



APPLICATION

The pendant light fitting type PLFM is intended for use in places with an explosive gas and dust atmosphere. The light fitting is designed for use in the industrial areas and facilities, indoor and outdoor spaces.
 Hazardous zones: 1, 2, 21, 22.

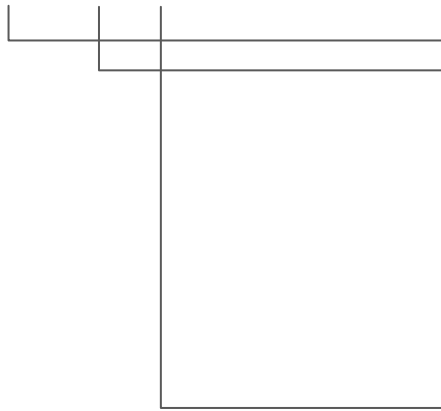
CONSTRUCTION

Housing: aluminium powder painted casting
 Diffuser: borosilicate glass
 Accessories: protected galvanized steel gird (INOX on request), assembly kit for wall, pipe and ceiling mounting

TECHNICAL DATA

| | |
|---|--|
| Certificate: | EXA 14 ATEX 0056X |
| Marking: | CE 0722 |
| Apparatus category: | II 2GD |
| Marking of explosion protection: | II 2G Ex d e IIC T6-T3 Gb II 2G Ex d IIC T6-T3 Gb II 2D Ex tb IIIC T80°C/T155°C Db |
| Ambient temperature: | -20°C ≤ Ta ≤ +40°C |
| Degree of protection: | IP 66 category 1 |
| Resistance to shock: | IK 08 |
| Protection class : | I (protective earthing) |
| Rated voltage: | -230 V (-10% / +6%) / 50 Hz - PLFM FLASH - . see selection table |
| Frequency: | 50Hz (60Hz on request) |
| Rated power: | See selection table |
| Cable entries: | two entries M20 |
| Connecting terminals: | L, N, PE; max. 2 x 2,5 mm ² solid, flexible terminal for external -PA connection; max 2x6 mm ² |
| Cable gland and plug: | one Ex d plug and one Ex d e adapter, type ADP 03/23, for cable φv 6-15 mm |
| Weight: | 3,5 kg → PLFM 100/., PLFM FLASH-. 4,5 kg → PLFM 20 LED-., PLFM 70 HSE-. |
| Packing: | The packing contains: 2 pcs 440x260x170 mm |

PLFM

**PLFM** ... - .**basic type code****maximal wattage and type of sources:**

- 100 - A incandescent lamp 100W max,
A ECO halogen lamp 105W max,
QT halogen lamp 100W max.
- 100/1 - LME mixed discharge lamp 100W max.
- 100/2 - TC-SB compact fluorescent lamp 23W max.
- 100/3 - LED BULB lamp 15W max.
- 20 LED - LED MODUL special 20W max.
- FLASH - XENON MODUL special 5W max.
- 70 HSE - HSE-I high pressure sodium discharge lamp 70W,
HSE-II high pressure sodium discharge lamp 50W.

Type of entries:

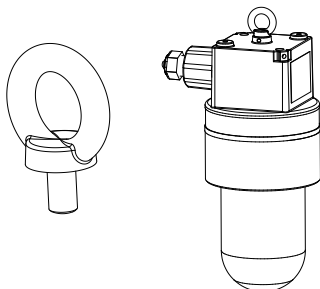
- 1 – indirect entry – type with Ex e junction box,
- 2 – indirect entry – type with Ex d adapter ADP 23/1,
- 3 – direct entry – type with Ex d cable gland.

MODEL CODE

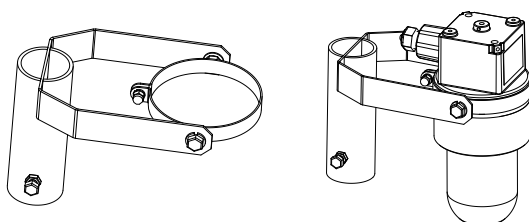
| Model code | Max. wattage | LBT marking | Nominal voltage | Luminous flux | Lamp holder | Temp. class (gas) | T ₀ MAX (dust) |
|-----------------|------------------------------|-------------|-----------------|----------------------------------|-------------|----------------------|---------------------------|
| | | | | | | T _a =40°C | T _a =40°C |
| PLFM 100 - . | 100 W | A | 230V | 1340 lm | E27 | T4 | 130°C |
| | 116 W Osram 105 W Philips | A ECO | 230 V | 2135 lm Osram 1980 lm Philips | E27 | T4 | 130°C |
| | 100 W | QT | 230 V | 1800 lm Osram | E27 | T4 | 130°C |
| PLFM 100/1 - . | 100 W | LME | 230 V, 50 Hz | 1100 lm | E27 | T3 | 155°C |
| PLFM 100/2 - . | 22 W Osram 23 W Philips | TC-SB | 230 V, 50 Hz | 1440 lm | E27 | T6 | 80°C |
| PLFM 100/3 - . | 12 W Osram 13 W Philips | LED | 230 V, 50 Hz | 810 lm Osram 1055 lm Philips | E27 | T6 | 80°C |
| PLFM 20 LED - . | 20 W | LED modul | 230 V, 50 Hz | 1300 lm | - | T6 | 80°C |
| PLFM FLASH - . | 5 W | XENON | 10-100 V DC | 4J/90Hz | - | T6 | 80°C |
| | | | 110 V AC | | | | |
| | | | 230 V AC | | | | |
| PLFM 70 HSE - . | 70 W | HSE | 230 V, 50 Hz | 5900 lm Osram 5600 lm Philips | E27 | T4 | 130°C |
| | 50W | HSE | 230 V, 50 Hz | 3600 lm Osram 3500 lm Osram | E27 | T4 | 130°C |

MOUNTING**Pendant, on pipe, wall, ceiling**

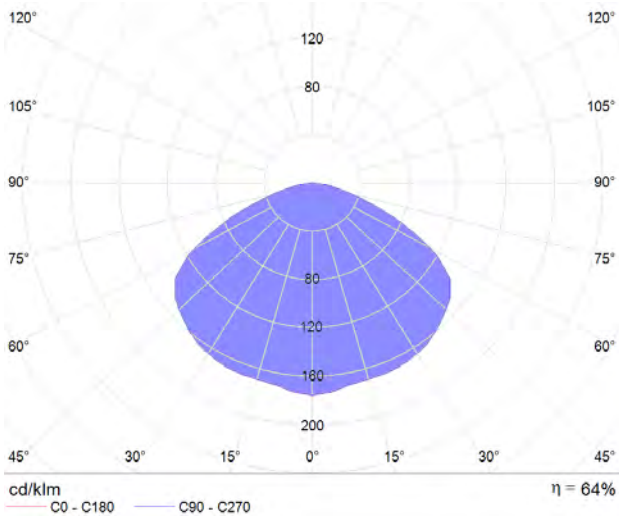
With vertical suspension on the bolt with ring bolt head M8
Wall mounting bracket



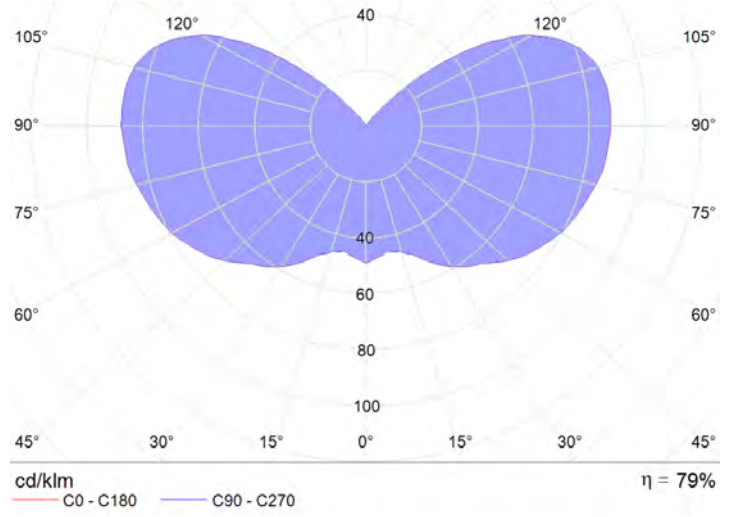
Mounting on the tube 2" and blocking it with two M10 screws



POLAR CURVE

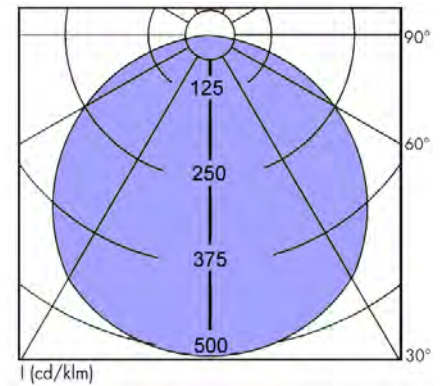
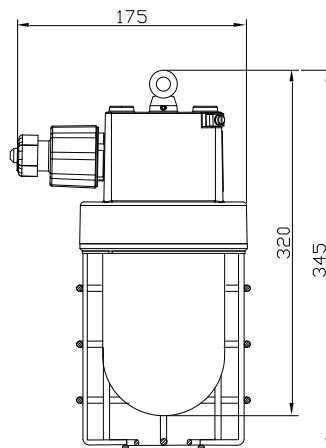
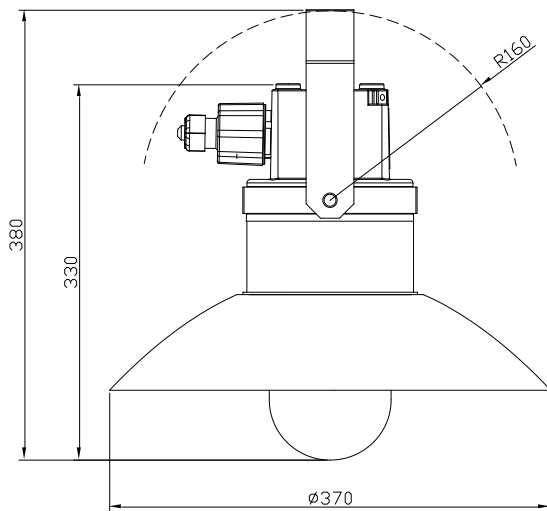


PLFM 100-., PLFM 70 HSE
With external reflector



PLFM 100-., PLFM 70 HSE
Without external reflector

DIMENSION DRAWING (all dimensions in mm)



PLFM 20 LED, 1300 lm

SPARE PARTS AND ACCESSORIES

| SKETCH | DESCRIPTION | CODE | SKETCH | DESCRIPTION | CODE |
|--------|------------------------------------|-------------|--------|--|-------------------------|
| | Replacement glass PLFM | PLFM 10-120 | | Ex e cable gland M25 | SPU 25 |
| | Wire guard PLFM | PLFM 10-130 | | Ex e plug M25, | SPC 25 |
| | Gasket PLFM | PLFM 10-140 | | Light bulb | According to type table |
| | Lampholder with internal reflector | PLFM 10-150 | | PLFM fixing bracket for tube R 2" | PLFM 20-120 |
| | Ballast set | PLFM 10-170 | | PLFM mounting bracket (ceiling mounting) | PLFM 20-130 |
| | Junction box ADP 23 | PLFM 20-110 | | PLFM mounting bracket (wall mounting) | PLFM 20-140 |

