

# Aspri 35N/45N Surface Horizontal

## Quiet-running multi-stage centrifugal pumps

### Applications

To work with clean water in domestic and industrial applications, irrigation, and hydropneumatic sets.

### Materials

Pump body and impellers in stainless steel AISI 304.  
Diffusers in technopolymer.  
Suction and discharge connections in cast iron.  
Mechanical seal in graphite and alumine.  
Built-in self priming valve.  
O-rings in EPDM and NBR.

### Aspri 35N:

Motor shaft in stainless steel AISI 420 and steel F-114.

Motor housing in aluminium L-2521.

### Aspri 45N:

Motor shaft in stainless steel AISI 420.

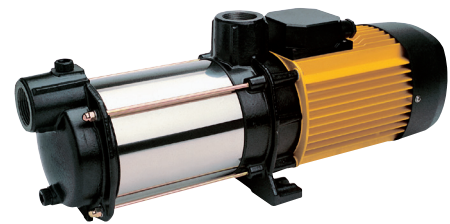
Motor housing in aluminium L-2521.

### Motor

Asynchronous, two poles.  
IP 44 protection.  
Class F insulation.  
Continuous operation.  
Efficiency IE2.

### Limitations

Maximum suction lift: 9 m.  
Maximum temperature of liquid: 40 °C.



## Hydraulic performance table

Model	I [A]			P1 [kW]		P2		c	l/min	20	40	60	80	100	120	140	150	1~230 V (model M)	3~400 V (model T)	
	1~230 V	3~230 V	3~400 V	1~230 V	3~400 V	[kW]	[HP]			[μF]	m <sup>3</sup> /h	1.2	2.4	3.6	4.8	6.0	7.2	8.4	9.0	Code
											mwc									
Aspri 35.3N	6.7	4.5	2.6	1.5	1.5	0.8	1	25	mwc	41	39	36	34	31	27	22	18	129699	129696	
Aspri 35.4N	8.4	5.3	3.1	1.8	1.8	1.1	1.5	25		54	51	48	44	39	33	27	23	129700	129697	
Aspri 35.5N	10.2	6.9	4	2.3	2.2	1.5	2	30		68	64	60	55	49	41	34	30	129701	129698	
Aspri 35.6N		8.3	4.8		2.7	2.2	3			81	78	74	67	60	52	42	37		130368	

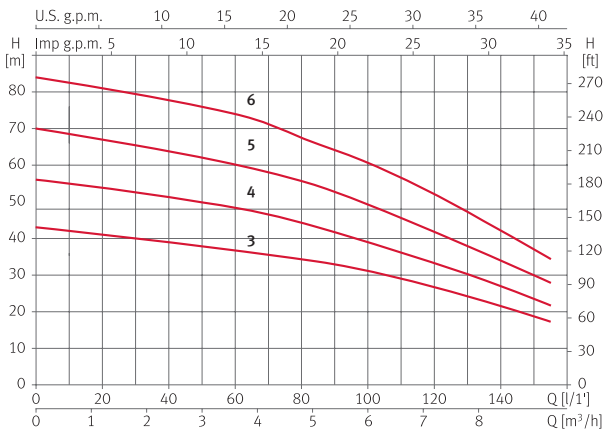
Model	I [A]			P1 [kW]		P2		c	l/min	20	40	60	80	100	120	140	150	1~230 V (model M)	3~400 V (model T)	
	1~230 V	3~230 V	3~400 V	1~230 V	3~400 V	[kW]	[HP]			[μF]	m <sup>3</sup> /h	1.2	2.4	3.6	4.8	6.0	7.2	8.4	9.0	Code
											mwc									
Aspri 45.3N	7.9	5.2	3	1.8	1.7	1.1	1.5	25	mwc	37	36	35	33	30	27	18	8	132087	132089	
Aspri 45.4N	10	6.9	4	2.2	2.2	1.5	2	30		48	47	45	42	39	36	24	11	132088	132090	
Aspri 45.5N		8.6	5		2.8	2	3			61	59	56	54	50	45	31	15		132091	

# Aspri 35N/45N Surface Horizontal

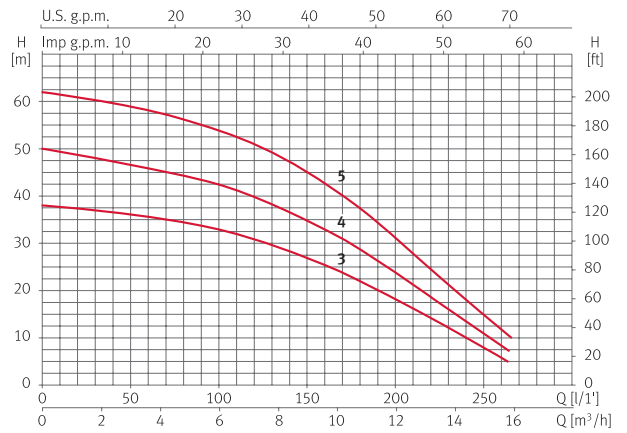


## Performance curves at 2900 rpm

Aspri 35N



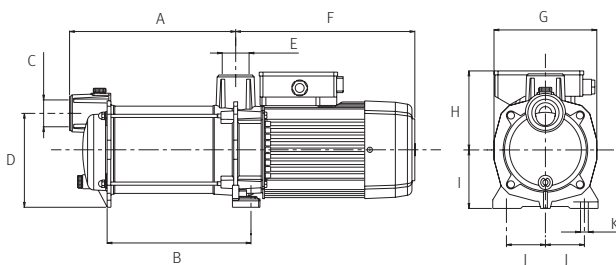
Aspri 45N



## Dimensions and weights

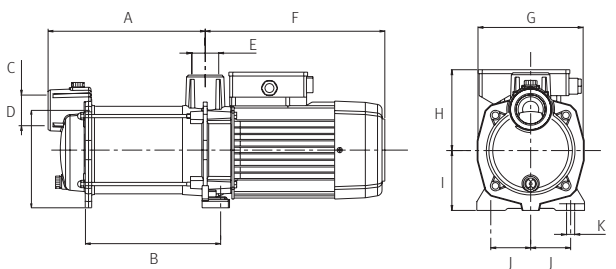
Aspri 35N

Model	A	B	C	D	E	F	G	H	I	J	K	Kg
Aspri 35 3	221.1	187.3	1 1/4"	147	1 1/4"	281.5	158	125.3	90	60	12	18.5/18.2
Aspri 35 4	246.6	211.8	1 1/4"	147	1 1/4"	281.5	158	125.3	90	60	12	20.5/18.6
Aspri 35 5	271.1	236.3	1 1/4"	147	1 1/4"	281.5	158	125.3	90	60	12	23.5/20.6
Aspri 35 6	295.6	260.8	1 1/4"	147	1 1/4"	281.5	158	125.3	90	60	12	23.7



Aspri 45N

Model	A	B	C	D	E	F	G	H	I	J	K	Kg
Aspri 45 3	245.9	211.6	1 1/2"	152	1 1/4"	281.5	158	125.3	90	60	12	22.6/18.6
Aspri 45 4	276.6	242.3	1 1/2"	152	1 1/4"	281.5	158	125.3	90	60	12	23.7/21.2
Aspri 45 5	307.3	273	1 1/2"	152	1 1/4"	281.5	158	125.3	90	60	12	25.3



\*Service kits are available on request

