



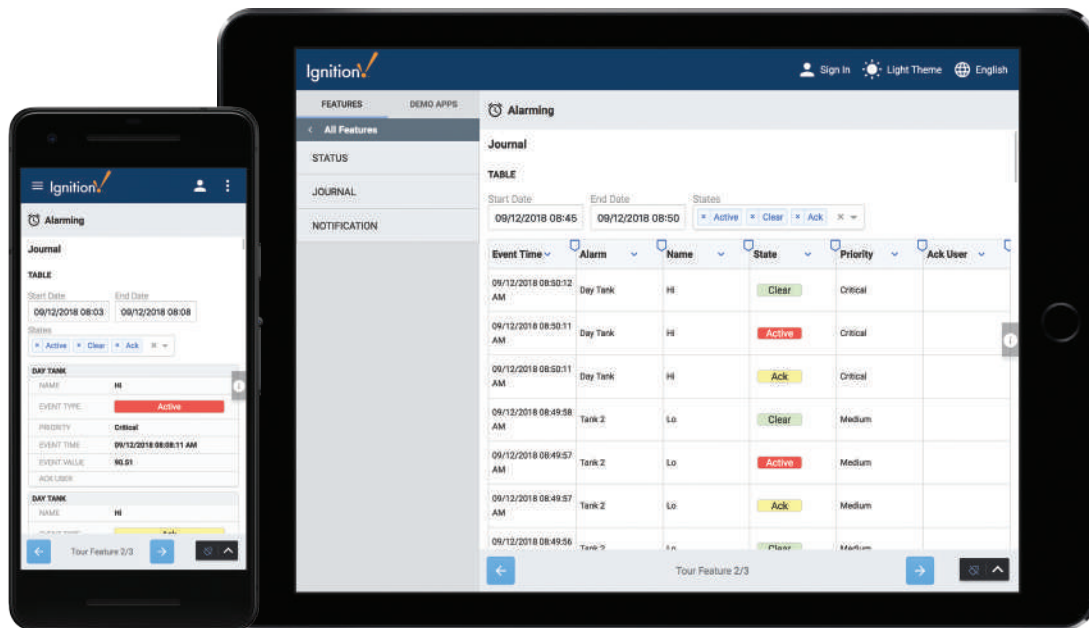
Ignition! Perspective Module

Product Data Sheet

Built for Mobile, Ready for the Field

Bring new levels of visualization and accessibility to your industrial processes with the Ignition Perspective Module. Easily build full-fledged, mobile industrial applications in HTML5 for the monitoring and control of your process directly from your mobile phone. Whether for SCADA, HMI, or another purpose, the applications you build in Perspective will look beautiful, and run natively in any major browser.

Features



Ignition Perspective Responds to You

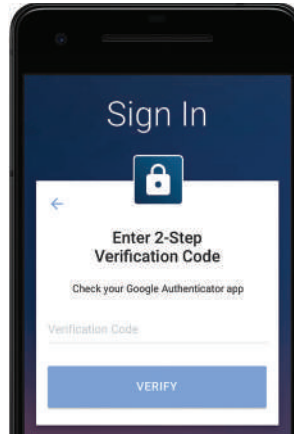
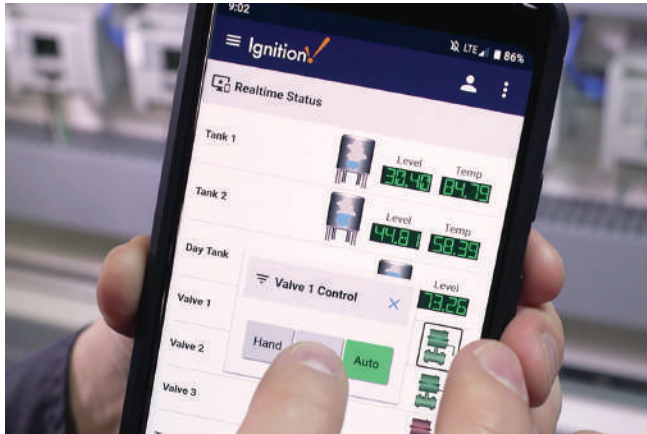
Ignition Perspective is totally mobile-responsive. It automatically adapts to fit screens of any size, giving you a personalized view into your unique processes, optimized for whatever device you're using.

Design for Any Size of Screens

Streamline your development process with robust design components and features that enable you to design for mobile, desktop, and display screens all at the same time. With new mobile-optimized container types, you can easily customize the user experience in the Ignition Designer with a simple selection.

Add the Magic of Mobile to Your Applications

Harness the full power of your mobile device's GPS, accelerometer, camera, barcode scanner, touch gestures, and other sensors to create the next generation of smart industrial applications. With Perspective, you can add the ability in your project to take photos of a faulty machine, easily scan a QR code into your SCADA system, tag readings in the field with GPS, pinch and zoom around a map of your site, and much more. Perspective unlocks the power of your mobile phone to open up a new world of possibilities for your industrial applications.



Real Control, With a Swipe

Ignition Perspective puts your plant operations at your fingertips. Visualize, monitor, and control systems with ease on your phone or tablet. See your whole system at a glance, and control your processes with intuitive touch commands. Experience complete, instantaneous plant-floor control with Perspective’s bi-directional data binding.

Unlimited Accessibility

Ignition Perspective runs on any device with a browser, including phones, tablets, laptops, desktops, and TV screens. Deployment has never been easier — you can deploy an unlimited number of Ignition Perspective clients from any location with a single click. You can even send secure web links to your application that anyone can view in a web browser. Perspective is compatible with Chrome, Firefox, Safari, and Microsoft Edge, fully HTML5 and CSS3 compliant, and does not require Java installation or plug-ins.

Secure Systems with Cutting-Edge Protocols

Ignition Perspective was built from the ground up with modern cybersecurity protocols at the forefront of development. It supports industry-leading encryption protocols, and is compatible with today’s federated identity infrastructure. Its new permissions model enables role-based security for complete system protection.

Easily Configure Components with Message Handling

Build robust systems with ease by leveraging message handling, a system that allows components to receive messages directly from one another. This makes it easier than ever to create strong, flexible, and complex connections between components, and requires less code. Python scripting engine. The Python scripting language is well-supported, powerful, and easy to learn and read, so your projects are easy to maintain.

Module Specs and Requirements

Requirements

Ignition
 Dual-core processor
 4 GB RAM
 10 GB free HD space
 (Requirements vary by usage)

Supported Operating Systems

Windows Server
 2008/2012/2016/2019
 Windows 7, 8, and 10
 macOS
 Ubuntu Linux (Supported by most popular distributions, tested with Ubuntu 14.04 or later)

Supported Databases

Microsoft® SQL Server
 Oracle
 IBM DB2
 MySQL
 MariaDB
 PostgreSQL
 Firebird
 Any database with a JDBC driver

Supported Browsers

Chrome
 Edge
 Firefox
 Safari