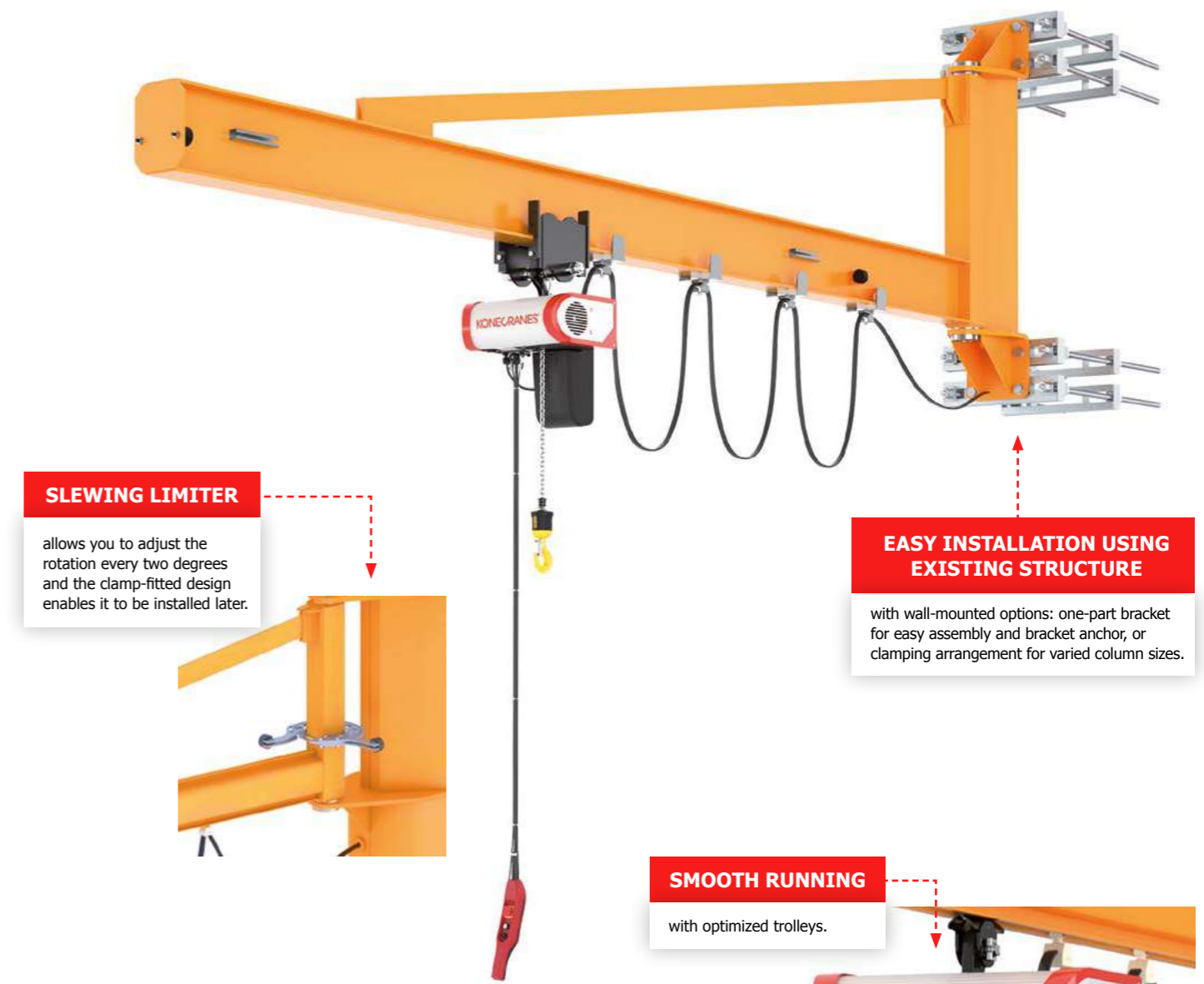
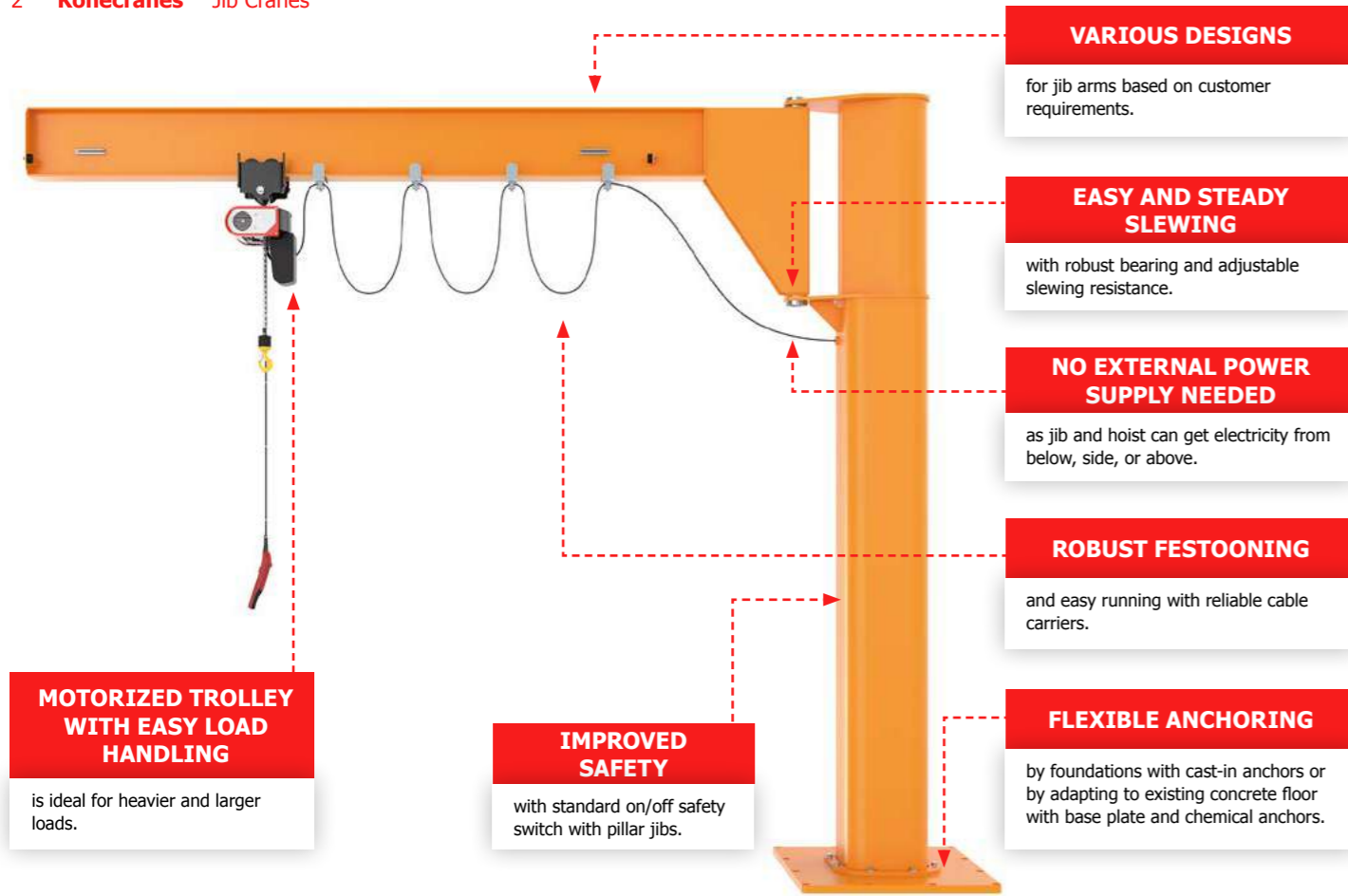


JIB CRANE

Fast and
precise
material
handling





Adapts to your facility

Konecranes jib cranes are suitable for almost any kind of workstation, from small workshops to big factory assembly lines, storage areas and loading bays. Whether you need to lift a single piece of equipment or add capacity to an entire process, a wide range of options provides solutions for most industrial facilities.

Imagine a jib crane with a load capacity of up to 2,000 kg and a slewing motion that can reach 300 degrees with a pillar jib. You have several different ways to fix the jib to the wall or the floor and can choose from a broad selection of hoist units, such as electric chain hoists and pneumatic lifting devices.

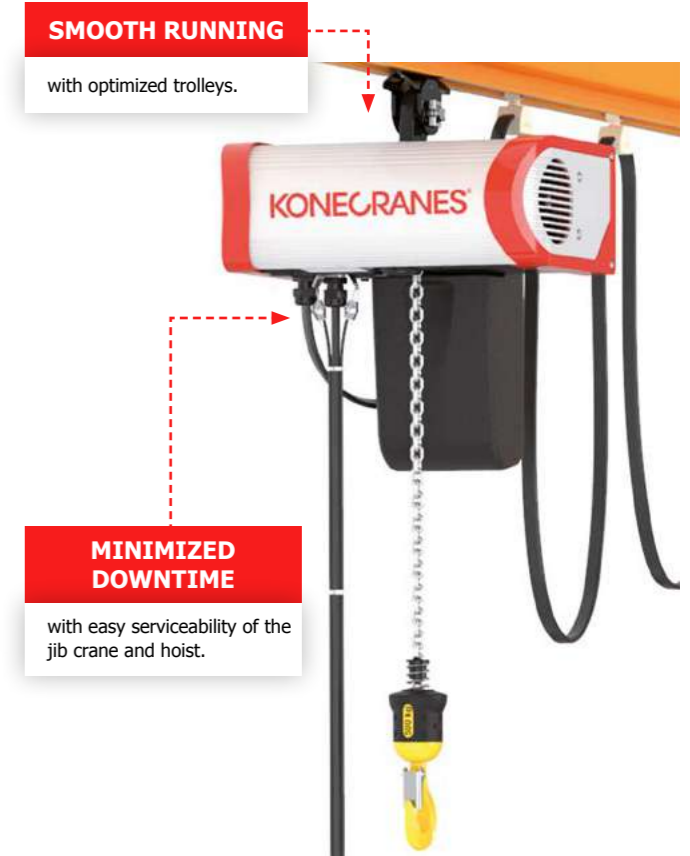
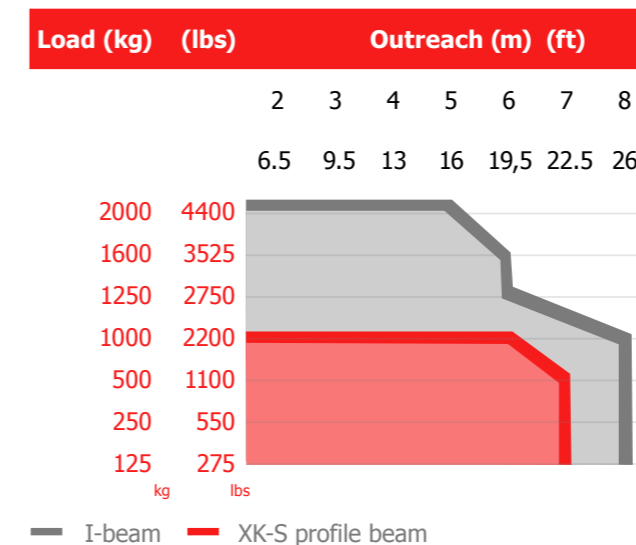
A longer lifecycle

Jib cranes are an integral part of any plant process and require both speed and accuracy. The flexibility and durability of this crane allow you to keep using it in other parts of your facility when your work environment changes. They are also easy to install and relocate, reducing the cost of your downtime, and giving your jib crane a long and productive lifecycle.


BENEFITS

- **Wide range of options provides solutions for most industrial facilities**
- **Easy installation and relocation reduce downtime**
- **Easy to use, jibs allow fast, safe and accurate load handling**
- **Advanced ergonomic design enhances the safety and comfort of your operators, maximizing work efficiency**
- **Easy serviceability and low maintenance keep your jib crane in full working order and your processes running**

Load and outreach



Konecranes is a world-leading group of Lifting Businesses™, serving a broad range of customers, including manufacturing and process industries, shipyards, ports and terminals. Konecranes provides productivity enhancing lifting solutions as well as services for lifting equipment of all makes. In 2017, Group sales totaled EUR 3,136 million. The Group has 16,200 employees at 600 locations in 50 countries. Konecranes shares are listed on the Nasdaq Helsinki (symbol: KCR).

© 2019 Konecranes. All rights reserved. 'Konecranes', 'Lifting Businesses' and  are either registered trademarks or trademarks of Konecranes.

This publication is for general informational purposes only. Konecranes reserves the right at any time, without notice, to alter or discontinue the products and/or specifications referenced herein. This publication creates no warranty on the part of Konecranes, express or implied, including but not limited to any implied warranty or merchantability or fitness for a particular purpose.



**EXPLORE MORE AND SEE DETAILED
PRODUCT INFORMATION.**

bit.ly/KC-Jib-cranes

