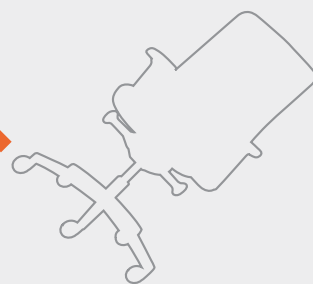
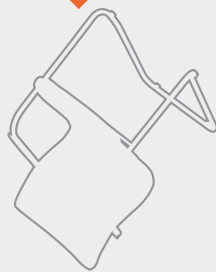
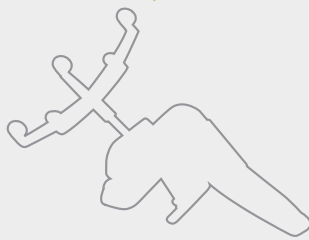


Rim[®]



PRODUCTS

/ 2015 - 2016

office sitting furniture

FLEXI

Executive



STF / FX 1101.088.029



STF / FX 1111.088.029



SELF / FX 1102.099



SELF / FX 1112.099

FLEXI

Project



ST1 / FX 1104.083



ST1 / FX 1114.083



SELF / FX 1106.082



SELF / FX 1116.083



ST1 / FX 1104.083

FLEXI

Conference



FX 1161



SW2 / FX 1162



SW2 / FX 1163



FX 1161



SW2 / FX 1162

JET



STE+ / JT 710.088.013



STE+ / JT 710.088.013



STE+ / JT 710



STE+ / JT 711.088

FLASH



STE / FL 741.088.014



FL 750 E



FL 760 E



STE / FL 742.099



FL 752

FUTURA
Head



ST II / FU 660A.088.019 **ST II / FU 660A.088** **ST II / FU 661A.088** **SW+ / FU 662A.093**

FUTURA



STII / FU 650A.088.015 **STII / FU 651A.091** **FU 654A**  **FU 655A** 

FOCUS
Executive



STF / FO 640A.088.025 **FO 646**  **STF / FO 640A.091** **FO 645** 



FOCUS



ST1 / FO 642B.083.024 **FO 647E**  **FO 649E**  **ST / FO 641E.082**



ANATOM



STF / AT 987A.088.027 **SELF / AT 988.099** **ST1 / AT 985A.083** **ST / AT 986A.082** **AT 983** 



ACTIVE



ST1 / AC 954A.099.027



ST / AC 955A.083



ST / AC 955A.083

NET



STE / NT 675.088.028



ST1 / NT 676A.083



NT 682



NT 681



NT 685.044

EASY PRO



ST1 / EP 1204.083



SELF / EP 1206.082



EP 1222



EP 1224

WORK



STII / FU 3121.088



STII / FU 3121.088



PC / WK 3151



PC / WK 3151

HOCKER



SW+ / HO 4501



SW+ / HO 4501

KVADRATO



SW+ / KV 151



SW+ / KV 152.045



SW+ / KV 153.045



KV 1120



KV 131



KV 132



KV 133.045



KV 142



KV 143.045

REWIND



RW 2101



RW 2102.043



RW 2103



RW 2107



RW 2108.043

RONDO



RO 941



RO 942.044



RO 943



RO 952.044



RO 953

WEB



WB 950.000.095



WB 950.001



WB 950.002



WB 950.010



WB 950.011



WB 950.100



WB 950.101



WB 950.102



WB 950.110



WB 950.111



WB 950.300



WB 950.301



WB 950.302



WB XXX

LETTY



LT 161



LT 162



LT 163



LT 164



120



LT 169



LT 166



LT 167



LT 168



LT 864

SITTY



SI 4101

SI 4102

SI 4103

SI 4104

SI 4101.002



SI 4111

SI 4112

SI 4113

SI 4114

COMFY



CF 127

CF 127

CF 128

CF 128

CF 127.001.012

POPPY



ER / PP 230

PP 231

PP 232

PP 233

PP 6420

POPPY

Bar



PP 238

PP 239

PP 237

PP 251

PP 252

ADJUST



AD 5450



AD 5460

UNION



UN 801A



UN 802A

MULTI



MU 420



MU 420

CLAP



CP 0410



CP 0410

TIP-UP



TU 890.01



TU 890.01



TU 890.02

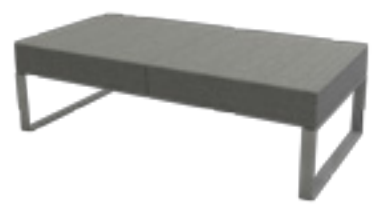


TU 890.02

MODULAR



MO 5031



MO 5032



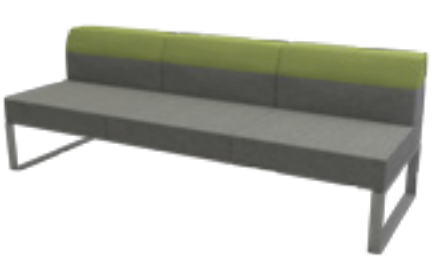
MO 5033



MO 5041



MO 5042



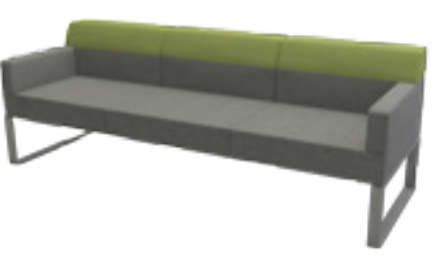
MO 5043



MO 5041.030



MO 5042.030



MO 5043.030



MO 5041.021



MO 061



MO 5421



MO 5422



MO 5051.030



MO 5052.030



MO 5053.30

VARIO 2



VA 465



VA 466



VA 467



VA 468



VA 470

ALETA



AL 831



AL 832



AL 833



AL 803

BRISK



BS 431



BS 432



BS 433



BS 410

KIVOS



KI 5101



KI 5101

CLUB



CB 311 N

CB 321 N

CB 312 N

CB 322 N

IRIS



IR 856.01

IR 856.02

IR 855.01

IR 855.01

IR 855.02

TANIA



TA 861.01

TA 861.02

TA 860.01

TA 860.02

TA 860.05

LOLA



LO 5001.010

LO 5005.010

LO 5002.010

LO 5410

PANEL

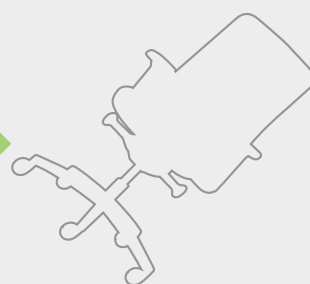
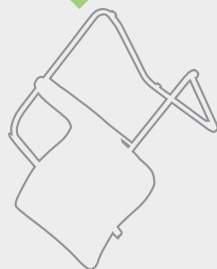


PA 5701

PA 5702



FAN



PRODUCTS

/ 2015 - 2016

office sitting furniture

ALLEGRO



ER / AG 695A



ER / AG 696A



AG 697N

ADAPT



ST1 / AD 971A.083.026



ST1 / AD 971A.083



ST2 / AD 973A.082

LINE



ST2 / LN 7301.083.027



ST2 / LN 7301.083.027



ST2 / LN 7301.083



ST2 / LN 7301

ZET+



ST2 / ZE 920.083.027



ST3 / ZE 919.082



ST3 / ZE 916A.082



PC / ZE 915.073

SKILL+



ST3 / SK 965.082



ST3 / SK 965.082

SPRING



SP 2141.061 




SP 2141 



SP 2151.061 



SP 2151 

ECONOMY



EM 554 



EM 564 



EM 564.031 



EM 550 



EM 560 




EM 570.031 



EM 5520

PULL



PU 243 




PU 244 

WOODY




WO 226 




WO 227 



WO 228 



WO 229 

SONJA



SO 875.01



SO 875.02



SO 875.01

MOVE



MV 7761



MV 7762



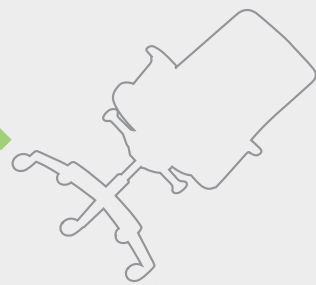
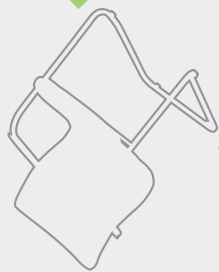
SYMPOZIUM



KS 361.02



KS 361.01



FABRICS

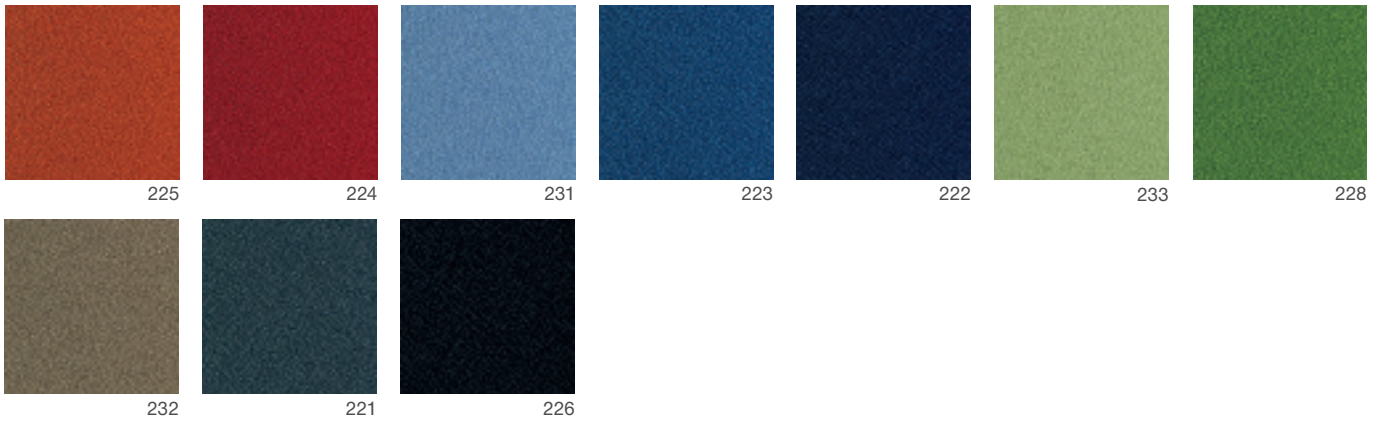
/ 2015 - 2016

office sitting furniture

P/BONDAI



100% Polyester / Flammability BS 476 Part 7 Class 1
Abrasion resistance 100.000 Martindale



A/ADVANTAGE

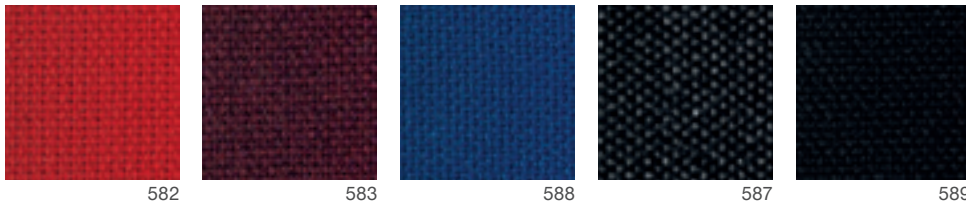


30% wool, 70% polyester / Abrasion resistance 90.000 Martindale
Flammability EN 1021 - 1 : 2006, EN 1021 - 2 : 2006,
BS 7176 : 1995 low hazard



5

YEAR GUARANTEE



A/PHOENIX

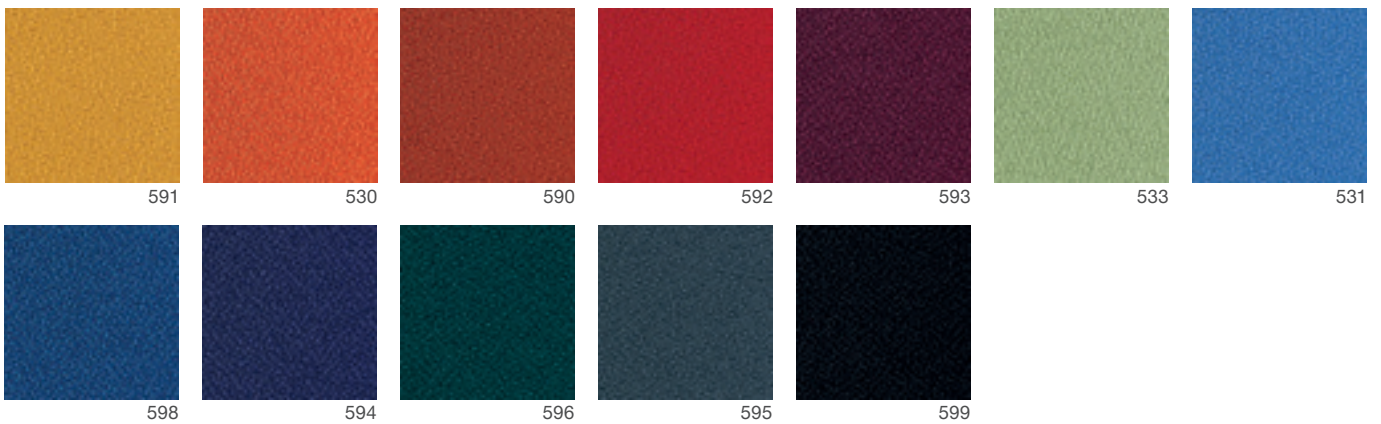


100% polyester / Abrasion resistance 100.000 Martindale
Flammability EN 1021 - 1 : 2006, EN 1021 - 2 : 2006, BS 7176 : 1995 low hazard



5

YEAR GUARANTEE



B/URBAN PLUS

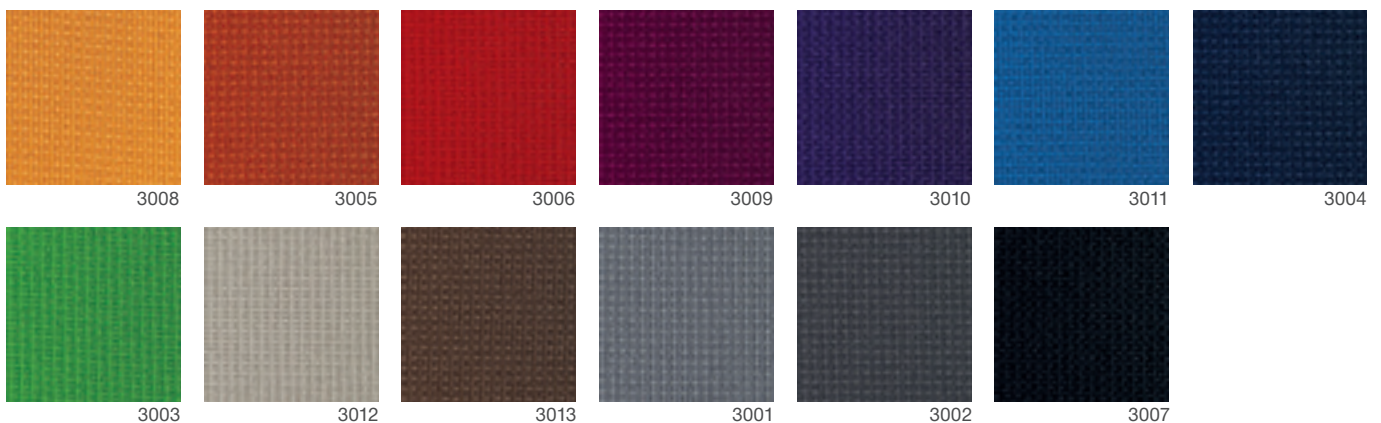


100% Xtreme FR / Abrasion resistance 90.000 Martindale
Flammability EN 1021 - 1 : 2006, EN 1021 - 2 : 2006,
BS 7176 : 1995 low hazard, BS 7176 : 1995 medium hazard



5

YEAR GUARANTEE





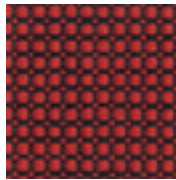
5
YEAR GUARANTEE



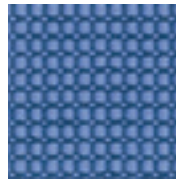
100% polyester Trevira CS / Abrasion resistance
100.000 Martindale / Flammability EN 1021/1 - 2,
BS 7176 : 1995 medium hazard



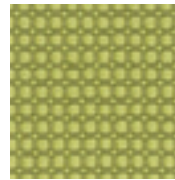
RELAX BICO/B



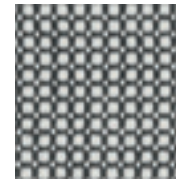
3031



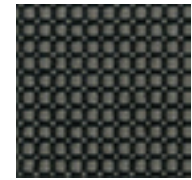
3033



3034



3037



3035



5
YEAR GUARANTEE

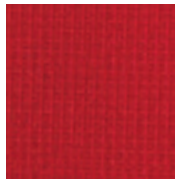
95% wool, 5% polyamide / Abrasion resistance 200.000 Martindale
Flammability EN 1021 p1&2, BS 5852, scrib 5



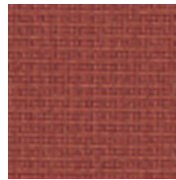
FAME/C



4150



4151



4170



4153



4169



4154



4155



4168



4166



4159



5
YEAR GUARANTEE



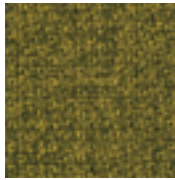
100% Trevira CS / Abrasion resistance 100.000 Martindale
Flammability EN 1021 1&2, BS 5852, Scrib 5,
BS 7176 medium hazard



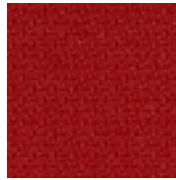
STEP/C



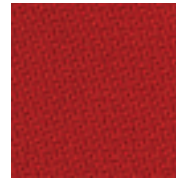
4207



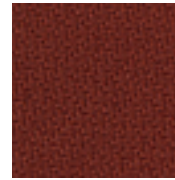
4208



4217



4209



4205



4206



4210



4213



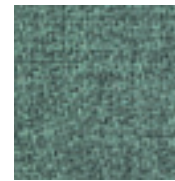
4214



4211



4212



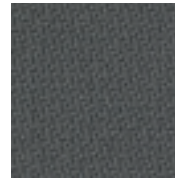
4215



4204



4216



4202



4203

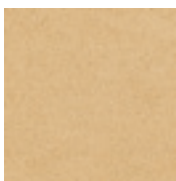


4201

80% polyester, 20% cotton / Abrasion resistance 50.000 Martindale



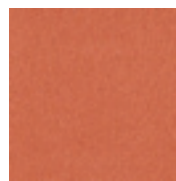
ARCA/C



4063



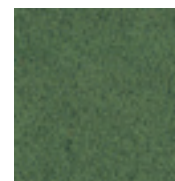
4060



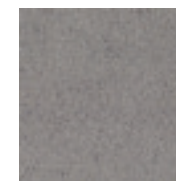
4066



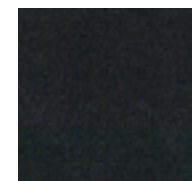
4061



4064



4062



4067

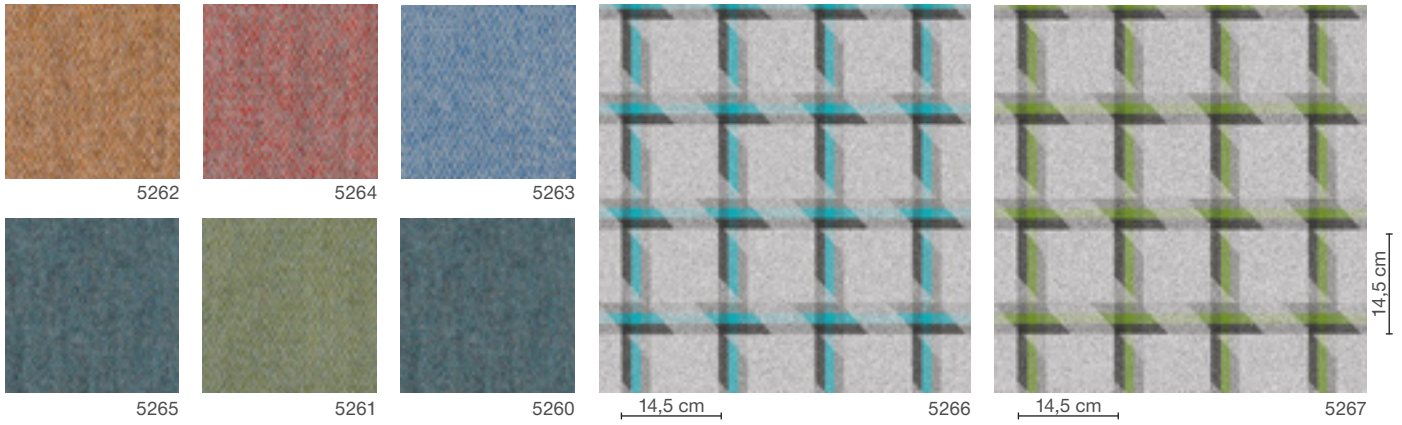
D/LANDSCAPE COLLECTION



100% Wool, 5% Polyamide / Abrasion Resistance 60.000
Flammability BS 1021 - 1:2006, BS EN 1021 - 2:2006,
BS 7176 : 2007 Low Hazard



5
YEAR GUARANTEE



D/BLAZER



100% wool / Abrasion resistance 50.000 Martindale
Flammability EN 1021 - 1 : 2006, EN 1021 - 2 : 2006, BS 7176 : 2007
low hazard, BS 7176 : 2007 medium hazard



5
YEAR GUARANTEE



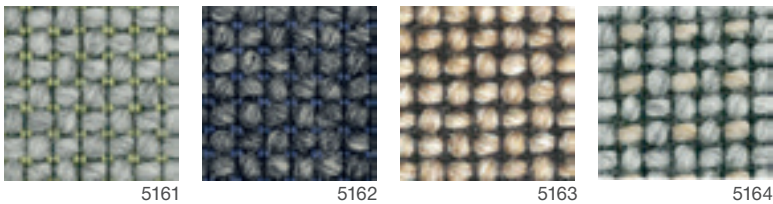
D/CRAGGAN



97% pure new wool, 3% FR viscose / Abrasion resistance 50.000
Martindale / Flammability BS EN 1021 - 1 : 2006, BS EN 1021 - 2 : 2006,
BS EN 7176 : 2007 low hazard, BS 5852 : 2006 section 4 ignition
source 5, BS 7176 : 2007 medium hazard



5
YEAR GUARANTEE

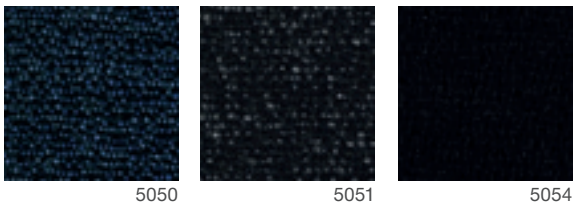


D/24/7+



50% polyamid, 33% wool, 10% visil, 7% viscose
Abrasion resistance 50.000 Martindale / Flammability EN 1021 - 1 : 2006,
EN 1021 - 2 : 2006, BS 7176 : 2007 medium hazard

10
YEAR GUARANTEE

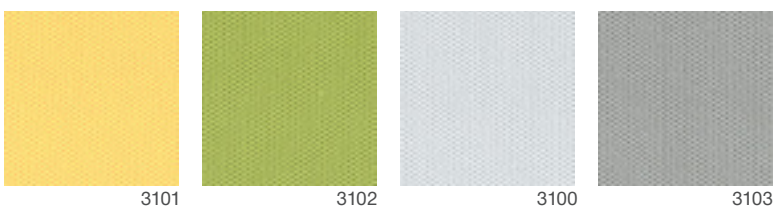


D/RACER



100% polyester / Flammability BS 476 Part 7 Class 1
BS EN 13501-1 Adhered B,s2,d0 / BS EN 13501-1 Un-adhered B, s1,d0

5
YEAR GUARANTEE





5

YEAR GUARANTEE



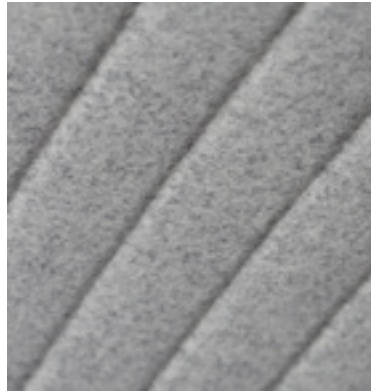
100% Wool / Abrasion Resistance 50.000
Flamibility BS 1021 - 1:2006, BS EN 1021 - 2:2006,
BS 7176 : 2007 Low Hazard



BLAZER QUILT CHANNEL/D



5240



5242



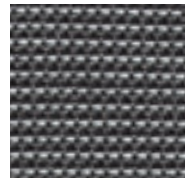
5241

Rim®

Z+N 100% polyester
Abrasion resistance 150.000 Martindale

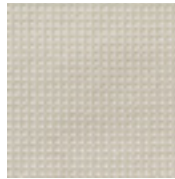


MESH

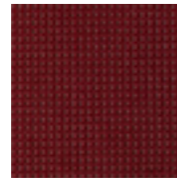


Z+N 481

K+R / 97% polyester, 2% polyamid, 1% elasthan
Abrasion resistance 30.000 Martindale



K+R 424



K+R 426



K+R 425



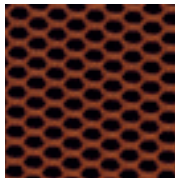
K+R 410



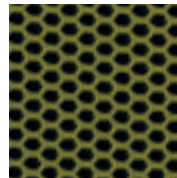
10

YEAR GUARANTEE

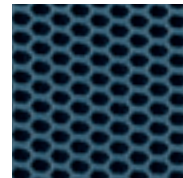
OMEGA / 100% polyester
Abrasion resistance, 100.000 Martindale



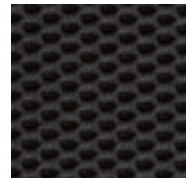
omega 471



omega 472

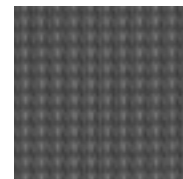


omega 473

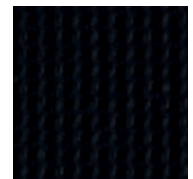


omega 474

GOAL / 55% polyester, 45%polyamid
Abrasion resistance 100.000 Martindale



goal 407



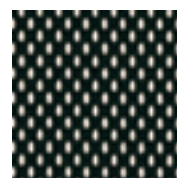
goal 401

FAN

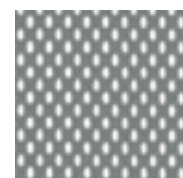
POLO / 100% polyester
Abrasion resistance, 100.000 Martindale



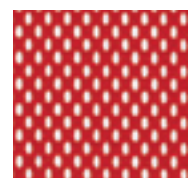
MESH



polo 451



polo 455

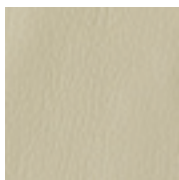


polo 456

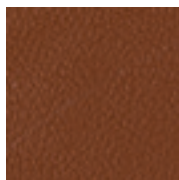
PRINCE/leather



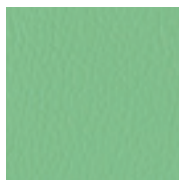
58



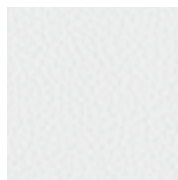
254



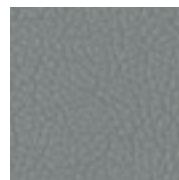
253



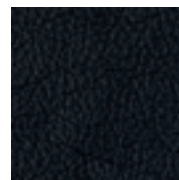
255



59

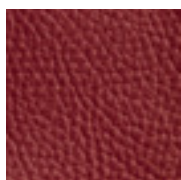


250

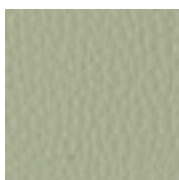


52

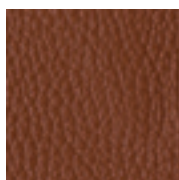
FLORIDA/leather



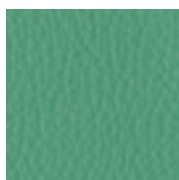
8061



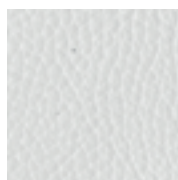
8057



8055



8060



8059



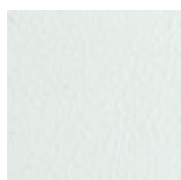
8056



8052

AMALFI/A

13,85% PES, 86,15% PVC / Abrasion resistance
55.000 Martindale / Flammability EN 1021 - 1, EN 1021 - 2



1501



1502



1503



1516



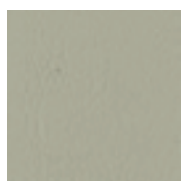
1506



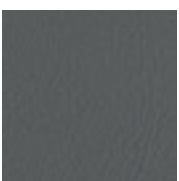
1514



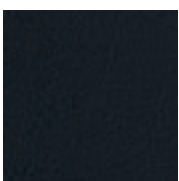
1512



1510

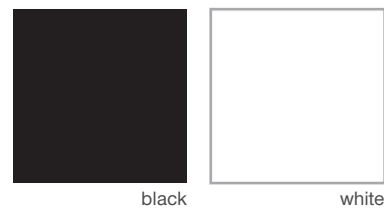


1505



1508

LAMINATE



black

white

TABLE TOPS



black
Kronospan 190 PE

grey
Kronospan 1700 PE

white
Kronospan 101 PR

beech light
Kronospan 876 PR

natural light
Ferrara Oak
EGGER H1334 ST9

natural Dijon Walnut
EGGER H3734 PR9

-
-  Kancelářské židle / Drehstühle / Swivel chairs
 -  Konferenční židle / Konferenzstühle / Conference
 -  Sedačky / Warten-Empfangen / Waiting-Reception
 -  Panely / Stellwände / Panels

CZ Barevná přesnost může být zaručena pouze dle originálních vzorků látek a dekorů. Barevné vzory látek a dekorů použité v tomto vzorníku jsou tištěné reprodukce, které se mohou lišit od originálních barev a nejsou proto důvodem k reklamaci.

D Farbverbindlichkeit kann nur bei Originalmustern gewährleistet werden. Farbabweichungen zum originale Bezugsstoff sind drucktechnisch bedingt und bieten keinen Anlass zu Reklamationen.

GB Colour accuracy can be guaranteed only when original samples. Differences in colour compared to the original fabrics are unavoidable in printed catalogues and do not constitute grounds for complaint.

Rim®



www.rim.cz