

Rim®



PRODUCTS

Office Sitting Furniture

2015 / 2016



6 FLEXI EXECUTIVE

8 FLEXI PROJEKT

10 FLEXI CONFERENCE

12 JET

16 FLASH

22 FUTURA HEAD

24 FUTURA

26 FOCUS EXECUTIVE

28 FOCUS

30 ANATOM PLUS



32 ANATOM / ACTIVE

36 NET

40 EASY PRO

42 RONDO

44 KVADRATO

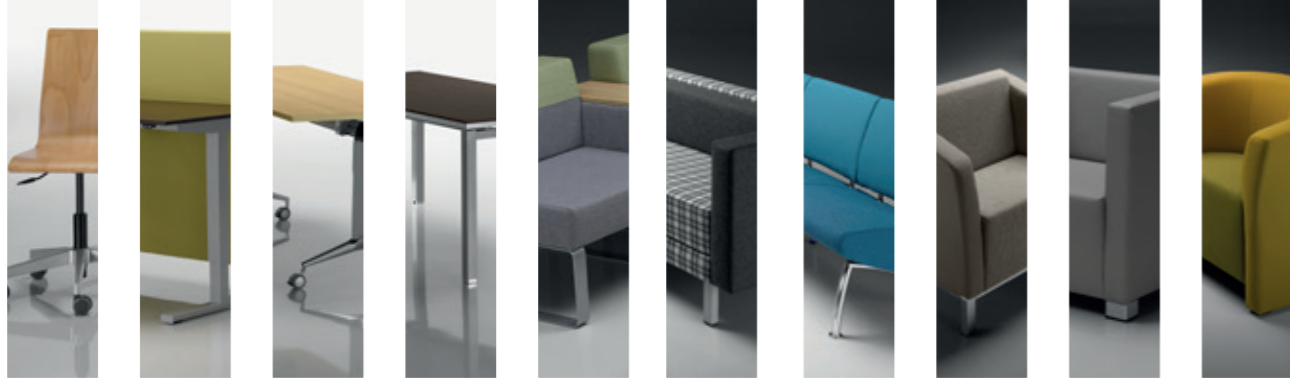
50 REWIND

52 WEB

56 LETTY

58 SITTY

60 COMFY / POPPY



62 POPPY

66 TABLES

68 MULTI

70 UNION / CLAP

72 MODULAR

74 VARIO2

78 ALETA

80 BRISK

82 KIVOS

84 CLUB



88 IRIS

90 TANIA

92 LOLA

94 Materials





FLEXI EXECUTIVE



STF FX 1111.088.029



STF FX 1101.088.029



SELF FX 1112.099



SELF FX 1102.099

FLEXI PROJECT



ST1 FX 1114.083.029



ST1 FX 1104.083.029



SELF FX 1116.082



SELF FX 1106.083

FLEXI CONFERENCE



SW2 FX 1162



SW2 FX 1163



SW2 FX 1163



FX 1161



STE+ JT 710.088.018.013



STE+ JT 710



STE+ JT 711.099



STE+ JT 711.099





STE FL 741.088.014



FL 760E



FL 750E



STE FL 741.088



STE FL 742.099



FL 752



FL 762



FUTURA HEAD



SW+ FU 662A.093



STII FU 661A.088



STII FU 660A.088.019



STII FU 660A.088



STII FU 650A.088.015



FU 654A



FU 655A



STII FU 651A.091

FOCUS EXECUTIVE



STF FO 640A.091/design 1



FO 646/design 1



FO 646/design 2



STF FO 640A.088.025/design 2



ST1 FO 642B.083.024

FO 647E

FO 649E

ST FO 641E.082

ANATOM PLUS



STF AT 987A.088.027



STF AT 987A.088



AT 983



SELF AT 988.099

ANATOM

ACTIVE



ST1 AT 985A.083

ST AT 986A.082

ST1 AC 954A.099.027

ST AC 955A.083





STE NT 675.088.028



STE NT 675.088



NT 682.044



NT 685.044



ST1 NT 676A.083



ST1 NT 676A.083



NT 681



NT 682

EASY PRO



ST1 EP 1204.083



SELF EP 1206.082



EP 1222.043



EP 1224.043

RONDO



RO 953.044



RO 952



RO 941



RO 942.044



RO 951.044

KVADRATO



KV 132

KV 133.045

KV 1120

KV 131

SW+ KV 151

SW+ KV 153.045



KV 142



KV 143.045



KV 141



KV 141.045



REWIND



RW 2108.043

RW 2107

RW 2106

RW 2101

RW 2102.043

RW 2103



WB 950.111

WB 950.002

WB 950.100

WB 950.000

WB 950.300

WB 950.302

WB 950.000.095





LT 164



LT 163.066



LT 162



LT 161



LT 166



LT 161.065.067



SI 4113

SI 4104

SI 4112



SI 4101

SI 4102

SI 4111

COMFY

POPPY



CF 128

CF 127

CF 127.001.012



PP 231

PP 233

PP 231



ER PP 230



PP 6430



PP 231 + 120



PP 231



PP 252

TABLE/TA 862.02

PP 252



PP 237

TABLE/TU 890.02

PP 237

TABLES



SW2 HO 4501

TABLE/AD 5450

PA 5701

PA 5701

TABLE/AD 5460

PC WK 3151



TABLE/MU 420



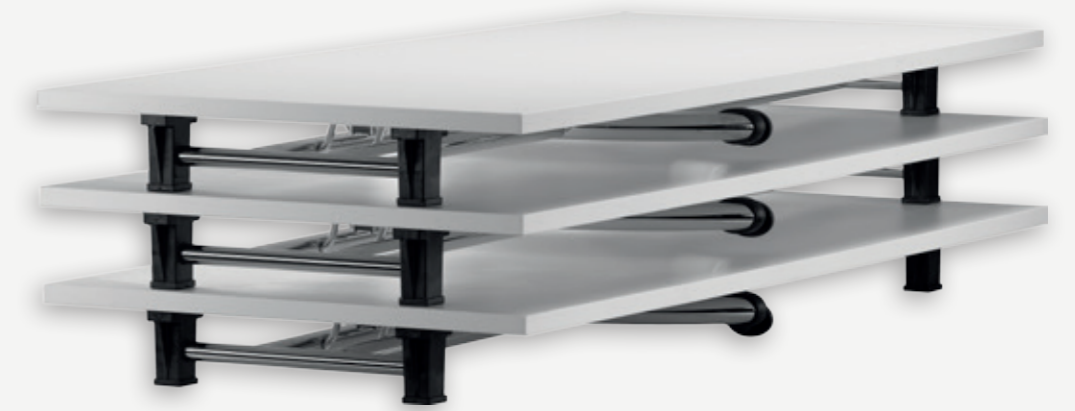
TABLE/MU 420

UNION



TABLE/UN 802A

CLAP



TABLE/CP 0411

MODULAR



MO 5041

TABLE/MO 5427

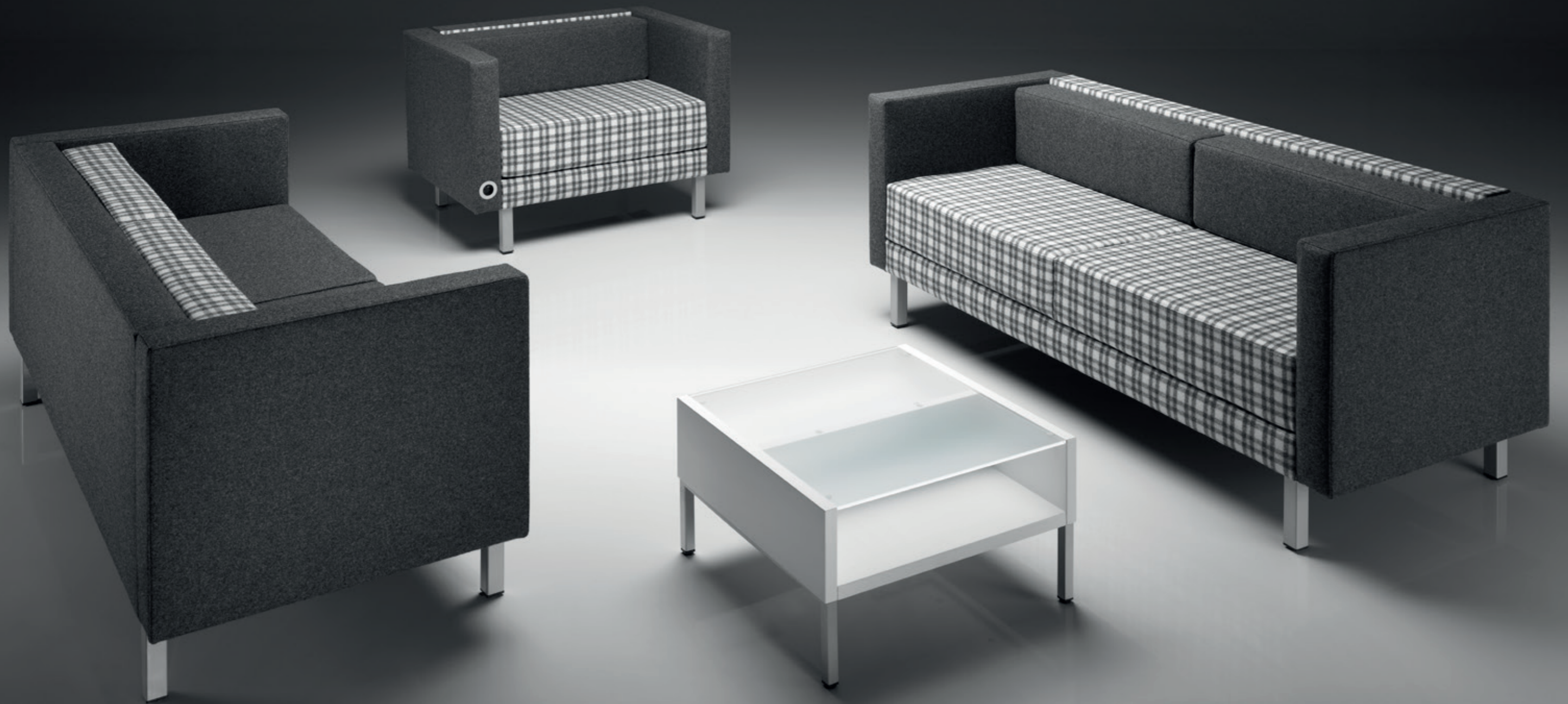
MO 5041.021

TABLE/MO 5423

MO 5042

TABLE/MO 5421

MO 5031



VA 466

VA 465

TABLE/VA 470

VA 466



VA 467

VA 468

TABLE/VA 470

VA 467



AL 832

AL 831

TABLE/AL 803

AL 833

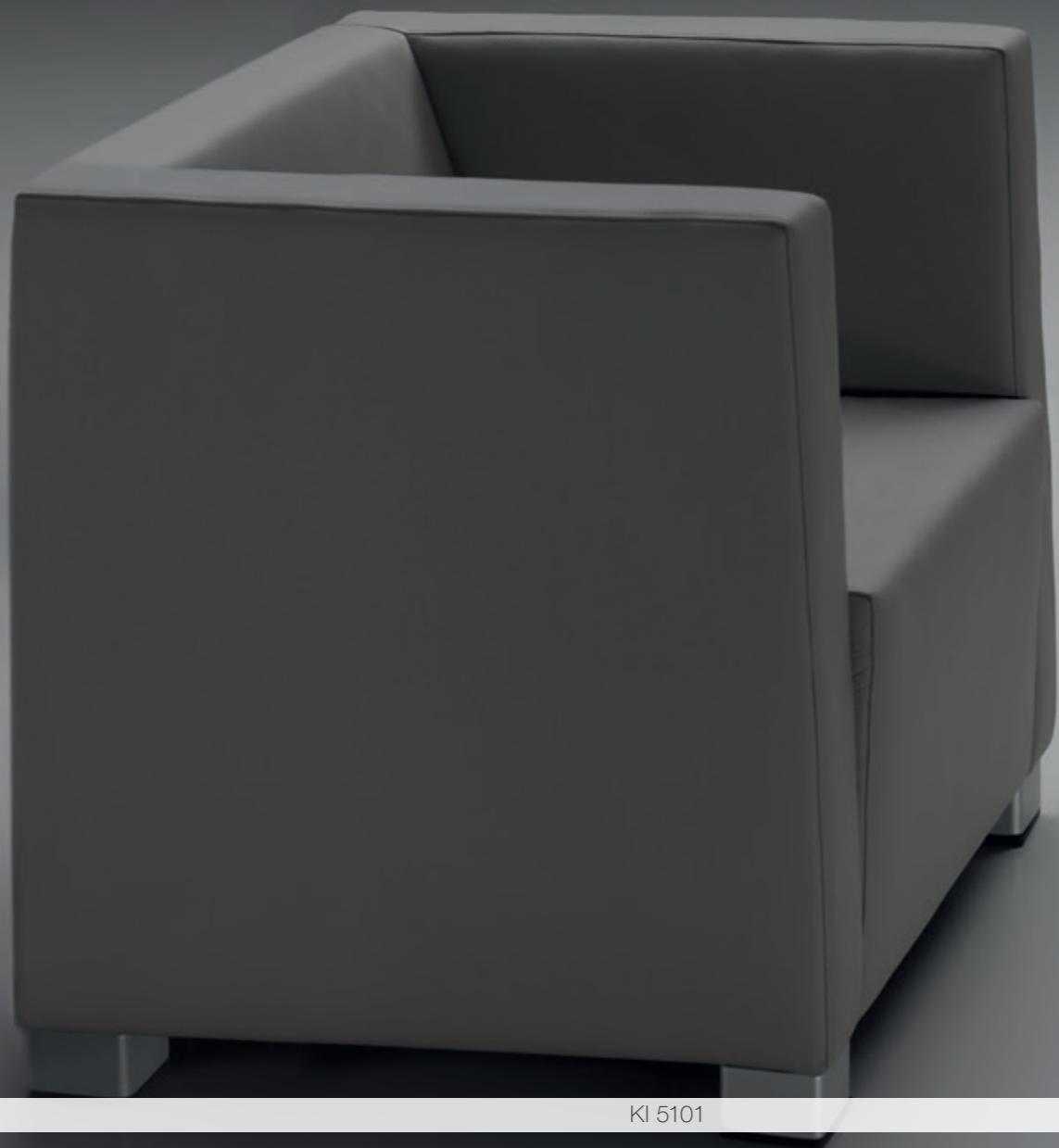


BS 431

BS 432

TABLE/BS 410

BS 433



KI 5101



KI 5101



CB 322 N

CB 312 N



CB 321 N

CB 311 N





IR 855.02



TABLE/IR 856.02



IR 855.02



IR 855.01



TA 860.01



TABLE/TA 861.02



TA 860.05



TA 860.02



LO 5002.010



LO 5005.010

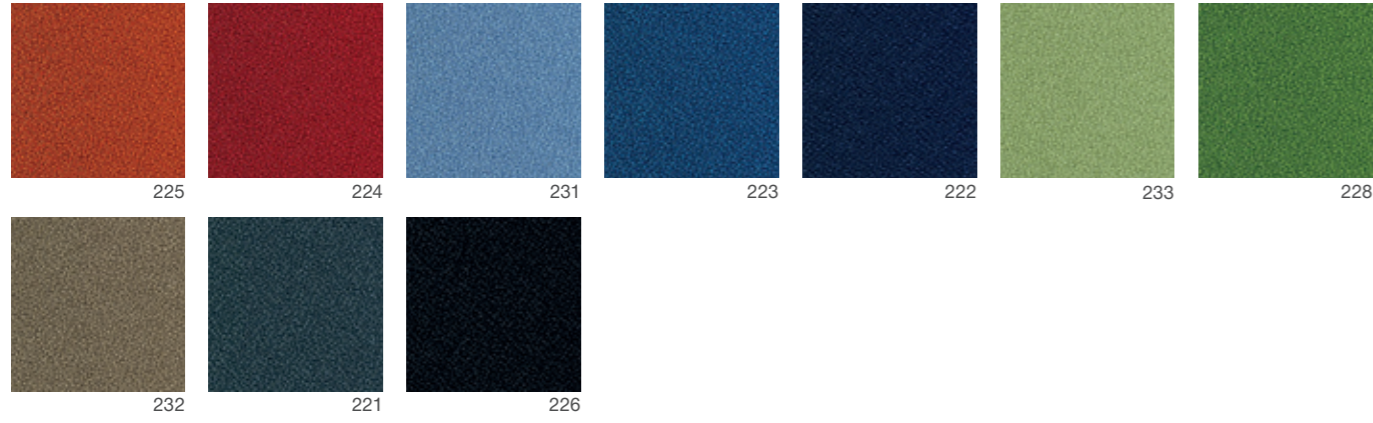


LO 5001.010

P/BONDAI



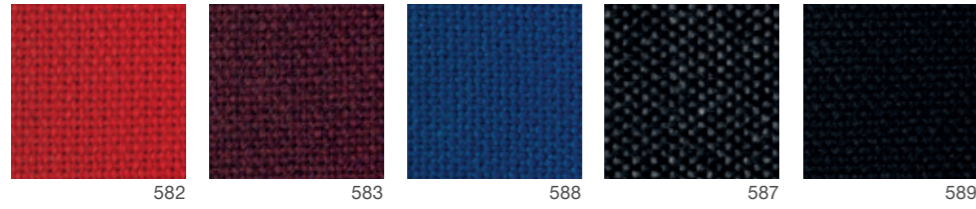
100% polyester / Abrasion resistance 100.000 Martindale
Flammability EN 1021/1 - 2, BS 7176 : 1995 medium hazard



A/ADVANTAGE



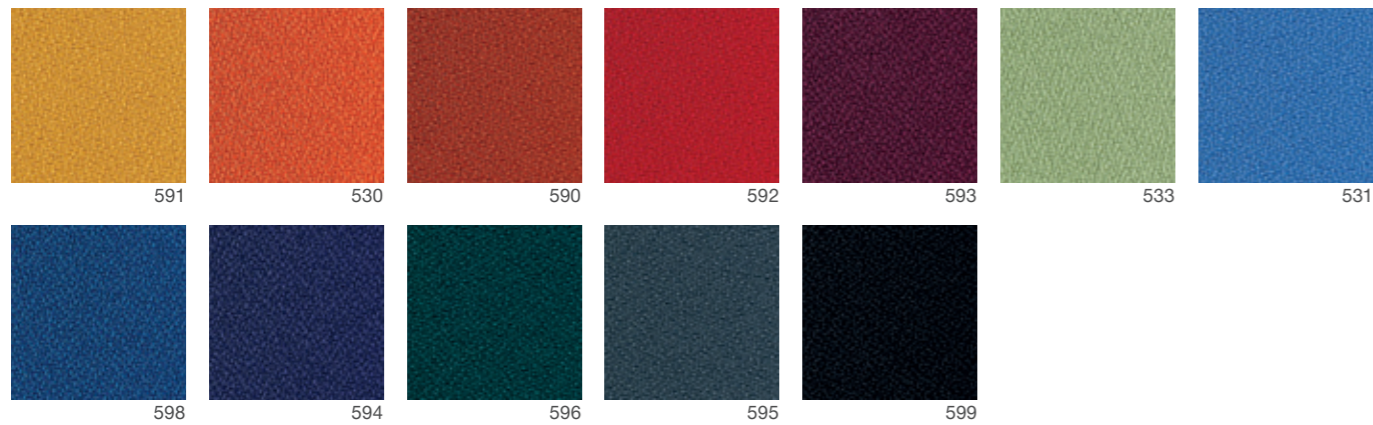
30% wool, 70% polyester / Abrasion resistance 90.000 Martindale
Flammability EN 1021 - 1 : 2006, EN 1021 - 2 : 2006,
BS 7176 : 1995 low hazard



A/PHOENIX



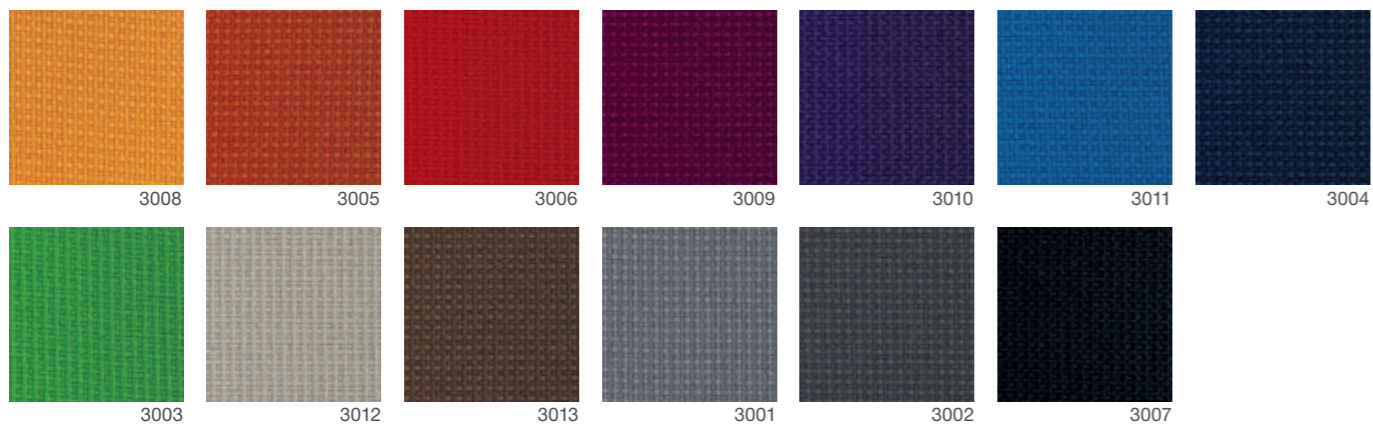
100% polyester / Abrasion resistance 100.000 Martindale
Flammability EN 1021 - 1 : 2006, EN 1021 - 2 : 2006, BS 7176 : 1995 low hazard



B/URBAN PLUS



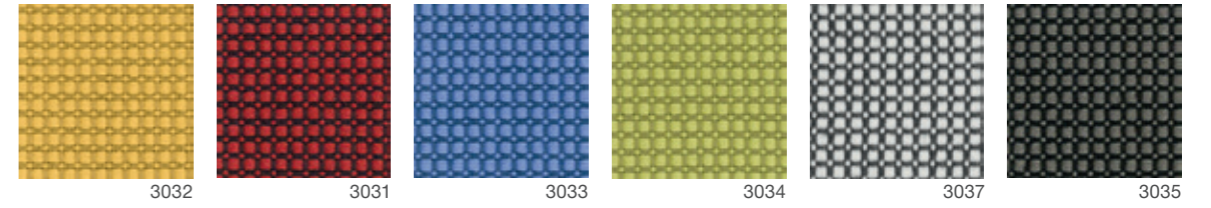
100% Xtreme FR / Abrasion resistance 90.000 Martindale
Flammability EN 1021 - 1 : 2006, EN 1021 - 2 : 2006,
BS 7176 : 1995 low hazard, BS 7176 : 1995 medium hazard



100% polyester Trevira CS / Abrasion resistance
100.000 Martindale / Flammability EN 1021/1 - 2,
BS 7176 medium hazard

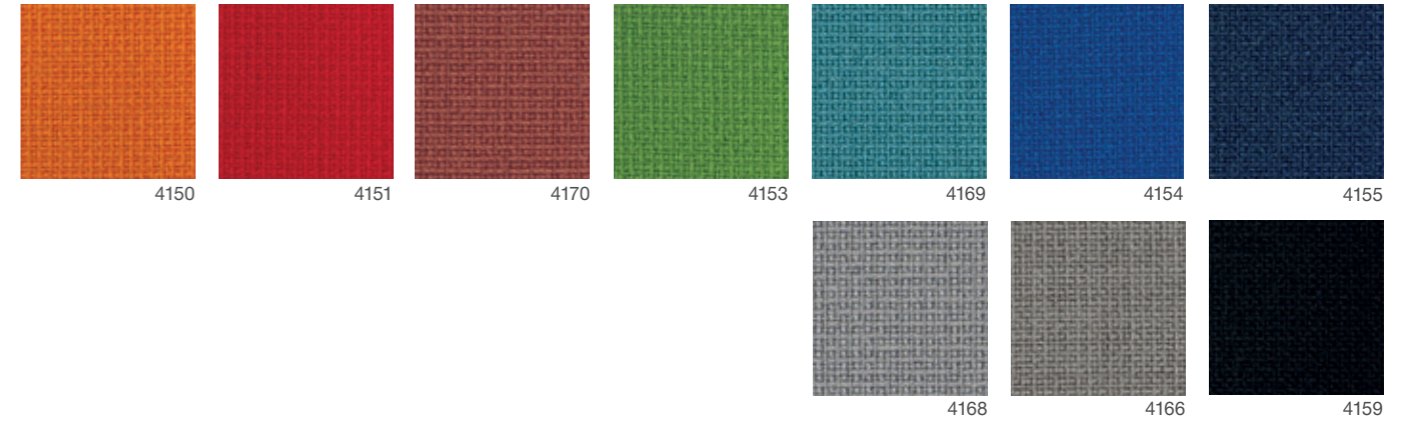


RELAX BICO/B



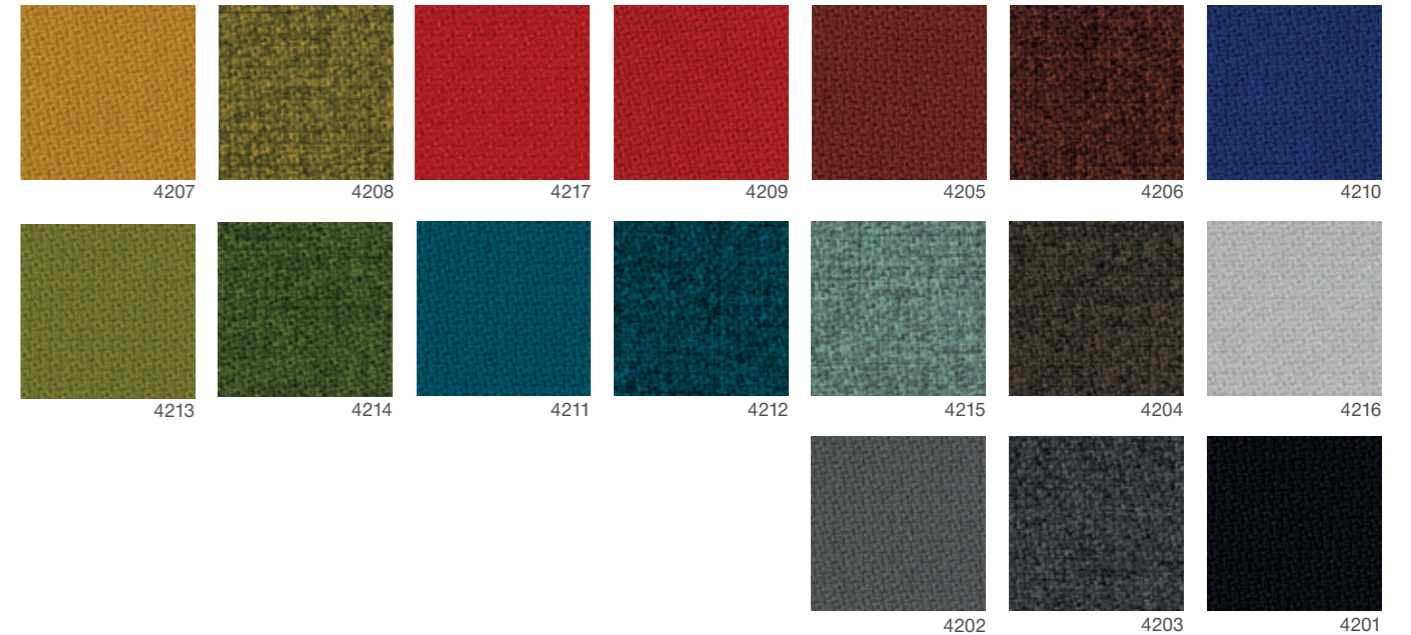
95% wool, 5% polyamide / Abrasion resistance 200.000 Martindale
Flammability EN 1021 p1&2, BS 5852, scrib 5

FAME/C



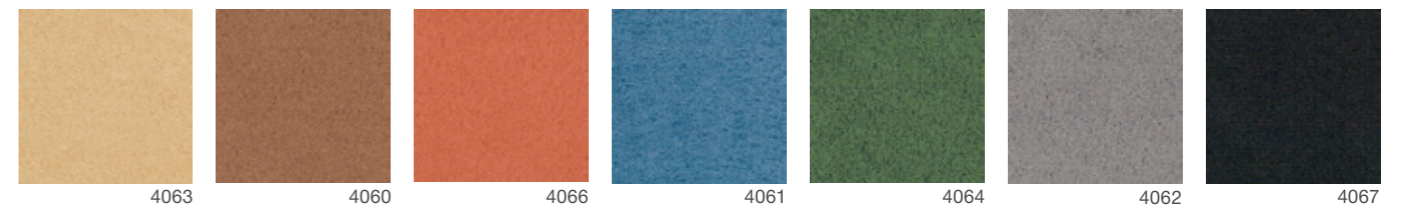
100% Trevira CS / Abrasion resistance 100.000 Martindale
Flammability EN 1021 1&2, BS 5852, Scrib 5,
BS 7176 medium hazard

STEP/C



80% polyester, 20% cotton / Abrasion resistance 50.000 Martindale

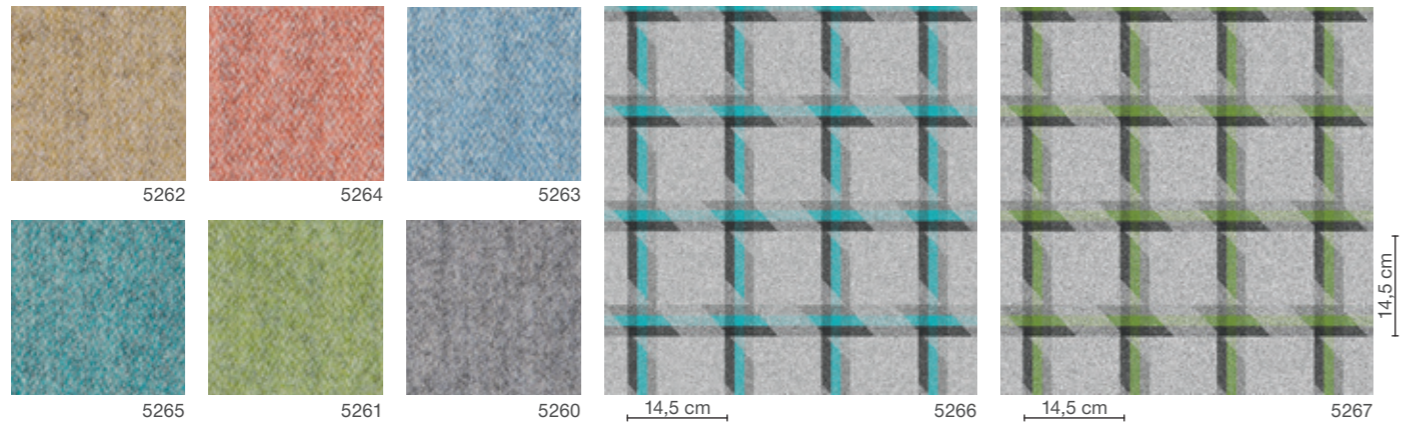
ARCA/C



D/LANDSCAPE COLLECTION



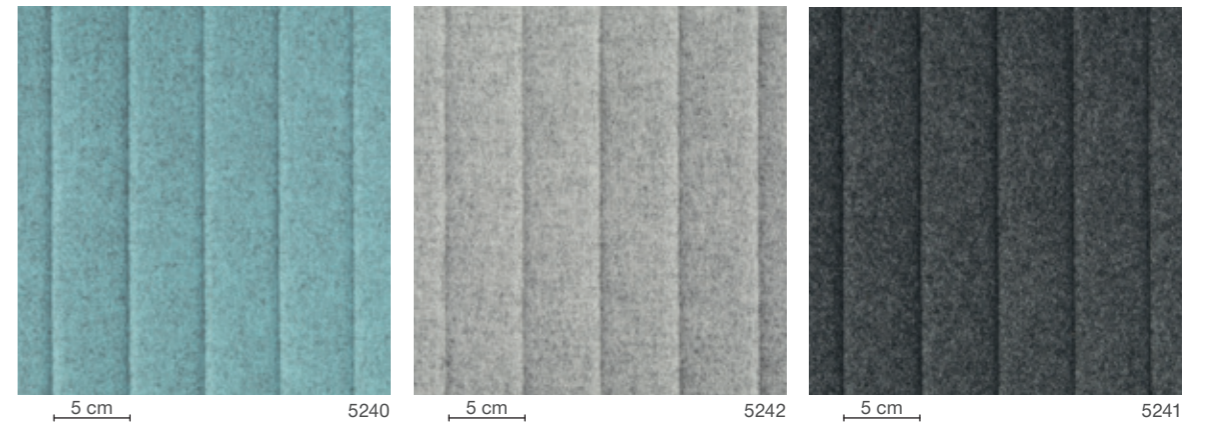
100% Wool, 5% Polyamide / Abrasion Resistance 60.000
Flammability BS 1021 - 1:2006, BS EN 1021 - 2:2006,
BS 7176 : 2007 Low Hazard



100% Wool / Abrasion Resistance 50.000
Flammability BS 1021 - 1:2006, BS EN 1021 - 2:2006,
BS 7176 : 2007 Low Hazard



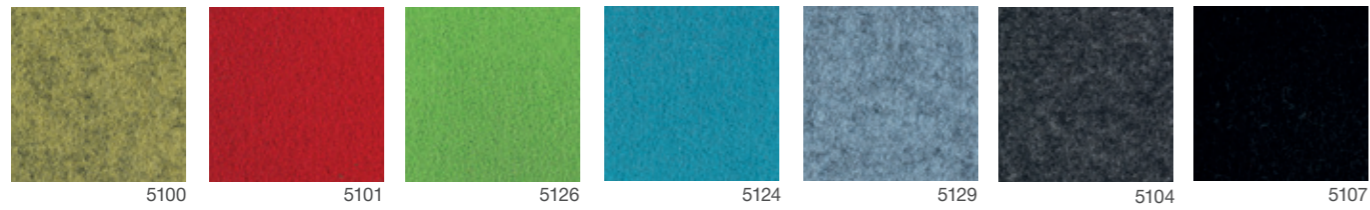
BLAZER QUILT CHANNEL/D



D/BLAZER



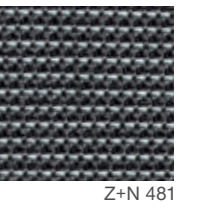
100% wool / Abrasion resistance 50.000 Martindale
Flammability EN 1021 - 1 : 2006, EN 1021 - 2 : 2006, BS 7176 : 2007
low hazard, BS 7176 : 2007 medium hazard



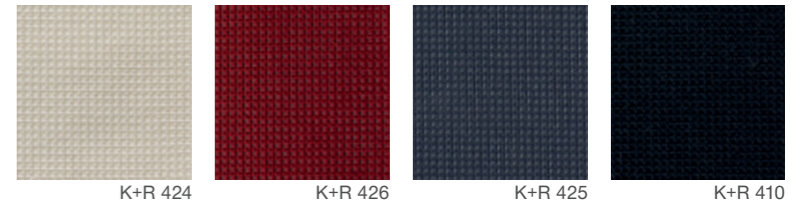
MESH



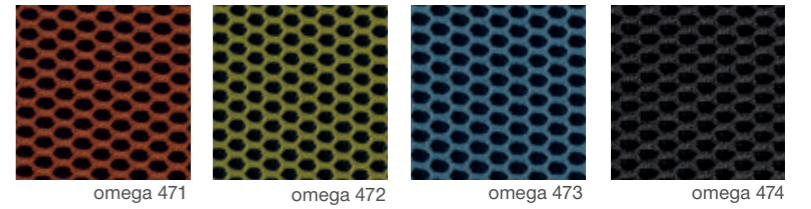
Z+N 100% polyester
Abrasion resistance 150.000 Martindale



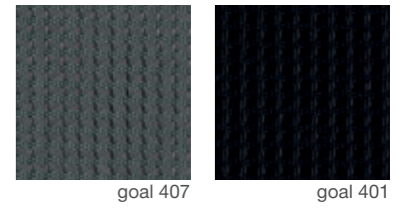
K+R / 97% polyester, 2% polyamid, 1% elasthan
Abrasion resistance 30.000 Martindale



OMEGA / 100% polyester
Abrasion resistance, 100.000 Martindale



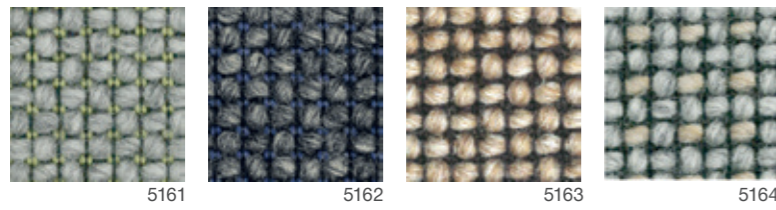
GOAL / 55% polyester, 45%polyamid
Abrasion resistance 100.000 Martindale



D/CRAGGAN



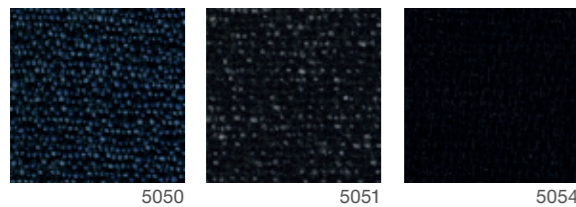
97% pure new wool, 3% FR viscose / Abrasion resistance 50.000
Martindale / Flammability BS EN 1021 - 1 : 2006, BS EN 1021 - 2 : 2006,
BS EN 7176 : 2007 low hazard, BS 5852 : 2006 section 4 ignition
source 5, BS 7176 : 2007 medium hazard



D/24/7+

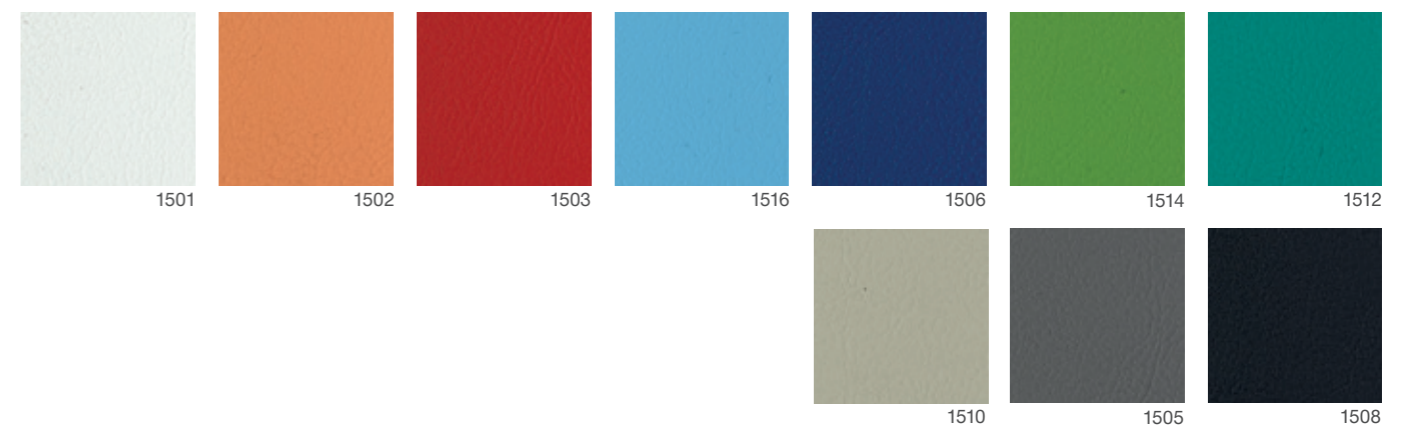


50% polyamid, 33% wool, 10% visil, 7% viscose
Abrasion resistance 50.000 Martindale / Flammability EN 1021 - 1 : 2006,
EN 1021 - 2 : 2006, BS 7176 : 2007 medium hazard



13,85% PES, 86,15% PVC / Abrasion resistance
55.000 Martindale / Flammability EN 1021 - 1, EN 1021 - 2

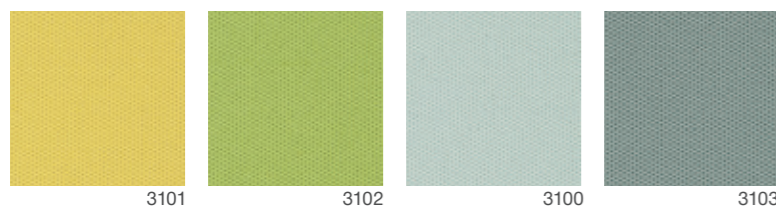
AMALFI/A



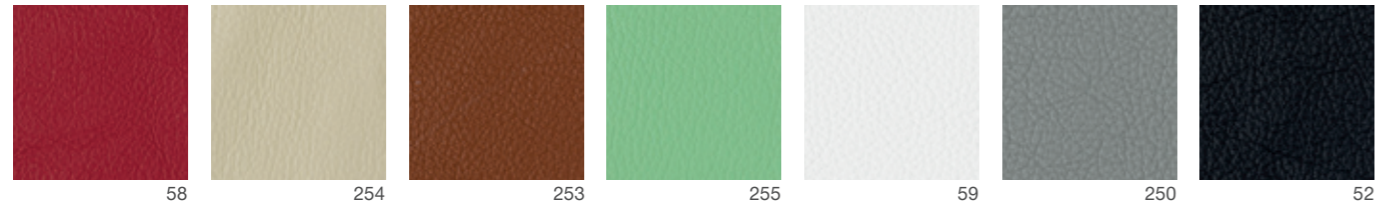
D/RACER



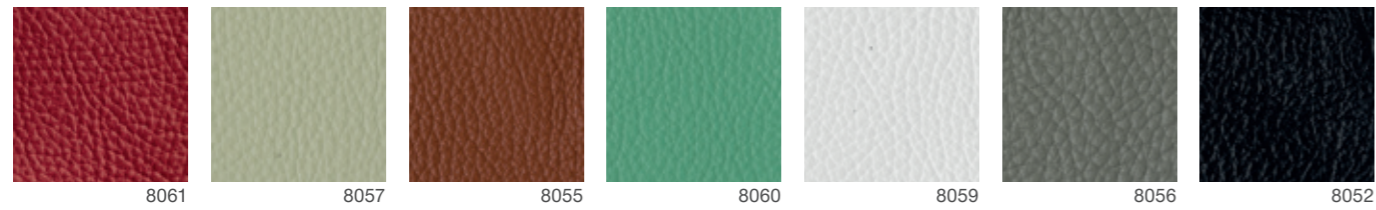
100% polyester / Flammability BS 476 Part 7 Class 1
BS EN 13501-1 Adhered B,s2,d0 / BS EN 13501-1 Un-adhered B, s1,d0



PRINCE/leather



FLORIDA/leather



LAMINATE

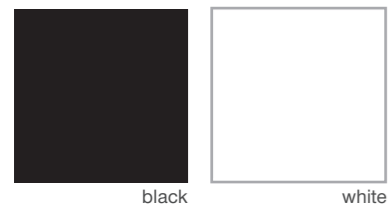


TABLE TOPS



Kancelářské židle / Drehstühle / Swivel chairs



Konferenční židle / Konferenzstühle / Conference



Sedačky / Warten-Empfangen / Waiting-Reception



Panely / Stellwände / Panels



Barevná přesnost může být zaručena pouze dle originálních vzorků látek a dekorů. Barevné vzory látek a dekorů použité v tomto vzorníku jsou tištěné reprodukce, které se mohou lišit od originálních barev a nejsou proto důvodem k reklamaci.



Farbverbindlichkeit kann nur bei Originalmustern gewährleistet werden. Farbabweichungen zum originale Bezugstoff sind drucktechnisch bedingt und bieten keinen Anlass zu Reklamationen.



Colour accuracy can be guaranteed only when original samples. Differences in colour compared to the original fabrics are unavoidable in printed catalogues and do not constitute grounds for complaint.



www.rim.cz