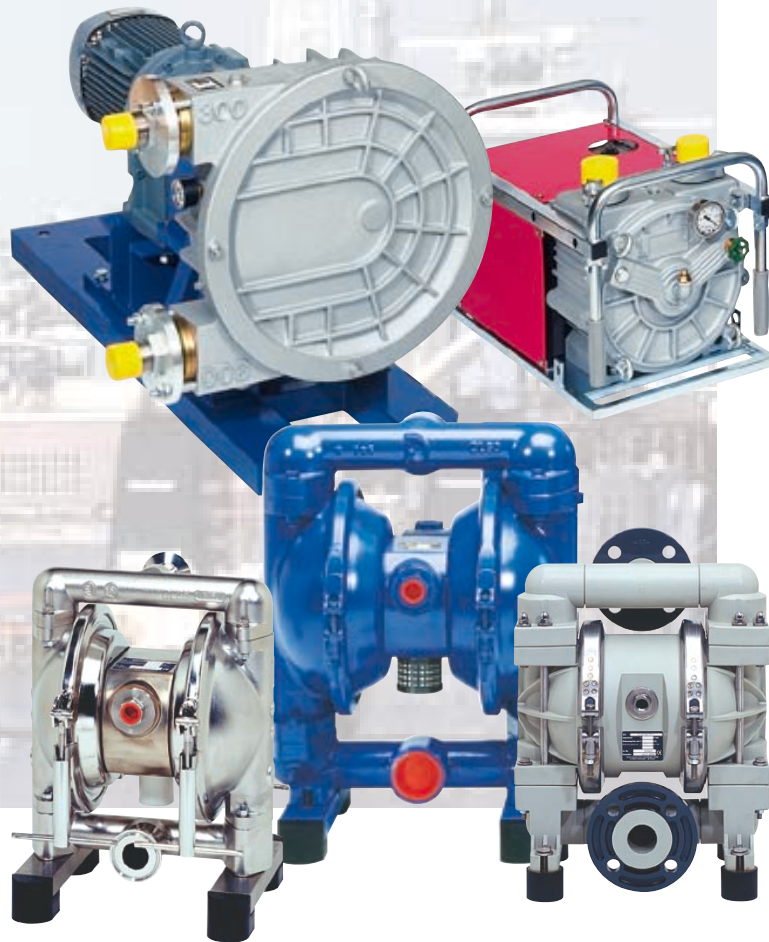


Product Overview

Positive Displacement Pumps



Innovative Technology, Long Tradition

Corporate history

For more than 30 years we have developed our program of positive displacement pumps to an outstanding top quality product world-wide.

It all started out with the well known DEPA Air Operated Diaphragm Pumps. Over the years our range of positive displacement pumps has been complemented by selected acquisition of companies.

Today we can draw on a worldwide sales and service network consisting of our own group companies and longstanding distributors as well as production sites worldwide.

By intensive research, development and the latest manufacturing techniques products are continuously expanded and updated. The testing and use of new materials plays a special role here.

Advanced quality assurance programs document all production sequences thus ensuring consistent high quality.

Customized solutions

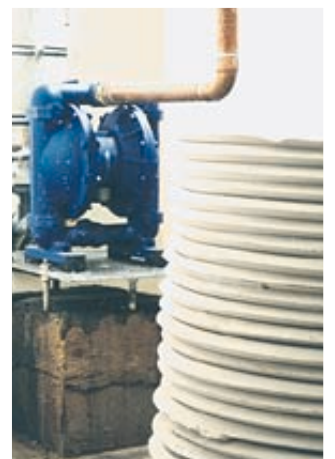
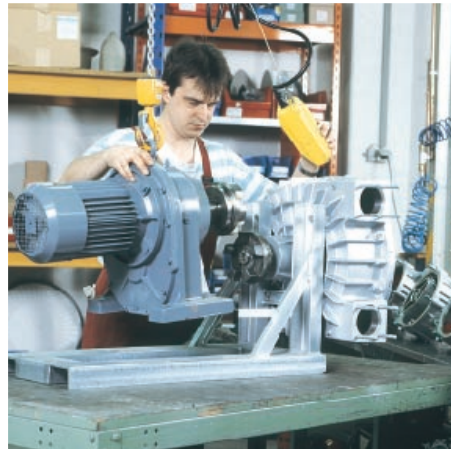
Due to our years of experience in the field of pump technology and process engineering customized special solutions can be planned and implemented at short notice. We also offer our pumps with program controls for automated systems.

Technical support

We offer comprehensive technical support. Beginning with technical advice, the selection of our positive displacement pumps, professional installation and finish with commissioning. On request the documentation relating to the respective products is available in most European languages, test certificates, factory approvals, spare part kits and installation drawings are included in our scope of supply.

Thanks to our worldwide organization we can offer our customers excellent support and after sales service even after commissioning.





DEPA Air Operated Diaphragm Pumps



Cast Metal Pumps, Series M

Universally used for problem free transfer of abrasive, entrained solids and viscous media. Their robust design ensures reliability even under the most arduous conditions.

- Type FA - Aluminium
- Type CA - Cast iron
- Type CX - Cast iron /bronze
- Type SA - Cast stainless steel 316L
- Type SX - Cast stainless steel 316L / bronze
- Type HC - Hastelloy C22, 2.4602

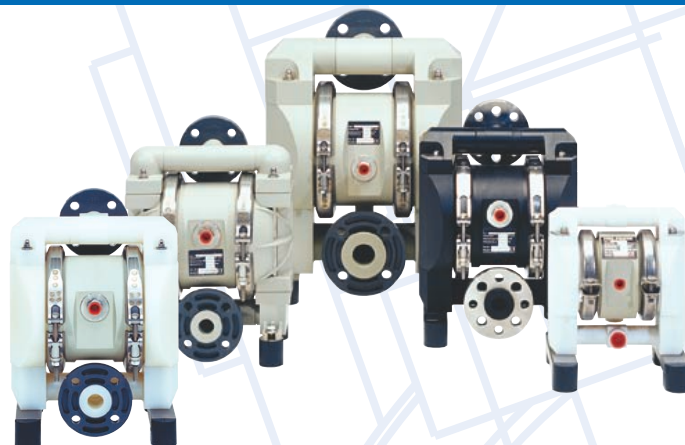
Technical data

capacity: max. 46 m³/h at 7 bar
 discharge pressure: max. 7 bar
 solid size: max. 10 mm
 air control unit: internal or external
 material of construction: aluminium, brass, stainless steel
 elastomere: NRS, EPDM, NBR, FKM, PTFE

Type	DL 15 (1/2")	DL 25 (1")	DL 40 (1 1/2")	DL 50 (2")	DL 80 (3")
FA	●	●	●	●	●
CA	-	●	●	●	●
CX	-	●	●	●	●
SA	●	●	●	●	●
SX	-	●	●	●	●
HC	-	●	●	●	-

Main applications:

- Paint and varnish industry
- Automobile industry
- Waste water industry
- Ceramic and porcelain industry
- Mining, building industry
- Chemical industry



Plastic Pumps, Series P

Distinguish themselves by a high chemical resistance, even in aggressive atmospheres. The manufacturing processes ensure excellent surface quality combined with low flow losses and good abrasion resistance.

- Type PP - Polypropylene, solid
- Type PM - Polypropylene, injection moulded
- Type PL - Polypropylene, electrically conductive
- Type PT - PTFE
- Type TL - PTFE, electrically conductive
- Type PV - PVDF

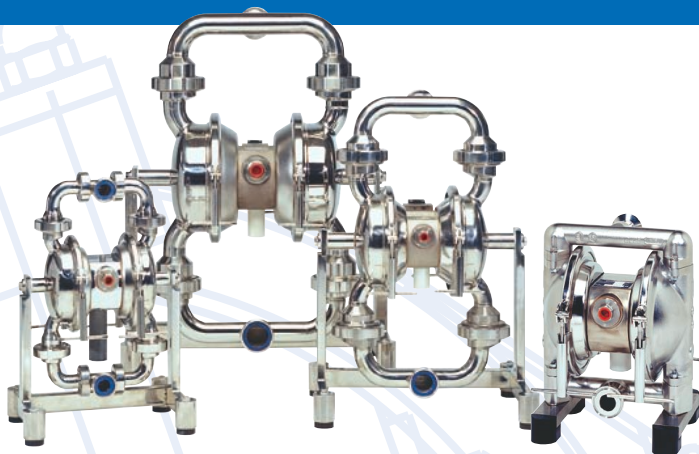
Technical data

capacity: max. 46 m³/h at 7 bar
 discharge pressure: max. 7 bar
 solid size: max. 10 mm
 air control unit: internal or external
 material of construction: polypropylene, electrically conductive
 elastomere: NRS, EPDM, NBR, FKM, PTFE

Type	DL 08 (1/4")	DL 10 (3/8")	DL 15 (1/2")	DL 25 (1")	DL 40 (1 1/2")	DL 50 (2")	DL 80 (3")
PP	-	-	●	●	●	●	●
PM	-	-	●	●	●	-	-
PL	-	-	●	●	●	●	●
PT	●	●	●	●	●	●	●
TL	●	●	●	●	●	●	●
PV	-	-	●	●	●	●	-

Main applications:

- Galvanic and coating
- Paint and varnish industry
- Pharmaceutical industry
- Chemical industry
- Plant and mechanical engineering
- Power stations, waste disposal technology



Stainless Steel Pumps, Series L Food Line

Designed for all transfer and process tasks under hygienic conditions. Even CIP and SIP cleaning is possible due to the use of top quality materials and manufacturing.

- **Type DL-SF** - Cast stainless steel 316L electro polished
- **Type DL-SL** - Stainless steel 304 polished
- **Type DL-SU** - Stainless steel 316L polished

Technical data

capacity: max. 46 m³/h at 7 bar
 discharge pressure: max. 7 bar
 solid size: max. 25 mm
 air control unit: internal or external
 material of construction: aluminium, stainless steel, brass
 elastomere: EPDM grey, PTFE (FDA)

Type	DL 15 (1/2")	DL 25 (1")	DL 40 (1 1/2")	DL 50 (2")	DL 80 (3")
DL-SF	-	●	●	●	-
DL-SL	●	●	●	●	●
DL-SU	●	●	●	●	●

Main applications:

- Food industry
- Dairies
- Beverage industry
- Chemical industry
- Breweries



Stainless Steel Pumps, Series L Aseptic Line certified by EHEDG

Allow a variety of applications in sterile processes, especially in the pharmaceutical and health care industries. The materials used conform to 3A and FDA guidelines. These versions are certified by EHEDG. (European Hygienic Equipment Design Group).

- **Type DL-UE** - Stainless steel 316 L electro polished, R_a<0,8µm
- **Type DH-UE** - Stainless steel 316 L electro polished, R_a<0,8µm

(Option: R_a < 0,5 µm available)

Technical data

capacity: max. 46 m³/h at 7 bar
 discharge pressure: max. 7 bar
 solid size: max. 25 mm
 air control unit: internal or external
 material of construction: aluminium, stainless steel, brass
 elastomere: EPDM grey, PTFE (FDA)

Type	DL 15 (1/2")	DL 25 (1")	DL 40 (1 1/2")	DL 50 (2")	DL 80 (3")
DL-UE	●	●	●	●	●
DH-UE	●	●	●	●	-

Main applications:

- Chemical industry
- Pharmaceutical industry
- Bio technology
- Medical applications
- Health care industry

DEPA Air Operated Diaphragm Pumps



High-Pressure Pumps, Series DB

Low cost solution for the implementation of a pressure maintaining operation, e.g. filter presses without elaborate open loop and closed loop control. Can be operated in the low pressure range (up to 7 bar/ 101.5 psi) with maximum flow capacity.

- **Type CA - Cast iron**
- **Type SA - Cast stainless steel 316 L**

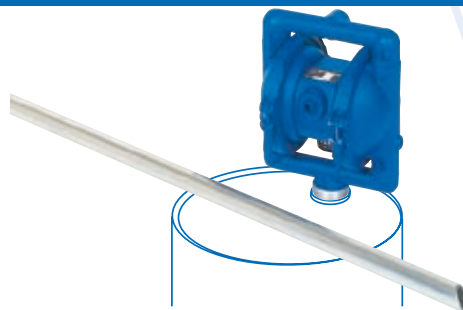
Technical data

capacity: max. 22 m³/h at 7 bar
 discharge pressure: max. 13, 16 or 21 bar
 solid size: max. 8 mm
 air control unit: internal
 elastomere: - with separate booster unit
 NRS, EPDM FKM, NBR, PTFE (FDA)

Type	DB 25 (1")	DB 40 (1 1/2")	DB 50 (2")
CA (Cast iron)	●	●	●
SA (Stainless steel 316L)	●	●	●

Main applications:

- Ceramic industry
- Automobile industry
- Waste water industry
- Chemical industry
- Environmental technology



Drum Pumps, Series DF

Low lasting and economic solution for emptying drums and containers. Direct mounting onto the container to be emptied, dry running resistant and self priming. With separate control (optional) for dosing tasks. Suitable for a variety of applications.

- **Type FA - Aluminium**
- **Type SA - Cast stainless steel 316L**
- **Type PP - Polypropylene**

Technical data

capacity: max. 7 m³/h at 7 bar
 discharge pressure: max. 7 bar
 solid size: max. 4 mm
 air control unit: internal

Type	DF 25 (1")
FA (Aluminium)	●
SA (Stainless steel 316L)	●
PP (Polypropylen)	●

Main applications:

- Chemical industry
- Automobile industry
- Waste disposal Technology
- Furniture industry
- Heavy industry

Dual Pumps, Type DZ



Ideal for simultaneously and independently transferring of two media in one pump. Due to the special design of the suction and discharge connections the transferred media do not mix.

Type	DZ 15 (1/2")	DZ 25 (1")	DZ 40 (1 1/2")	DZ 50 (2")	DZ 80 (3")
FA (Aluminium)	●	●	●	●	●
SA (Stainless steel 316L)	●	●	●	●	●

Main applications:

- Surface treatment technology
- Waste water technology
- Printing industry
- Paper processing
- Furniture industry



Powder Pumps, Series DP

For the fast transfer of easily fluidized powders from containers or trucks. The special design has excellent flow properties which is gentle to the product. Allows powder transfer with minimal environment impact, combined with mobility.

- **Type FA - Aluminium**
- **Type CA - Cast iron**
- **Type SA - Cast stainless steel 316L**
- **Type SL - Stainless steel polished**

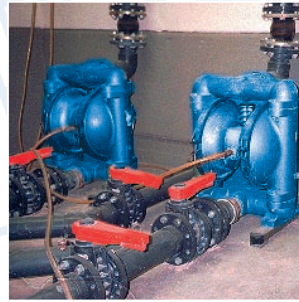
Technical data

discharge pressure: max. 7 bar
Y-suction and discharge connection with separate fluidisation equipment

Type	DP 50 (2")	DP 80 (3")	DP 125 (5")
FA (Aluminium)	●	●	●
CA (Cast iron)	●	●	-
SA (Stainless steel 316L)	-	-	●
SL (Stainless steel)	-	●	-

Main applications:

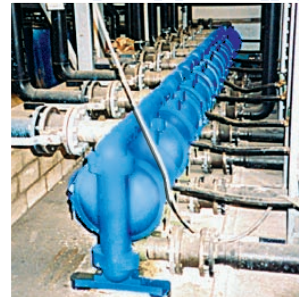
- Manufacturing and plastic products
- Organic chemistry
- Pharmaceutical industry
- Breweries
- Food industry



Waste water industry



Porcelain industry



Paint and varnish industry



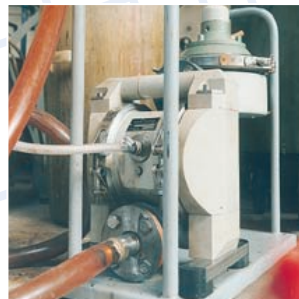
Building sites



Galvanic



Chemical industry



Paint and varnish industry



Waste disposal technology

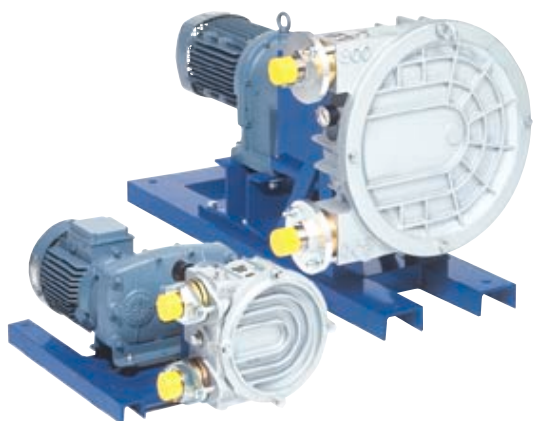


Pharmaceutical industry



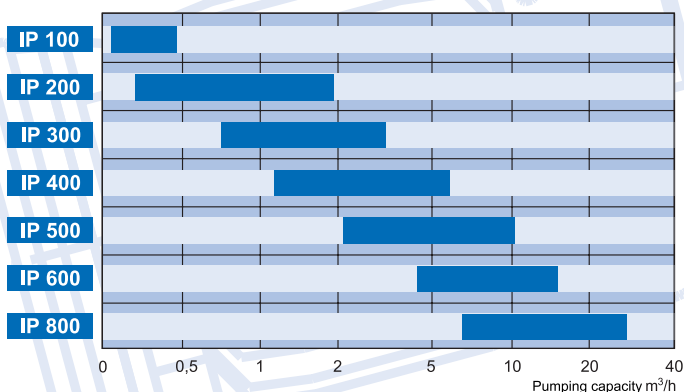
Cosmetic industry

ELRO Peristaltic Pumps



Series IP

Designed for the transfer of abrasive, long fibrous or aggressive media as well as highly viscous liquids with low shear. Dry running resistant without any seals or valves; for stationary applications under the roughest conditions.

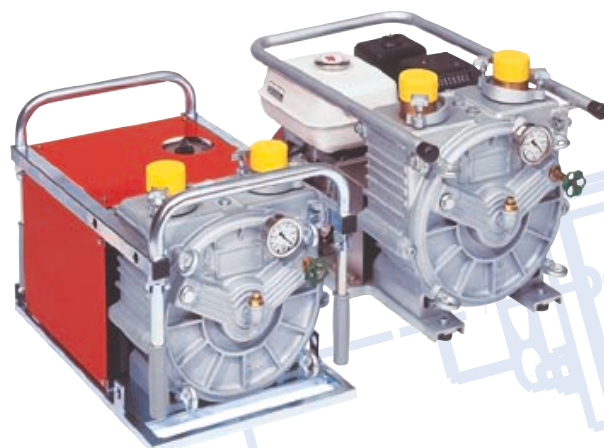


Technical data

capacity: 0,1 up to 28 m³/h
 discharge pressure: max. 13 bar
 pump casting: aluminium
 connections: 1" to 3", stainless steel, PP or PVDF
 hose material: NR, NBR, Butyl, Hypalon, EPDM
 benefits: dry self priming 9,5 m lift,
 dry running resistant
 integrated patented vacuum system
 and early warning system

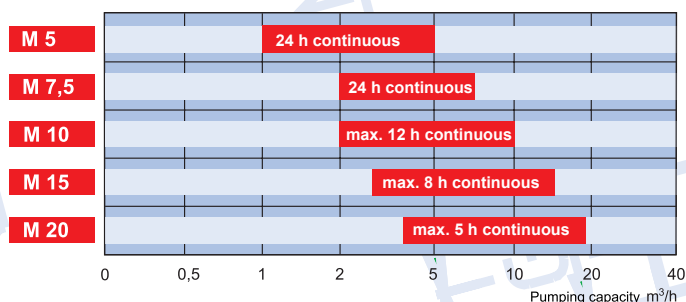
Main applications:

- Chemical industry
- Ceramic and porcelain industry
- Building industry
- Food and beverage industry
- Breweries
- Cosmetic and pharmaceutical industry
- Power stations
- Coatings and paint industry
- Waste and disposal industry



Series M 300

Economic transfer of slurries, chemicals and contaminated media. Mobile, compact general purpose pumps with high suction capacity and flow rates. Can be combined in many ways with most varied drive units and assemblies.

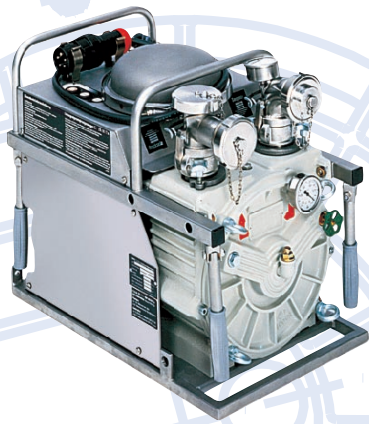


Technical data

capacity: up to 20 m³/h
 discharge pressure: max. 2 bar
 pump casting: aluminium
 connections: 2" , KL-coupling aluminium,
 stainless steel, PP or brass
 hose material: NR, NBR, Butyl, Hypalon, PUR
 benefits: dry self priming 9,5 m lift,
 dry running resistant
 integrated patented vacuum system

Main applications:

- Environmental technology
- Tank cleaning
- Building industry
- Chemical industry
- Transport
- Power stations, disposal technology
- Ships, port facilities and skimmers



Series GP20/10 EX and GUP3-1,5

Specially equipped to be used with accidents involving hazardous materials for the collection of escaped viscous or contaminated liquids. The DIN 14427 approved GUP3-1,5 pump for hazardous materials can be combined with the ELRO disposal system.

Technical data

	Level II	Level I
Pumping capacity l/min	300	150
Rated pumping pressure bar	2	2
Rated speed rpm	240	120
Suction time at 7.5m suction height sec	5	10
Motor power kW	2,75	2,1
Amperage A	6	4,8
Voltage V	400 three-phase a.c.	
Type of operation	Permanent operation s1 - VDE 0530	
Protection system	Motor EEx e II T3 Protective switch EEx de II CT6	
Connecting plug	BBC - CHG 531 7506 VO	
Sense of rotation	clockwise (see arrow)	
Connecting couplings	Suction side conical sleeve DIN 11851 - DN 50 Pressure side threaded sleeve DIN 11851 - DN50	
Dimensions lxbxh mm	620x390x520 acc. to DIN 14427	
Weight, ready for operation kg	98	
Pumping hose, electr. cond.	Hypalon	

Main applications:

- Chemical industry
- Fire brigades, rescue services
- Petroleum industry
- Coating and paint industry
- Power stations
- Ports and ships
- Petrol stations and tank vehicles



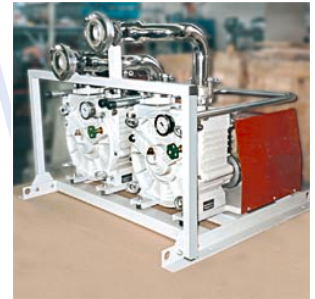
Breweries



Chemical industry



Forwarders



Environmental technology



Accident with hazardous material

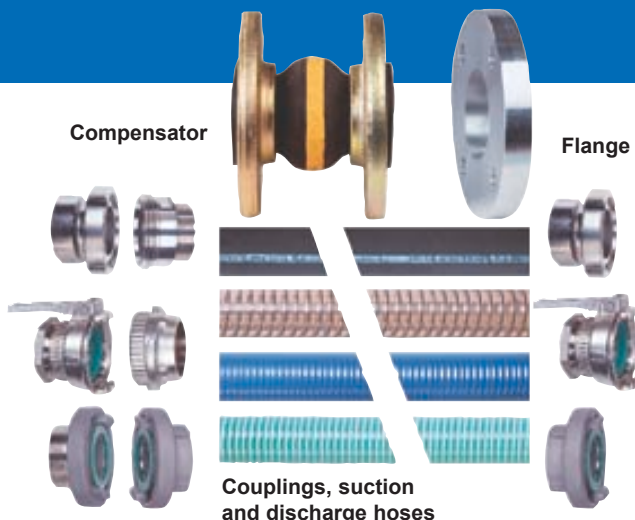


Fire brigades



Passive pulsation dampeners

Active pulsation dampeners



Compensator

Flange

Couplings, suction and discharge hoses

DEPA Accessories / Automation

DEPA Air Operated Diaphragm Pumps can be fitted with a variety of accessories for most applications, even in the field of automation.

The range of accessories comprises coupling systems, suction and discharge hoses, air service units and various suction strainers and suction pipes. The active and passive pulsation dampeners are available in the same variety of material combinations as the pumps.

The pumps can be equipped with mechanical and electronic switching equipment, sensors, slow start valve and dosing controls for monitoring purposes, open loop and closed loop control.

ELRO Accessories / Automation

ELRO Peristaltic Pumps can be fitted with a variety of accessories for most, even in the field of automation.

The range of accessories comprises coupling systems, suction and discharge hoses, various suction strainers, disc strainers, vacuum strainers and suction pipes. Active and passive pulsation dampeners are also available for the peristaltic pumps in a variety of material combinations.

The pumps can be equipped with mechanical and electronic switching equipment, sensors, early warning systems, heating, dosing and filter press controls for monitoring purposes, open loop and closed loop control.



Slow start up valve

Suction and discharge hoses

Air service unit

Diaphragm monitoring system

Filling control



Early warning system

Vacuum strainer

Special suction pipes

Pre-filter drum

Pulsationsdämpfer

Transport drum

T-pipe

Suction strainer

Disc strainer

Elbow

T-pipe

KL-coupling



Services

After sales service is high on our company's list of priorities. This includes execution of repairs on the spot or at our works, fast delivery of spare parts, and fastest possible re-commissioning. We also offer service contracts to minimize down time.

After-sales service

- On-site repairs
- Repairs at our service center
- Preventive maintenance
- Training of customers' personnel
- Mounting and rebuilding of pumps and accessories
- Commissioning
- Telephone diagnosis
- Service contracts

Inspection service

- Drawing-up of maintenance and inspection schedules
- Assessment of defects and wear as well as their causes
- Advice on the conversion to automated pump operation
- Inspection supervision

Spare parts supply

- Original spare parts of a quality tested to DIN ISO 9001
- Practical spare kits
- Clear service manuals
- Advice over the telephone
- Reliable delivery
- Modular design minimize spare part holdings



Crane Process Flow Technologies GmbH

P.O.-Box 11 12 40
D-40512 Düsseldorf
Heerdter Lohweg 63-71
D-40549 Düsseldorf
Phone +49 211 5956-0
Fax +49 211 5956-111



We reserve the right to modifications to all technical specifications.