

Explosion proof axial fans



AW-EX

- In accordance with ATEX directive 94-9 EC
- Speed-controllable
- Motor protection via cold conductor

The AW-EX fans have speed controllable external rotor motors. The fans have a square plate for wall mounting and are painted in standard black. The casing and impeller is manufactured from sheet steel. To protect the motor from overheating, cold conductors are fitted with external leads which must be connected to the U-EK230E EX motor protection relay.

The AW-Ex fan motor is approved according to ATEX. Improved safety in accordance with Ex e IIB T3 or T4.

Accessories for Ex-fans only on request.

ELECTRICAL ACCESSORIES



U-EK 230E EX
p. 338



R-DK4 KT
p. 323



RTRD p. 321

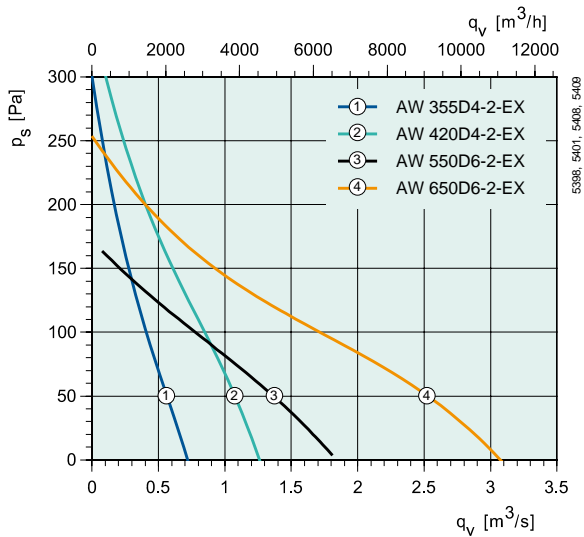


RTRDU p. 321



Ex e-Terminal
box 32A
p. 339

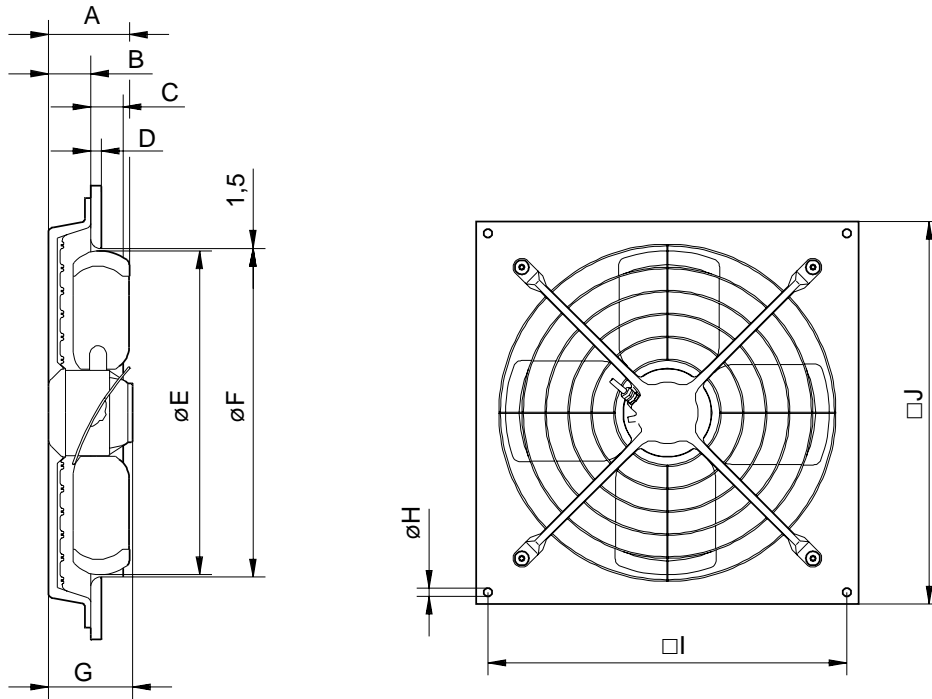
QUICK SELECTION



TECHNICAL DATA

AW		355 D4-2-EX	420 D4-2-EX	550 D6-2-EX	650 D6-2-EX
Art no		5969	5970	5971	5972
Voltage/Frequency	V/50 Hz	400 3~	400 3~	400 3~	400 3~
Power	W	286	536	579	1077
Current	A	0.27	0.943	1.15	1.78
Max air flow	m³/s	0.694	1.23	1.84	3.04
R.p.m.	min ⁻¹	1420	1269	697	790
Max temp. of transported air	°C	40	40	40	40
" when speed controlled	°C	40	40	40	40
Sound pressure level at 3 m	dB(A)	62	69	67	72
Weight	kg	9	10	13	20
Insulation class, motor		F	F	F	F
Enclosure class, motor		IP 44	IP 44	IP 44	IP 44
Motor protection		U-EK230E EX	U-EK230E EX	U-EK230E EX	U-EK230E EX
Certificate		ZELM 05 ATEX0279X	ZELM 05 ATEX0279X	ZELM 05 ATEX0279X	ZELM 05 ATEX0279X
Speed control, five step	Transformer	RTRD 2*	RTRD 2*	RTRD 2*	RTRD 2*
Speed control, five step high/low	Transformer	RTRDU 2*	RTRDU 2*	RTRDU 2*	RTRDU 2*
Wiring diagram p. 391-400		19	19	19	19
* + U-EK230E EX					

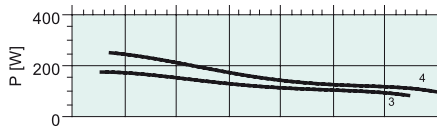
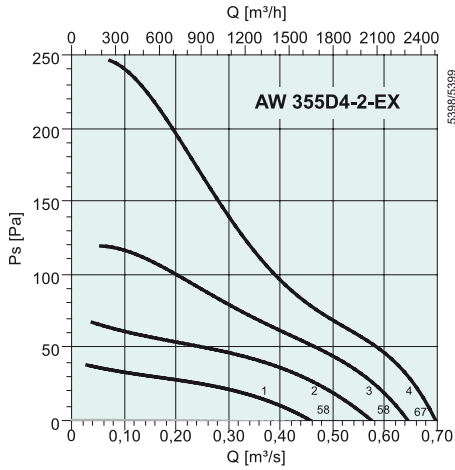
DIMENSIONS



AW	A	B	C	D	øE	øF	G	øH	I	J
355 D4-2-EX	138	48	70	16	350.5	356	125	12	385	423
420 D4-2-EX	138	71	70	16	419	426	125	14.5	460	503
550 D6-2-EX	138	72	55	18	551	558	143	14.5	610	650
650 D6-2-EX	162	66	78	18	651	658	161	14.5	730	770

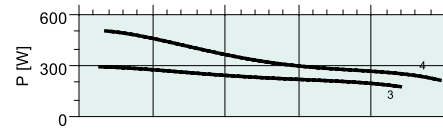
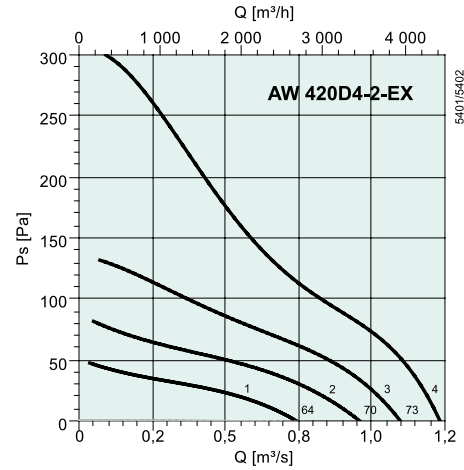
Explosion proof plate axial fans

PERFORMANCE



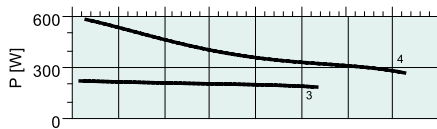
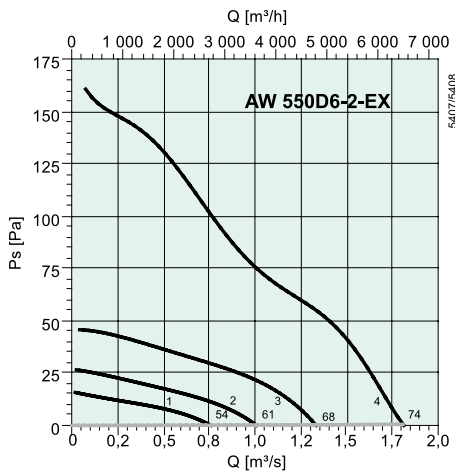
dB(A)	Tot	Frequency bands [Hz]							
		63	125	250	500	1k	2k	4k	8k
L _{WA} Inlet	69	36	56	61	60	64	62	55	46
L _{WA} Outlet	69	36	56	61	60	64	62	55	46

Measurement point: 0,47 m³/s; 76 Pa



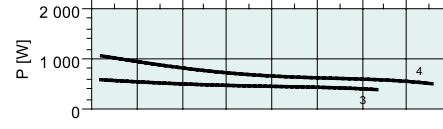
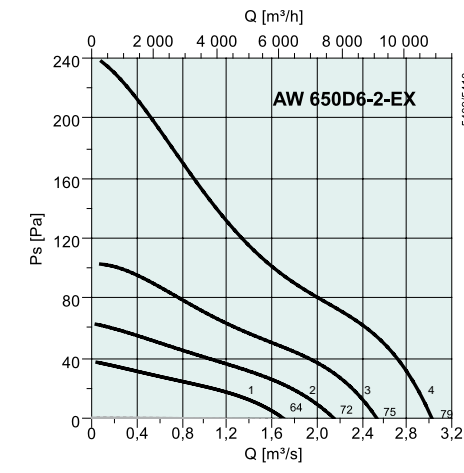
dB(A)	Tot	Frequency bands [Hz]							
		63	125	250	500	1k	2k	4k	8k
L _{WA} Inlet	76	43	64	68	69	71	70	63	54
L _{WA} Outlet	76	43	64	68	69	71	70	63	54

Measurement point: 0,84 m³/s; 96 Pa



dB(A)	Tot	Frequency bands [Hz]							
		63	125	250	500	1k	2k	4k	8k
L _{WA} Inlet	74	58	59	66	66	71	67	59	50
L _{WA} Outlet	74	58	59	66	66	71	67	59	50

Measurement point: 1,32 m³/s; 56 Pa



dB(A)	Tot	Frequency bands [Hz]							
		63	125	250	500	1k	2k	4k	8k
L _{WA} Inlet	79	63	66	69	72	74	73	64	57
L _{WA} Outlet	79	63	66	69	72	74	73	64	57

Measurement point: 2,2 m³/s; 73 Pa

Explosion proof fans