



**LIUGONG
FORKLIFT TRUCK**

GUANGXI LIUGONG MACHINERY CO.,LTD. T: +86 772 3886124 F: +86 772 3886122 E-mail:overseas@liugong.com www.liugong.com

① Material and specifications are subject to change without notice.
① Machines shown may include optional equipment. For more information, please consult our local dealers.

OBLFT-0711, Printed in China

LIUGONG
Landscaping Together



Features of LiuGong Forklift Trucks

P3

P5

Introduction of LiuGong Forklifts Product

Forklifts Product Series

P6

1.5-3.5T Counter Balanced Electric Forklifts

P7

P9

1.5-3.5T Counter Balanced Internal Combustion Diesel Forklift

5-7T Counter Balanced Internal Combustion Diesel Forklift

P11

1.5-3.5T Mast Specifications

P13

P15

5-7T Mast Specifications

Optional Products & Forklift Attachment

P17

Features of LiuGong Forklift Trucks

Wide, comfortable, safety

- Wide operation environment with people oriented seat, reducing operator's fatigue.
- Adjustable steering wheel and new type multifunctional instrument.
- Posted double lifting cylinder brings wide front vision and high working efficiency.

Anti-skid pedal

Smart steering

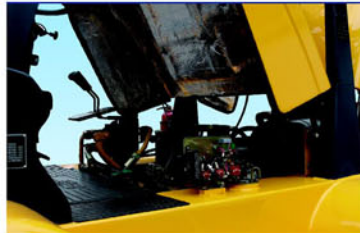


Nice

- Streamlined body design, brings nice appearance; anti-skid sides pedal, brings convenient operation.

Smart

- Horizontal swing cylinder and swing axle with shock absorber brings a compact and smart structure.



Open engine cover

Convenient

- Front and back open engine cover, brings a cool and quiet engine; main parts are all in a maintainable place, brings a easy maintained forklift.

Clean

- The dual air filter is optional according to the requirement of customer.
- Air vent is in the top of machine, ensuring clean air supply and long using life of machine.



Air filter



Air vent

Introduction of LiuGong Forklifts Product

Development Vision

LiuGong's forklifts will range from 1.5 ton to 42 ton products, and the leading products will be at the advanced leading position in domestic market and matched the technological level of stage 2 manufacture and the volume of selling and producing will reach the third largest manufacture in China; developing high technology forklifts such as: large tonnage forklifts, warehouse forklifts, high quality electric forklifts (especially medium electric forklifts), diesel/LPG forklifts, container forklifts, special purpose forklifts, and front rigging forklifts; researching, developing and manufacturing components with own core technology. Furthermore, LiuGong forklifts will have higher competitiveness on price, competitiveness, and performance.

Strategic target in 5 years

- Liugong forklift products should be with whole series of advanced forklift's product line, and with comparative preponderance in mainstream products.
- Liugong forklift products should be in coordination with international advanced technology and performance, and meet the Environmental Protection Law and emissions of Europe and America.
- Liugong forklift products should be with own reach and development technology, and have the ability to accomplish nearly all design and manufacture of special requirement order.
- Liugong forklift products should install axles, transmissions, and controlling components with our own intellectual property rights.
- Liugong forklift products should be in higher quality with lower costs.

Forklifts Product Series

Liugong acquired Shanghai Forklift Ltd. , a professional forklift company in China in 2002. From then on, Liugong integrated and optimized the manufacturing technology. Now, Liugong has a full forklift product line.

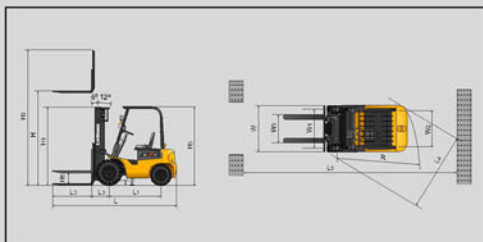
- 1.5-3T Counter Balanced Electric Forklift
- 1.5-3.5T Counter Balanced Internal Combustion Diesel Forklift
- 5-7T Counter Balanced Internal Combustion Diesel Forklift



1.5-3.5T Counter Balanced Electric Forklifts

Designed by LiuGong itself, Electric forklift is for the place with high environment requirement, such as stations, factories and mines and warehouses.

- CPD15 CPD20 CPD25 CPD30



Item		Model	CPD15	CPD20	CPD25	CPD30	
Rated capacity	kg		1500	2000	2500	3000	
Load center	mm		500	500	500	500	
Max. lifting height	mm	H	3000	3000	3000	3000	
Fork free lift height	mm	H ₀	110	110	110	110	
Max. lifting speed (loaded)	mm/s		280	280	280	280	
Tilt angle (fwd / bwd)			6°/ 12°	6°/ 12°	6°/ 12°	6°/ 12°	
Transmissions type			Eletromtion	Eletromtion	letromtion	Eletromtion	
Max. travel speed (l/l)	km/h		14	13	13	13	
Max. gradeability (loaded)	%		12	12	12	12	
Turning radius	mm	R	1850	2065	2065	2300	
Dimensions	Length	L	2955	3425	3425	3580	
	Width	W	1080	1150	1150	1260	
	Mast lowered height	H ₁	2030	2040	2040	2124	
	Mast extended height	H ₂	3925	4000	4000	4160	
	Overhead guard height	H ₃	2110	2150	2150	2150	
Ground clearance	mm	H ₄	110	120	120	100	
Fork size (lengthxwidthxthick)	mm	L ₂	1070 x 100 x 35	1070 x 120 x 40	1070 x 120 x 40	1070 x 125 x 45	
Fork spread	mm	W ₁	200-916	250-1020	250-1020	250-1130	
Wheel base	mm	L ₁	1300	1500	1500	1625	
Track	Front	mm	W ₁	890	972	972	1010
	Rear	mm	W ₂	870	950	950	980
Fork overhang	mm	L ₃	400	471	471	496	
Min.right angle aisle width	mm	L ₄	1900	2000	2000	2200	
Min.right angle stacking aisle width	mm	L ₅	3300	3700	3700	3900	
Service weight	kg		2850	4080	4080	5200	
Tyre	Front		6.50-10-10PR	7.00-12-12PR	7.00-12-12PR	28 x 9-15-14PR	
	Rear		5.00-8-8PR	18 x 7-8-14PR	18 x 7-8-14PR	18 x 7-8-14PR	
Battery model—Voltage/ Capacity			D400-48/400	D630-48/630	D630-48/630	D600-80/600	
Electromotor	Drive power	kW	5	6.3	6.3	10	
	Load handing power	kW	6.3	7.5	7.5	13	
	Power steering power	kW	0.55	0.85	0.85	-	
Control			EV100	H2B	H2B	H2B600/HP350A	

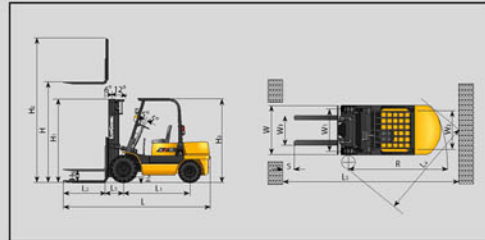
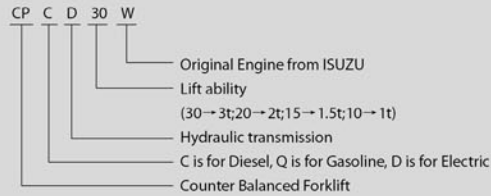
1.5-3.5T Counter Balanced Internal Combustion Diesel Forklift

Streamline appearance designed, Liugong Counter Balanced Internal Combustion Diesel Forklift has these advantages: low center of gravity, easy to operate and maintain, powerful engine, safe and reliable.

- Mechanism: CPC15 CPC20 CPC25 CPC30 CPC35
- Hydraulic: CPCD15 CPCD20 CPCD20W CPCD25 CPCD25W CPCD30 CPCD30W CPCD35 CPCD35W



Model

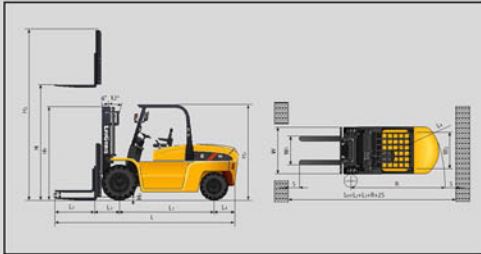
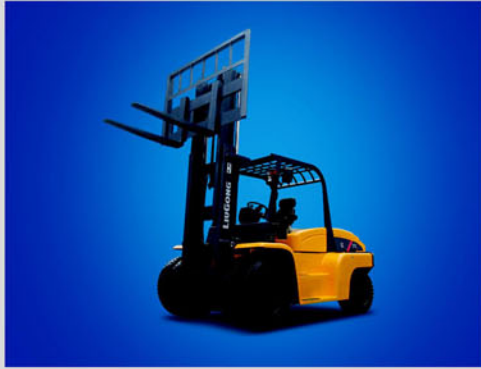


Item		Model	CPC15	CPCD15	CPC20	CPCD20	CPCD20W	CPC25	CPCD25	CPCD25W	CPC30	CPCD30	CPCD30W	CPC35	CPCD35	CPCD35W				
Rated capacity	kg		1500		2000			2000		3000		3000		3500						
Load center	mm		500		500			500		500		500		500						
Max. lifting height	mm	H	3000		3000			3000		3000		3000		3000						
Fork free lift height	mm	H _f	110		110			110		220		220		220						
Max. lifting speed (loaded)	mm/s		480		450			450		430		430		430						
Tilt angle (fwd / bwd)			6°/ 12°		6°/ 12°			6°/ 12°		6°/ 12°		6°/ 12°		6°/ 12°						
Transmissions type			mechanical		hydraulic		mechanical		hydraulic		mechanical		hydraulic		mechanical		hydraulic			
Max. travel speed (l/ll)	km/h		8/15		15		8/19		19		8/19		19		8/19		19			
Max. gradeability (loaded)	%		20		20			20		20		15		18		20		15		
Turning radius	mm	R	1950		2170			2170		2400		2400		2400		2400				
Dimensions	Length	mm	L	3168		3577			3577		3744		3744		3744					
	Width	mm	W	1080		1166			1166		1266		1266		1266					
	Max lowered height	mm	H _l	2030		2040			2040		2124		2124		2124					
	Max extended height	mm	H _e	3920		4000			4000		4120		4120		4120					
	Overhead guard height	mm	H _o	2056		2100			2100		2125		2125		2125					
Ground clearance	mm	H _g	100		120			120		135		135		135						
Fork size (lengthxwidthxthick)	mm	L _z	1025*100*35		1170 x 120 x 40			1070 x 120 x 40		1070 x 125 x 45		1070 x 125 x 45		1070 x 125 x 45						
Fork spread	mm	W _f	200-916		250-1020			250-1020		250-1130		250-1130		250-1130						
Wheel base	mm	L ₁	1400		1600			1600		1700		1700		1700						
Track	Front	mm	W ₁	890		960			960		1000		1000		1000					
	Rear	mm	W ₂	870		980			980		980		980		980					
Fork overhang	mm	L ₃	425		432			432		494		494		494						
Min.right angle aisle width	mm	L ₄	1960		2050			2050		2150		2150		2150						
Min.right angle stacking aisle width	mm	L ₅	3495		3795			3795		4050		4050		4050						
Service weight	kg		2550		3340		3400		3570		3630		4300		4360		4500		4560	
Tyre	Front		6.50-10-10PR		7.00-12-12PR			7.00-12-12PR		28 x 9-15-14PR		28 x 9-15-14PR		28 x 9-15-14PR		28 x 9-15-14PR				
	Rear		5.00-8-8PR		6.00-9-10PR			6.00-9-10PR		6.50-10-10PR		6.50-10-10PR		6.50-10-10PR		6.50-10-10PR				
Engine	Model		NB485BPG		A490BPG		C240PKJ		A490BPG		C240PKJ		A490BPG		C240PKJ		A495		C240PKJ	
	Rated power	kW/r/min	30/2600		37/2650			37/2650		37/2650		37/2650		37/2650		42/2650				
	Max.torque	N.m/r/min	131/1820		145/1850			145/1850		145/1850		145/1850		145/1850		174/1800-1900				
	Air displacement	L	2.27		2.54			2.54		2.54		2.54		2.54		2.98				

5-7T Counter Balanced Internal Combustion Diesel Forklift

Streamlined appearance, Liugong Counter Balanced Internal Combustion Diesel Forklift is human oriented with a reasonable distribution structure and wide operation space. The transmission system has good acceleration ability. With the latest International forklift technology and LiuGong 50 years machinery experience, LiuGong forklift products is easy maintenance and with stable performance.

- CPD50 CPD50W CPD60 CPD60W CPD70 CPD70W



Item		Model	CPD50	CPD50W	CPD60	CPD60W	CPD70	CPD70W
Rated capacity	kg		5000		6000		7000	
Load center	mm		600		600		600	
Max. lifting height	mm	H	3000		3000		3000	
Fork free lift height	mm	H ₁	200		205		210	
Max. lifting speed (loaded)	mm/s		520		520		460	
Tilt angle (fwd / bwd)			6°/ 12°		6°/ 12°		6°/ 12°	
Transmissions type			hydraulic		hydraulic		hydraulic	
Max. travel speed	km/h		25		25		28	
Max. gradeability	%		30/25		30/25		30/25	
Max. Traction	kN		55		55		55	
Turning radius	mm	R	3250		3300		3550	
Dimensions	Length	mm	L		3405		3584	
	Width	mm	W		2045		2045	
	Mast lowered height	mm	H ₁		2503		2503	
	Mast extended height	mm	H ₂		4409		4409	
	Overhead guard height	mm	H ₃		2490		2490	
Ground clearance	mm	H ₄	203		203		203	
Fork size (lengthxwidthxthick)	mm	L ₂	1220 x 150 x 55		1220 x 150 x 60		1220 x 150 x 65	
Wheel base	mm	L ₁	2250		2250		2250	
Track	Front	mm	W ₁		1492		1470	
	Rear	mm	W ₂		1730		1730	
Fork overhang	mm	L ₃	587/620		587/680		587/747	
Min.right angle aisle width	mm	L ₄	2960		3000		3255	
Service weight	kg		8000		8500		9600	
Tyre	QTY(F/R)		4/2		4/2		4/2	
	Size	Front	8.25 - 15 - 14PR		8.25 - 15 - 14PR		8.25 - 15 - 14PR	
		Rear	250 x 15 - 16PR		250 x 15 - 16PR		250 x 15 - 16PR	
Engine	Model		Zhaoyang6102BG	A-6BG1QC-02	Zhaoyang6102BG	A-6BG1QC-02	Zhaoyang6102BG	A-6BG1QC-02
	Rated power	kw/r/min	72.8/2200		72.8/2200		72.8/2200	
	Max.torque	N.m/r/min	353/1650		353/1650		353/1650	
	Air displacement	L	6/5.785		6/5.785		6/5.785	
Brake type	Driving brake		air hydraulic actuated brake		air hydraulic actuated brake		air hydraulic actuated brake	

1.5-3.5T Mast Specifications

Stander wide visibility mast



Stander wide visibility mast

No.	Max. lifting height (mm)	Load capacity (Load centre:500mm) (kg)					Mast height(mm)			Mast angle(°) Front / back	Overall weight(kg)				
		CPC15	CPC20	CPC25	CPC30	CPC35	1.5T	2-2.5T	3-3.5T		CPC15	CPC20	CPC25	CPC30	CPC35
		CPCD15	CPCD20	CPCD25	CPCD30	CPCD35					CPCD15	CPCD20	CPCD25	CPCD30	CPCD35
1	2000	1500	2000	2500	3000	3500	1530	1540	1624	6 / 12	2450	3330	3530	4291	4491
2	2500	1500	2000	2500	3000	3500	1780	1790	1874	6 / 12	2475	3365	3565	4325	4525
3	3000	1500	2000	2500	3000	3500	2030	2040	2124	6 / 12	2500	3400	3600	4360	4560
4	3300	1500	2000	2500	3000	3500	2180	2190	2274	6 / 12	2515	3421	3621	4381	4581
5	3500	1500	2000	2500	3000	3500	2280	2290	2374	6 / 12	2525	3435	3635	4395	4595
6	3700	1500	2000	2500	3000	3500	2380	2390	2474	6 / 6	2535	3483	3683	4451	4651
7	4000	1500	2000	2500	3000	3500	2580	2590	2674	6 / 6	2556	3546	3746	4521	4721
8	4250	1400	1900	2150	2800	3300	2755	2765	2849	6 / 6	2568	3598	3798	4581	4781
9	4500	1400	1900	2150	2800	3300	2930	2940	3024	6 / 6	2581	3651	3851	4641	4841
10	5000	1100	1600	1700	2400	2900	3230	3240	3324	6 / 6	2606	3755	3955	4761	4961
11	5500	900	1400	1500	2200	2700	3580	3590	3674	3 / 6	2637	3832	4032	4845	5045
12	6000	700	1200	1300	2000	2500	3930	3940	4024	3 / 6	2662	3902	4102	4922	5122

Note: The weight in the table only stands for mechanical transmission internal combustion forklifts trucks, plus 60kg for hydraulic transmission internal combustion forklifts trucks; plus 350kg for 1.5t electric trucks, plus 680kg for 2t electric trucks, plus 640kg for 3t electric trucks.

Two grades automatic wide visibility mast

No.	Max. lifting height (mm)	Load capacity (Load centre:500mm) (kg)					Mast height(mm)			Free lifting height(with backrest)			Mast angle(°) Front / back	Overall weight(kg)				
		CPC15	CPC20	CPC25	CPC30	CPC35	1.5T	2-2.5T	3-3.5T	1.5T	2-2.5T	3-3.5T		CPC15	CPC20	CPC25	CPC30	CPC35
		CPCD15	CPCD20	CPCD25	CPCD30	CPCD35								CPCD15	CPCD20	CPCD25	CPCD30	CPCD35
1	2000	1500	2000	2500	3000	3500	1530	1540	1624	495	495	560	6 / 12	2460	3340	3540	4316	4516
2	2500	1500	2000	2500	3000	3500	1780	1790	1874	745	745	710	6 / 12	2535	3425	3625	4375	4575
3	3000	1500	2000	2500	3000	3500	2030	2040	2124	995	995	960	6 / 12	2565	3465	3665	4395	4595
4	3300	1500	2000	2500	3000	3500	2180	2190	2274	1145	1145	1100	6 / 12	2575	3481	3681	4421	4621
5	3500	1500	2000	2500	3000	3500	2280	2290	2374	1245	1245	1210	6 / 6	2585	3495	3695	4465	4665
6	3700	1500	2000	2500	3000	3500	2380	2390	2474	1370	1370	1335	6 / 6	2600	3548	3748	4521	4721
7	4000	1500	2000	2500	3000	3500	2580	2590	2674	1545	1545	1510	6 / 6	2636	3626	3826	4596	4796
8	4250	1400	1900	2150	2800	3300	2755	2765	2849	1670	1670	1635	6 / 6	2653	3683	3883	4656	4856
9	4500	1400	1900	2150	2800	3300	2930	2940	3024	1795	1795	1760	6 / 6	2666	3736	3936	4726	4926
10	5000	1100	1600	1700	2400	2900	3230	3240	3324	2045	2045	2010	3 / 6	2696	3845	4045	4816	5016
11	5500	900	1400	1500	2200	2700	3580	3590	3674	2345	2345	2310	3 / 6	2732	3927	4127	4940	5140
12	6000	700	1200	1300	2000	2500	3930	3940	4024	2595	2595	2560	3 / 6	2762	4002	4202	5022	5222

Note: 1. The weight in the table only stands for mechanical transmission internal combustion forklifts trucks, plus 60kg for hydraulic transmission internal combustion forklifts trucks; plus 350kg for 1.5t electric trucks, plus 680kg for 2t electric trucks, plus 640kg for 3t electric trucks.
2. Plus 395mm for 1.5t free lifting height (Load backrest excluded); Plus 513mm for 2t-2.5t free lifting height (Load backrest excluded); Plus 490mm for 3t-3.5t free lifting height (Load backrest excluded);

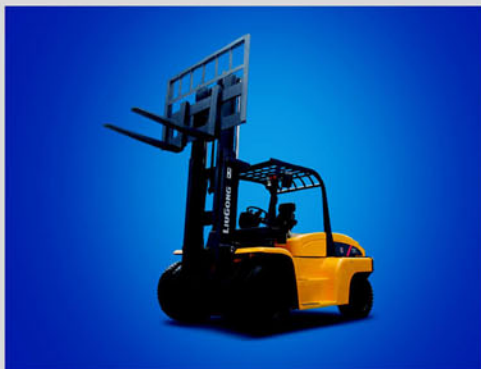
Three grades automatic wide visibility mast

No.	Max. lifting height (mm)	Load capacity (Load centre:500mm) (kg)					Mast height(mm)			Free lifting height(with backrest)			Mast angle(°) Front / back	Overall weight(kg)				
		CPC15	CPC20	CPC25	CPC30	CPC35	1.5T	2-2.5T	3-3.5T	1.5T	2-2.5T	3-3.5T		CPC15	CPC20	CPC25	CPC30	CPC35
		CPCD15	CPCD20	CPCD25	CPCD30	CPCD35								CPCD15	CPCD20	CPCD25	CPCD30	CPCD35
1	3600	1500	2000	2500	3000	3500	1655	1665	1749	755	755	670	6 / 6	2615	3750	3950	4525	4725
2	4000	1500	2000	2500	3000	3500	1855	1865	1949	880	880	795	6 / 6	2650	3785	3985	4560	4760
3	4350	1500	2000	2500	3000	3500	2030	2040	2124	1005	1005	920	6 / 6	2680	3815	4015	4590	4790
4	4500	1500	2000	2500	3000	3500	2105	2115	2199	1055	1055	970	6 / 6	2690	3825	4025	4600	4800
5	4700	1100	1600	1700	2400	2900	2205	2215	2299	1120	1120	970	6 / 6	2710	3845	4045	4620	4820
6	4800	1100	1600	1700	2400	2900	2255	2265	2349	1155	1155	1070	6 / 6	2720	3855	4055	4630	4830
7	5000	1100	1600	1700	2400	2900	2405	2415	2499	1255	1255	1170	6 / 6	2860	3995	4195	4770	4970
8	5500	900	1400	1500	2200	2700	2705	2715	2799	1380	1380	1295	3 / 6	3040	4175	4375	4950	5150
9	6000	700	1200	1300	2000	2500	3005	3015	3099	1605	1605	1520	3 / 6	3090	4225	4425	5000	5200

Note: 1. The weight in the table only stands for mechanical transmission internal combustion forklifts trucks, plus 60kg for hydraulic transmission internal combustion forklifts trucks; plus 350kg for 1.5t electric trucks, plus 680kg for 2t electric trucks, plus 640kg for 3t electric trucks.
2. Plus 395mm for 1.5t free lifting height (Load backrest excluded); Plus 513mm for 2t-2.5t free lifting height (Load backrest excluded); Plus 490mm for 3t-3.5t free lifting height (Load backrest excluded);

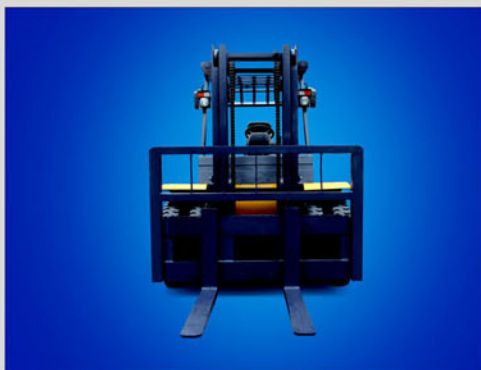
5-7T Mast Specifications

Stander wide visibility mast



Stander wide visibility mast

No.	Max. lifting height (mm)	Load capacity (Load centre:500mm) (kg)						Mast height(mm)	Mast angle(-) Front / back	Overall weight(kg)					
		CPCD50	CPCD50W	CPCD60	CPCD60W	CPCD70	CPCD70W			5-7T	CPCD50	CPCD50W	CPCD60	CPCD60W	CPCD70
1	3000	5000		6000		7000		2503	6 / 12	8000		8500		9600	
2	3500	4500		5400		6300		2753	6 / 12	8080		8580		9680	
3	4000	4000		4800		5600		3053	6 / 12	8160		8660		9760	
4	4500	3500		4400		4900		3303	6 / 6	8240		8740		9840	
5	5000	3000		3600		4200		3553	6 / 6	8320		8820		9920	
6	5500	2500		3000		3500		3853	6 / 6	8400		8900		10000	
7	6000	2000		2400		2800		4103	6 / 6	8480		8980		10080	



Two grades automatic wide visibility mast

No.	Max. lifting height (mm)	Load capacity (Load centre:500mm) (kg)						Mast height(mm)	Mast angle(-) Front / back	Overall weight(kg)					
		CPCD50	CPCD50W	CPCD60	CPCD60W	CPCD70	CPCD70W			5-7T	CPCD50	CPCD50W	CPCD60	CPCD60W	CPCD70
1	3000	5000		6000		7000		2503	6 / 12	8100		8600		9700	

Three grades automatic wide visibility mast

No.	Max. lifting height (mm)	Load capacity (Load centre:500mm) (kg)						Mast height(mm)	Mast angle(-) Front / back	Overall weight(kg)					
		CPCD50	CPCD50W	CPCD60	CPCD60W	CPCD70	CPCD70W			5-7T	CPCD50	CPCD50W	CPCD60	CPCD60W	CPCD70
1	4500	3500		4400		4900		2503	6 / 6	8500		9000		10100	

Clamps truck



Optional Products

Meets the demand of global customers in all working condition

Three grades mast forklift



Two grades mast forklift



Tobacco carton clamp



Multi-purpose clamp



Push/pull



Forklift truck with cab



Hinged fork truck



Block Clamp



Paper roll clamps



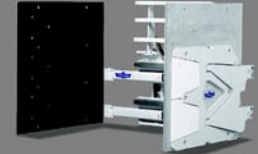
Forklift Attachment

LiuGong Forklift is portable to various attachments. For more portable attachments, please contact your local dealer.

Turnaload



Carton Clamp



Hook truck



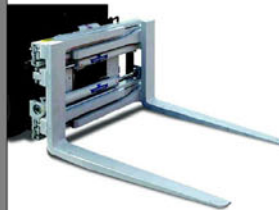
Bucket truck



Single Double Pallet Handler



Fork clamp



Drum clamp



Bale Clamp

