

Hiab 013 T

Capacity 1.2 tm

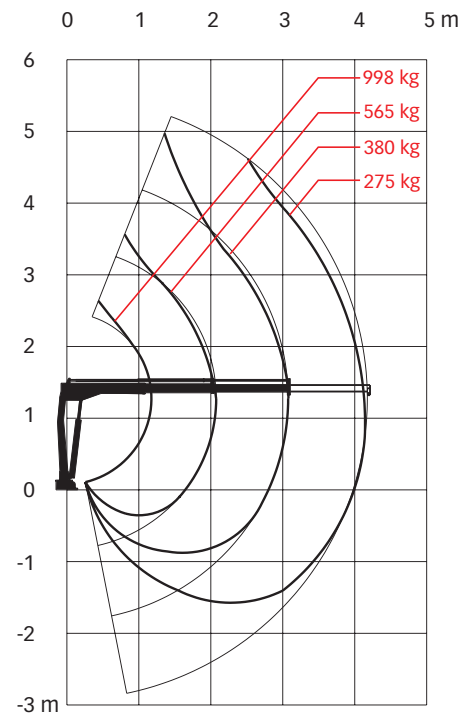


Hiab 013 T Technical data

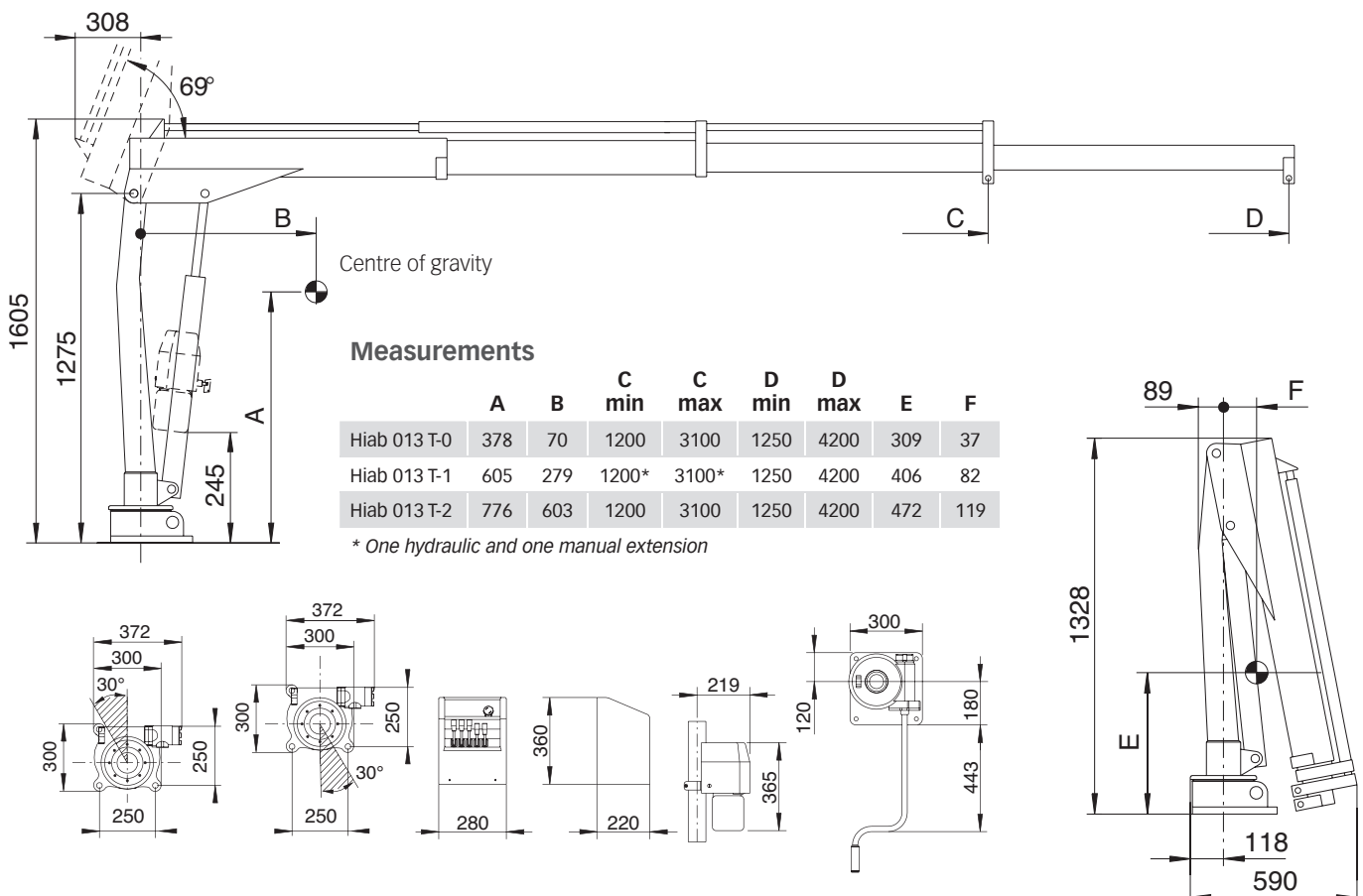
Technical data	013 T-0	013 T-1	013 T-2
Max. lifting capacity (kNm)	11.8	11.7	11.5
Outreach, hydraulic extensions (m)	-	2.1	3.1
Hydraulic boom extensions (m)	-	0.9	1.9
Extension cylinder pulling force (kN)	-	9.9	9.9
Extension cylinder pushing force (kN)	-	19.4	19.5
Outreach, manual extensions (m)	4.2	4.2	4.2
Max. lifting height above installation level - with manual extensions (m)*	-	4.2	4.2
	5.2	5.2	5.2
Outreach / lifting capacity (m/kg)	1.2 / 998	1.2 / 998	1.2 / 998
	2.1 / 565	2.1 / 565	2.1 / 565
	3.1 / 380	3.1 / 380	3.1 / 380
Outreach / lifting capacity, manual extension (m/kg)	4.2 / 275	4.2 / 275	4.2 / 275
Rec. oil flow, V91 and fixed pump (l/min)	5	5	5
Power needed at rec. oil flow (kW)	-	1.3	1.3
Max. working pressure (MPa)	16.3	16.4	16.5
Slewing angle (°)	322	322	322
Max. slope viable at full capacity (°)	-	5	5
Slewing torque, gross (kNm)	-	3	3
Slewing speed (°/s)	-	10	10
Lifting speed at standard hydraulic outreach (m/s)	-	0.32 (3.1 m)	0.32 (3.1 m)
Height in folded position (mm)	1328	1328	1328
Width in folded position (mm)	590	590	590
Weight, standard version (kg)	125	145	155

*One hydraulic and one manual extension

Load diagram



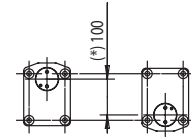
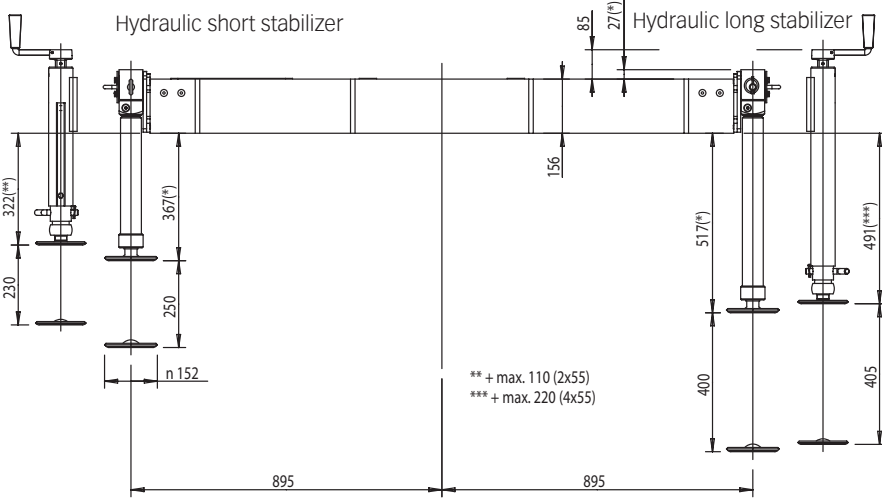
Hiab 013 T



Hiab 013 T Fixed stabilizer

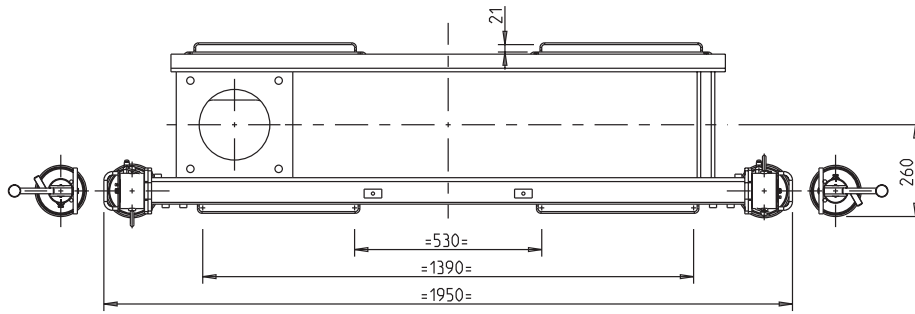
Manual short stabilizer

Manual long stabilizer



Alternative mounting position tilting kit

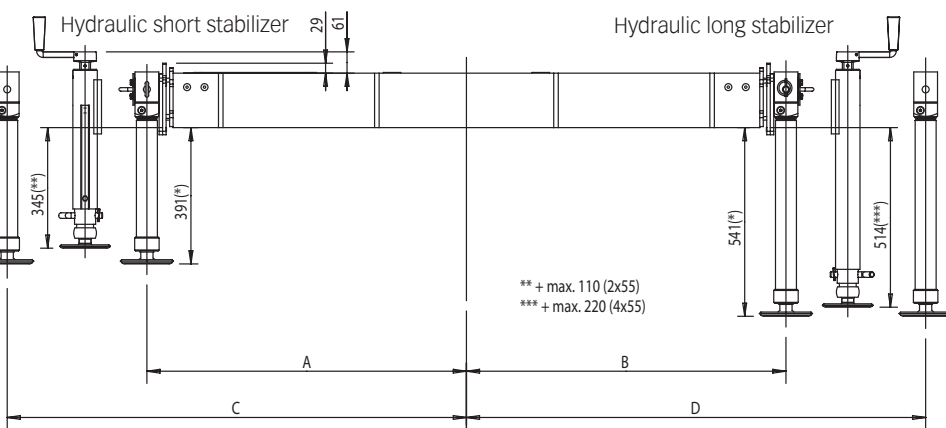
** + max. 110 (2x55)
 *** + max. 220 (4x55)



Hiab 013 T Extension stabilizer

Manual short stabilizer

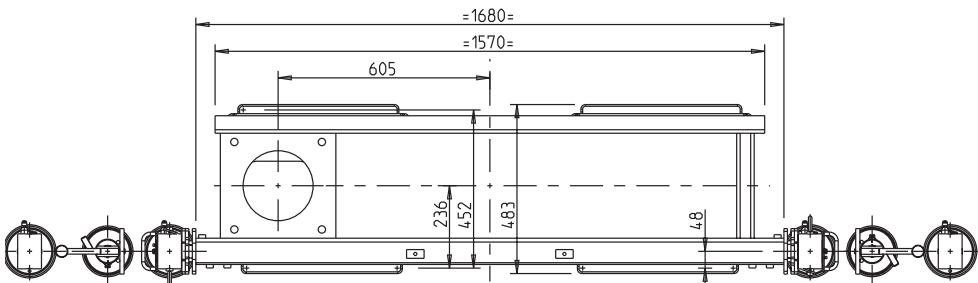
Manual long stabilizer



** + max. 110 (2x55)
 *** + max. 220 (4x55)

SPL. Single beam

	A	B	C	D
400/Fixed	915	895	1315	-
400/400	915	915	1315	1315
800/Fixed	915	895	1715	-
800/400	915	915	1715	1315
1100/Fixed	915	895	2015	-



Cargotec improves the efficiency of cargo flows on land and at sea - wherever cargo is on the move. Cargotec's brands MacGregor, Kalmar and Hiab are recognised leaders in cargo and load handling solutions around the world. Cargotec's global network is positioned close to customers and offers extensive services that ensure the continuous, reliable and sustainable performance of equipment. www.cargotec.com

