

Hiab XS 544

Range 51 tm

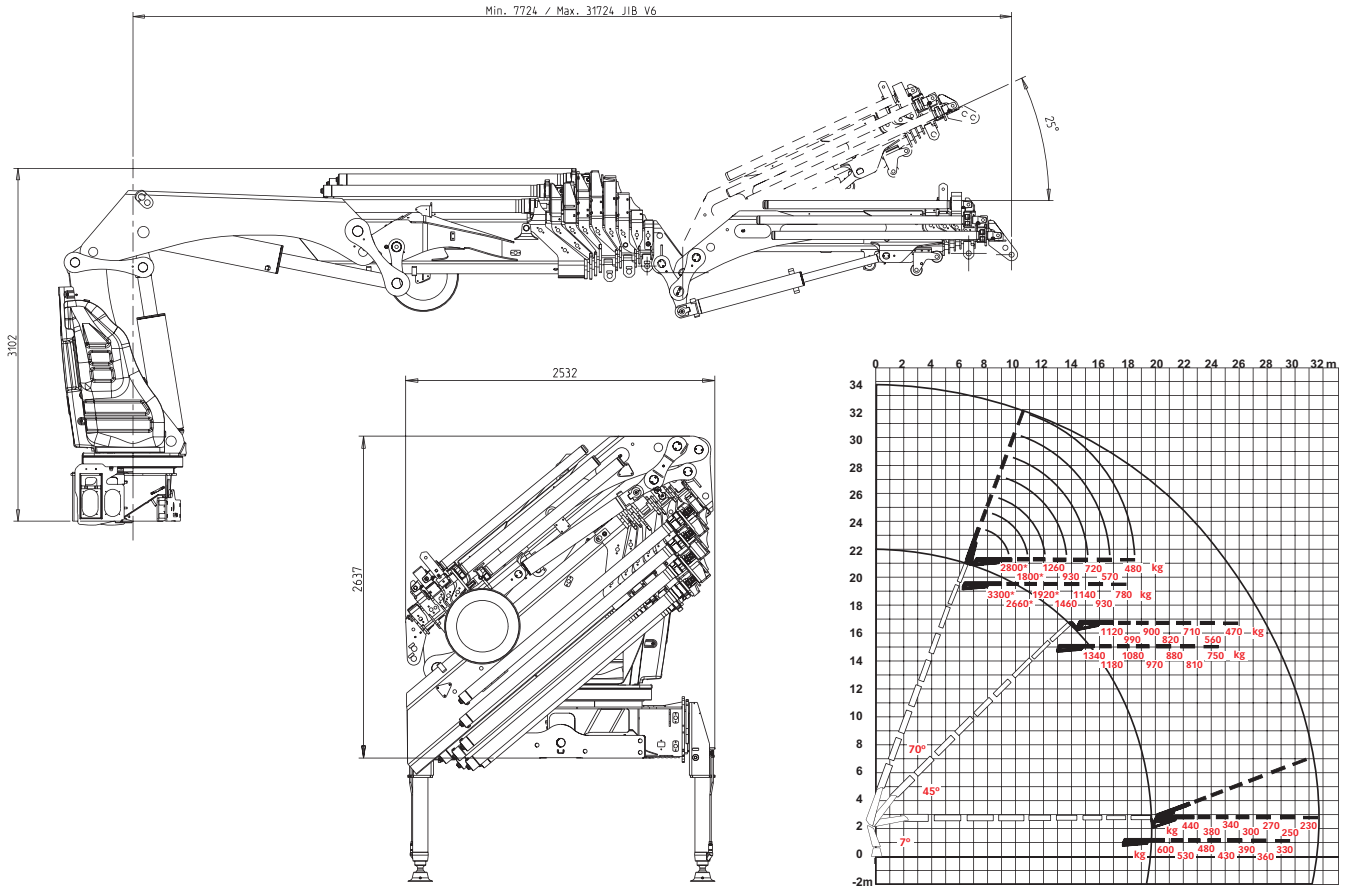


Hiab XS 544 Basic data

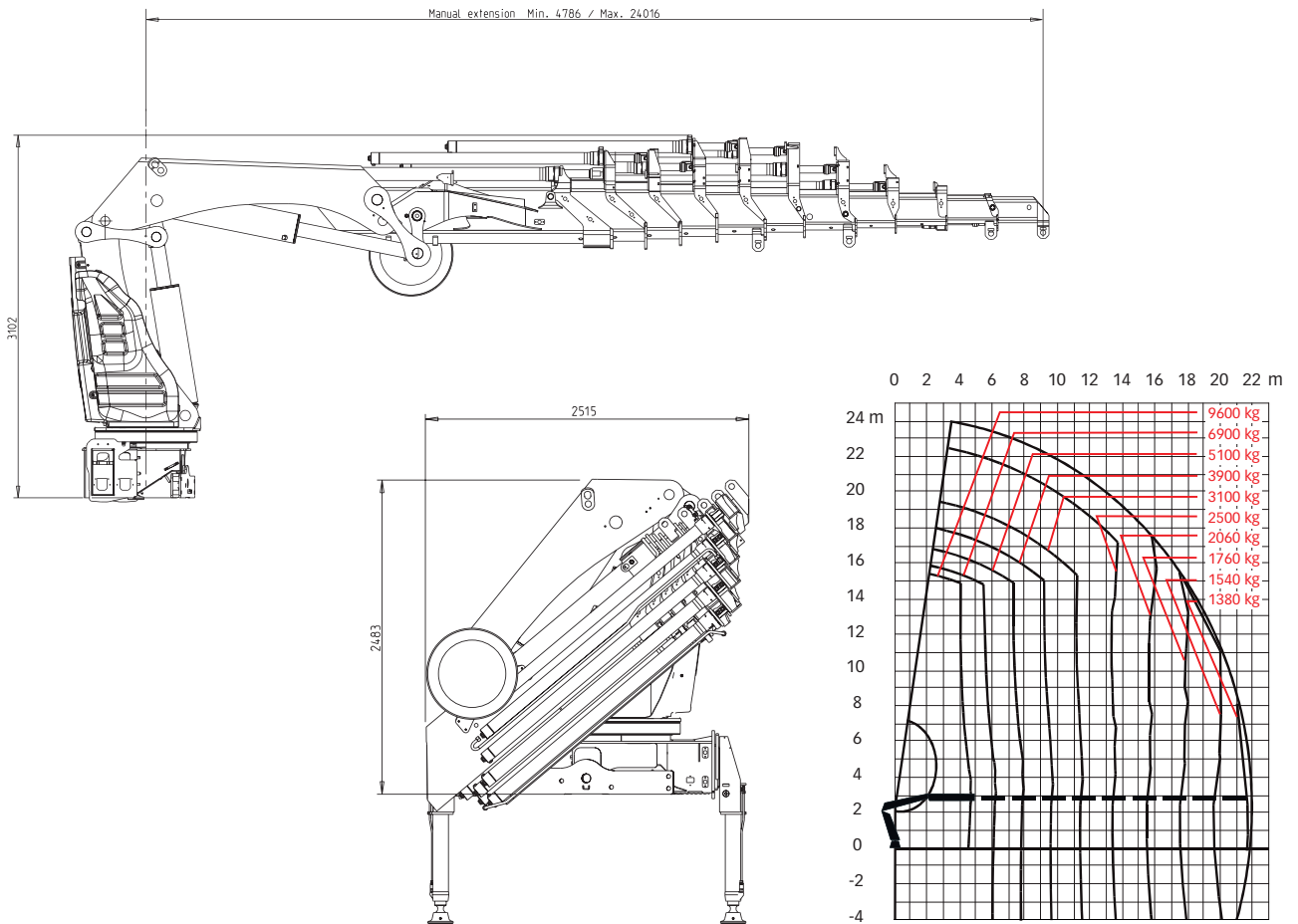
Technical data	E-6 HiPro	E-8 HiPro*	E-9 HiPro
Max. lifting capacity (kNm)	462	449	444
Outreach, hydraulic extensions (m)	15.4	19.6	21.8
Outreach, manual extensions (m)	-	-	24.0
Outreach, with jib (m)	27.6	31.7	-
Outreach / lifting capacity (m/kg)	4.4 / 10700	4.6 / 9900	4.7 / 9600
	5.9 / 7800	6.1 / 7200	6.2 / 6900
	7.6 / 5800	7.8 / 5300	7.9 / 5100
	9.4 / 4550	9.6 / 4100	9.7 / 3900
	11.2 / 3750	11.4 / 3300	11.5 / 3100
	13.2 / 3100	13.4 / 2680	13.5 / 2500
	15.3 / 2680	15.5 / 2240	15.6 / 2060
	-	17.5 / 1940	17.6 / 1760
	-	19.6 / 1720	19.7 / 1540
-	-	21.7 / 1380	
Outreach / lifting capacity, manual extension (m / kg)	-	-	24.0 / 800
Outreach / lifting capacity, with jib (m / kg)	18.7 / 1160	22.7 / 440	-
	20.0 / 1060	24.0 / 380	-
	21.3 / 960	25.3 / 340	-
	22.7 / 880	26.7 / 300	-
	24.2 / 820	28.2 / 270	-
	25.9 / 740	29.9 / 250	-
	27.6 / 700	31.6 / 230	-
Slewing angle (°)	endless	endless	endless
Height in folded position, with / without jib (mm)	2642 / 2490	2637 / 2490	2490
Width in folded position, with / without jib (mm)	2527 / 2515	2532 / 2515	2515
Width in folded position, with manual extension (mm)	-	-	2537
Installation space needed, with / without jib (mm)	1623 / 1456	1623 / 1502	1502
Installation space needed (including rotation space), with/without jib (mm)	1785 / 1618	1785 / 1664	1664
Weight, "standard" crane, without stabilisers (kg)	4885	5301	5482
Weight, jib (kg)	1324	1324	-
Weight, manual extension (kg)	-	-	100
Weight, stabiliser equipment (kg)	854 - 983	854 - 983	854 - 983

* Jib with Dual Capacity (JDC).

Hiab XS 544 E-8 Jib150X-6 JDC



Hiab XS 544 E-9 HiPro



Disclaimer. Hiab cranes have been built to meet the highest standards of safety and service life and have been thoroughly tested. Strength calculations for this model have been carried out in accordance with EN13001 in fatigue class S1. Cargotec's certified Quality Assurance System complies with ISO 9001. Some of the items in our literature may be extra equipment. Certain applications may require an official permit. We reserve the right to change technical specifications without prior notice. Hiab cranes produced for EU-countries are CE-marked and comply with the European Standard EN 12999.

Cargotec improves the efficiency of cargo flows by offering solutions for the loading and unloading of goods on land and at sea – wherever cargo is on the move. Cargotec's main daughter brands for cargo handling Hiab, Kalmar and MacGregor are global market leaders in their fields. www.cargotec.com

