

Hiab XS 855

Capacity 80 tm



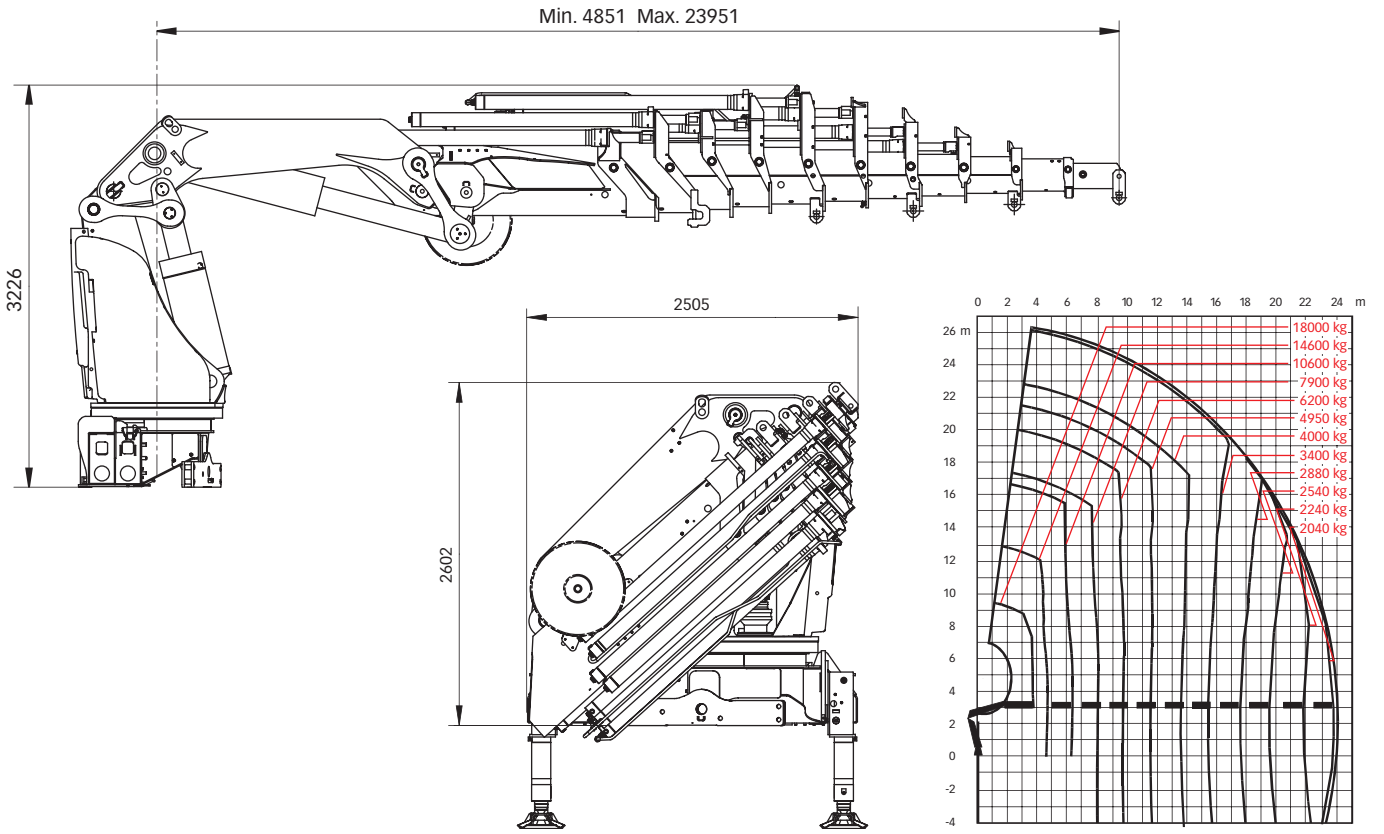
Hiab XS 855 Basic data

Technical data	EP-6 HiPro	E-6 HiPro	E-8 HiPro*	E-10 HiPro
Max. lifting capacity (kNm)	724	716	700	691
Outreach, hydraulic extensions (m)	16.5	15.3	19.6	24
Outreach, manual extensions (m)	-	-	-	-
Outreach, with jib (m)	-	25.1	29.2	-
Outreach / lifting capacity (m / kg)	3.9 / 18000	4.0 / 18000	3.8 / 18000	3.6 / 18000
	4.7 / 15700	4.4 / 16600	4.6 / 15500	4.8 / 14600
	6.2 / 11700	5.9 / 12100	6.1 / 11300	6.3 / 10600
	8.0 / 8800	7.6 / 9100	7.8 / 8400	8.0 / 7900
	9.9 / 7000	9.3 / 7300	9.5 / 6700	9.7 / 6200
	11.9 / 5700	11.2 / 5900	11.4 / 5300	11.6 / 4950
	14.1 / 4750	13.2 / 4950	13.4 / 4400	13.6 / 4000
	16.3 / 4100	15.1 / 4300	15.3 / 3750	15.5 / 3400
	-	-	17.4 / 3250	17.6 / 2880
	-	-	19.4 / 2900	19.6 / 2540
	-	-	-	21.8 / 2240
Outreach / lifting capacity, with jib (m / kg)	-	18.4 / 2340	22.5 / 1300	-
	-	19.4 / 2200	23.5 / 1240	-
	-	20.7 / 2020	24.8 / 1140	-
	-	21.9 / 1900	26.0 / 1080	-
	-	23.4 / 1760	27.5 / 1000	-
	-	24.9 / 1520**	29.0 / 920**	-
Slewing angle	∞	∞	∞	∞
Height in folded position (mm)	2587	2507	2507	2602
Width in folded position (mm)	2504	2500	2500	2505
Installation space needed (mm)	1757	1757	1857	1857
Weight, "standard" crane without stabilizers (kg)	6590	6830	7320	7700
Weight, jib (kg)	-	1390	1370	-
Weight, manual extension for jib (kg)	-	50	50	-
Frame attachments (kg)	-	-	-	-
Weight, stabilizer equipment (kg)	1220 - 1390	1220 - 1390	1220 - 1390	1220 - 1390

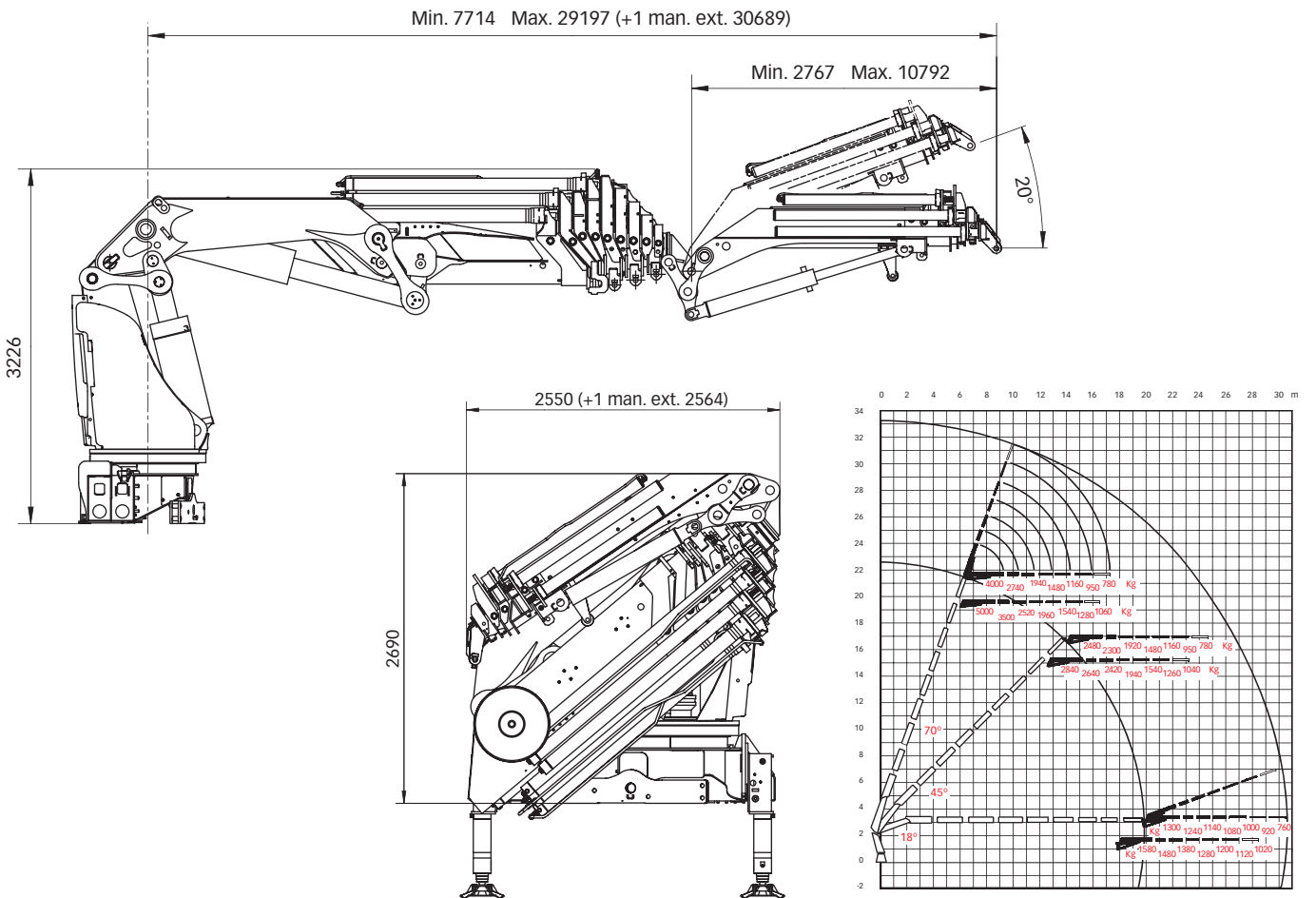
* Jib with Dual Capacity (JDC).

** With Jib + 1 man. extension.

Hiab XS 855 E-10 HiPro



Hiab XS 855 E-8 HiPro jib 145X-5 JDC



Disclaimer Hiab cranes have been built to meet the highest standards of safety and service life and have been thoroughly tested. Strength calculations for this model have been carried out in accordance with EN13001 in fatigue class S0. Cargotec's certified Quality Assurance System complies with ISO 9001. Some of the items in our literature may be extra equipment. Certain applications may require an official permit. We reserve the right to change technical specifications without prior notice. Hiab cranes produced for EU-countries are CE-marked and comply with the European Standard EN 12999.

Cargotec improves the efficiency of cargo flows on land and at sea - wherever cargo is on the move. Cargotec's daughter brands, Hiab, Kalmar and MacGregor are recognised leaders in cargo and load handling solutions around the world. Cargotec's global network is positioned close to customers and offers extensive services that ensure the continuous, reliable and sustainable performance of equipment. www.cargotec.com

