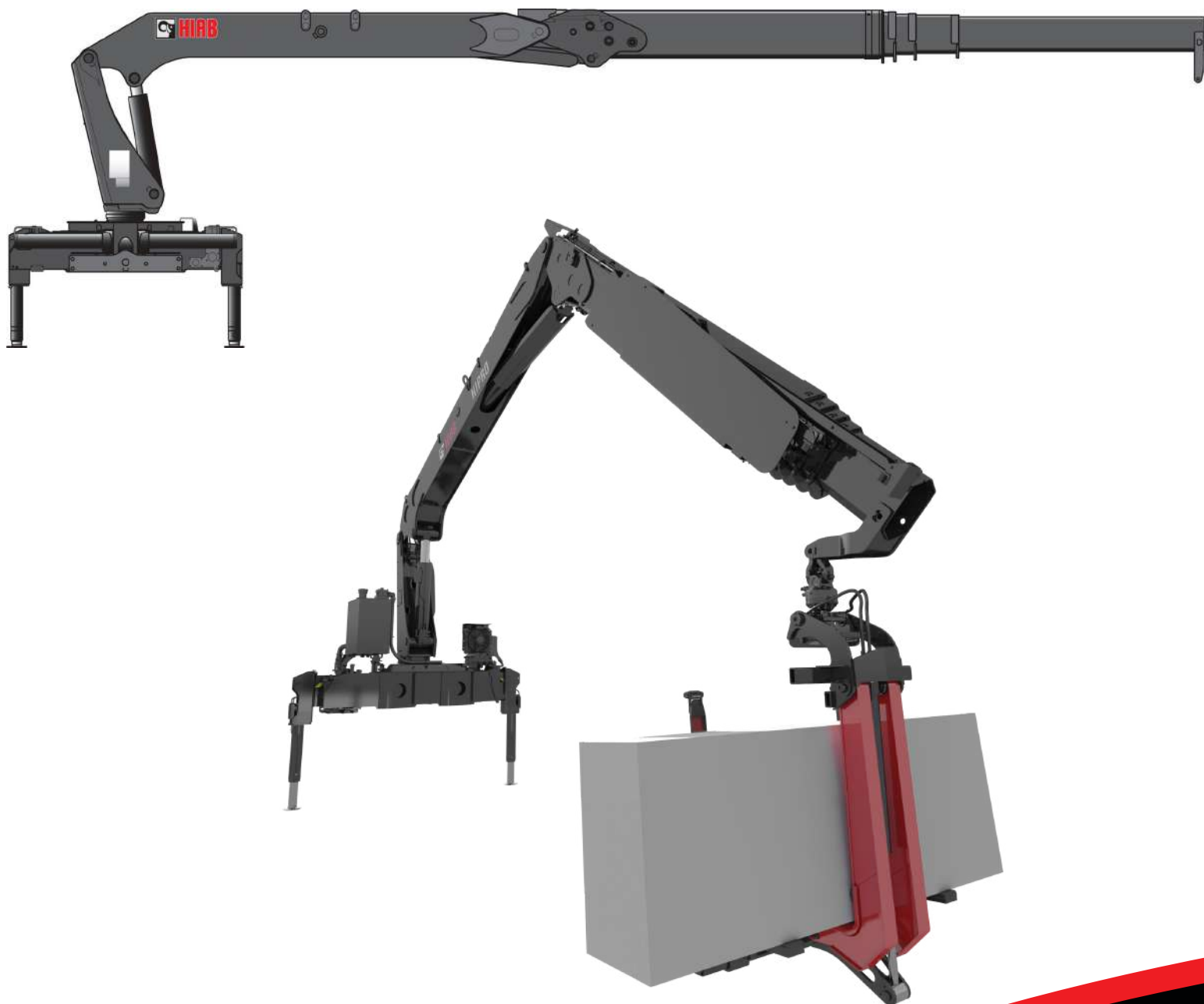


TECHNICAL SPECIFICATIONS  
**HIAB K-HIPRO 425**

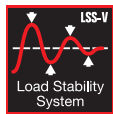
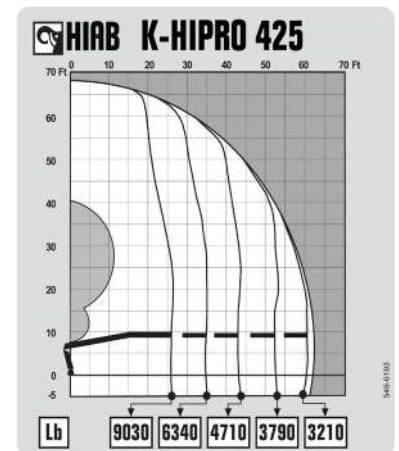
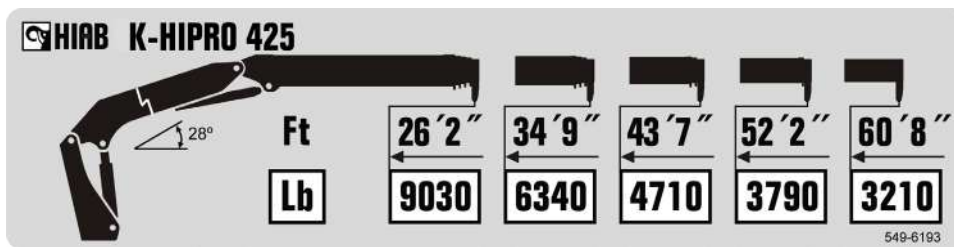


**BUILT TO PERFORM**



# HIAB K-HIPRO 425 BASIC DATA

TECHNICAL DATA	K-HIPRO 425-4
Max. lifting capacity (ft-lbs)	245 900
Outreach, hydraulic extensions (ft)	62' 8"
Outreach, manual extensions (ft)	-
Outreach, with jib (ft)	-
Outreach / lifting capacity (ft-lbs)	26' 2" - 9 030 34' 9" - 6 340 43' 7" - 4 710 52' 2" - 3 790 60' 8" - 3 210
Outreach / lifting capacity, with jib (ft-lbs)	-
Slewing angle (°)	460
Height in folded position (in)	100
Width in folded position (in)	98
Installation space needed (in)	42
Weight, "standard" crane without stabilizers (lbs)	10 540
Weight, stabilizer equipment (lbs)	1 380
Weight, jib (lbs)	-



**CTC** lets any operator perform challenging lifts quickly and safely. It calculates the optimal, simultaneous boom movements from point A to point B.

The **HiPro** control system provides **Automatic Speed Control (ASC)**, which reduces the dynamic load on the crane's steel structure. ASC reduces vertical speed when operating at 80-100% of maximum capacity, which prevents the operator from making rapid movements when the load is high in the air. This, combined with the HiPro overload protection feature, means that the Hiab HiPro control system sets the bar for both safety and performance.

Part of HiPro control, the **Load Stability System** for vertical movements (**LSS-V**) automatically compensates for excessive lever actions, providing a smooth return to where lever movement stopped. This makes the crane more efficient and protects against swinging loads, which could otherwise damage the worksite or crane.

**HiConnect** remote connectivity enables simpler and better service that improves fleet utilization and lowers cost of ownership. It provides a comprehensive fleet overview and lets us provide operator assistance.

**Disclaimer.** Hiab cranes have been built to meet the highest standards of safety and service life and have been thoroughly tested. Strength calculations for this model have been carried out in accordance with EN13001 in fatigue class S2. Cargotec's certified Quality Assurance System complies with ISO 9001. Some of the items in our literature may be extra equipment. Certain applications may require an official permit. We reserve the right to change technical specifications without prior notice. Hiab cranes produced for EU-countries are CE marked and comply with the European Standard EN12999. **Hiab** is the world's leading provider of on-road load handling equipment. Our high performance product range includes loader cranes, forestry and recycling cranes, demountables, truck mounted forklifts and tail lifts. We aim to set the industry benchmark for customer satisfaction by providing products and services that meet customer needs globally.

www.hiab.us.com  
Hiab is part of Cargotec.  
www.cargotec.com

Hiab USA Inc  
12233 Williams Road  
Perrysburg, OH 43551 USA  
tel. +419 482 6000  
fax. +419 482 6001

