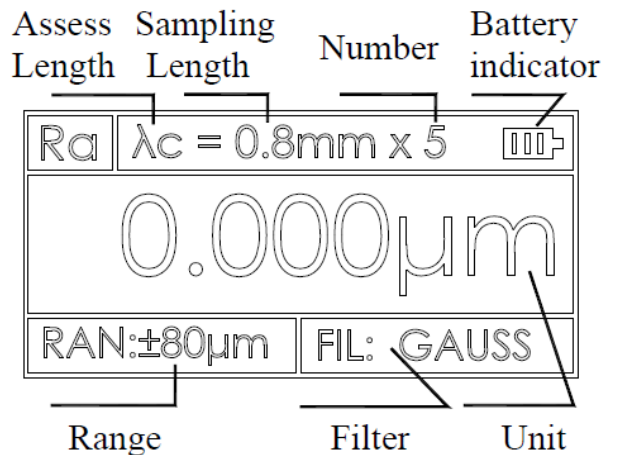
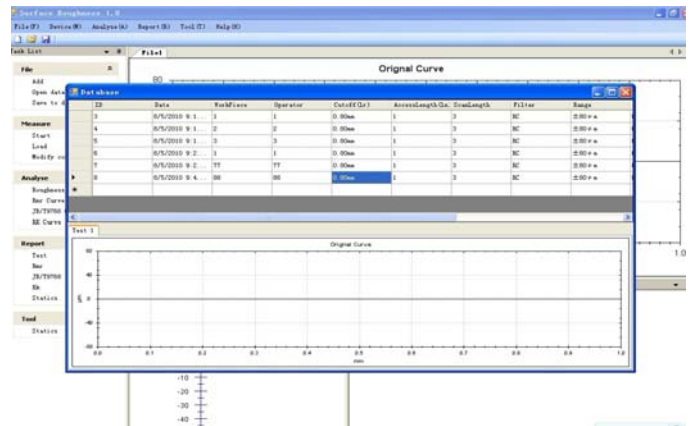


SRT-300 Surface Roughness Tester



Main feature:

- ◆ Electromechanical integration design, small volume, light weight, easy to use;
- ◆ Using DSP chip to control and data processing, high speed, low power consumption;
- ◆ 128 x 64 LED dot matrix display, digital / graphic display; highlight no perspective;
- ◆ Intuitive and rich display information, can display all the parameters and graphics;
- ◆ Compatible with ISO, DIN, ANSI, JIS national standards;
- ◆ Residual quantity icon, prompting the user to charge;
- ◆ Continuous working time: more than 20 hours.
- ◆ Real-time clock settings and display, convenient data recording and storage.
- ◆ With automatic dormancy, automatic shutdown and power saving function
- ◆ Reliable control motor to go dead circuit and software design
- ◆ Measurement information display, menu prompt information, false information and switch machine and other tips that information;
- ◆ Can be connected to a computer and printer;
- ◆ Optional different sensor, measuring platform, mini printer, extension rod and other accessories.
- ◆ Plastic shell, inspired by “TRANSFORMERS” stylish design, portable, high reliability.
- ◆ Optional bluetooth function.



Specification list:

testing parameters	Ra, Rz, Rq, Rt, Rp, Rv, R3z, R3y, RzJIS, Rsk, Rku, Rsm, Rmr, Rx;
measuring range (um)	Ra: 0.005-16.000 Rz: 0.02-160.00
sample length (mm)	0.25, 0.80, 2.50
evaluation length(mm)	(1-5)L
maximum drive stroke	17.5mm/0.7inch
indication accuracy	0.001
indication error	±(7-10)%
variability	<6%
data storage	100 groups
power	rechargeable li-battery
working temperature	-20℃ ~ 40℃
relative humidity	<90%
size	158mmx64mmx46mm
weight of host	300g

Standard configuration:

No.	Name	Q'ty
1	host	1
2	standard sensor	1
3	calibration block and bracket	1
4	bracket	1
5	charger	1
6	adjustable support	1
7	operating manual	1
8	warranty card	1
9	certificate of approval	1
10	instrument case	1
11	USB cable	1
12	software	1



Extension rod. Used to extend length of sensor when test deep hole (50mm)



Right angle extension rod /measuring mechanism



standard sensor, plane& shaft& inner surface of hole>6mm, depth<22mm



small hole sensor, cylindrical& plane &inner surface of hole>2mm, depth<9mm



curved surface sensor for cylindrical, curvature radius>3mm, work with plate



Groove sensor, measure surface in groove with width ≥2.5mm, depth ≤3mm, and on steps with height ≤3mm



deep grove sensor, cylindrical& plane& grove width>3mm, depth<10mm work with plate



Roughness comparison block
High quality comparison block of roughness tester
Strict anti-trust treatment process 30 comparison block/set



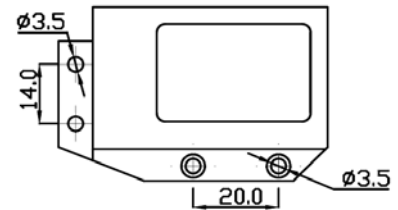
External Mini printer



Metal working plate

elevating, convenient and stable for test process
 Granite platform size: 260 * 180 * 12 mm
 Vertical height: 200± 1 mm
 Weight: 15kg

Connect plate size:



Marble working plate

elevating, V groove, high accuracy to test tiny work piece
 Granite platform flatness: 00 grade | plane tolerance value 3 μm
 Granite platform size: 400 * 250 * 70 mm
 Vertical height: 300± 1 mm
 Lifting hysteresis error: hand wheel rotation 1/6 circle
 Weight: 40 kg
 Connect plate size: same

