

# SMA TYPE

– Block Type –



## part number structure

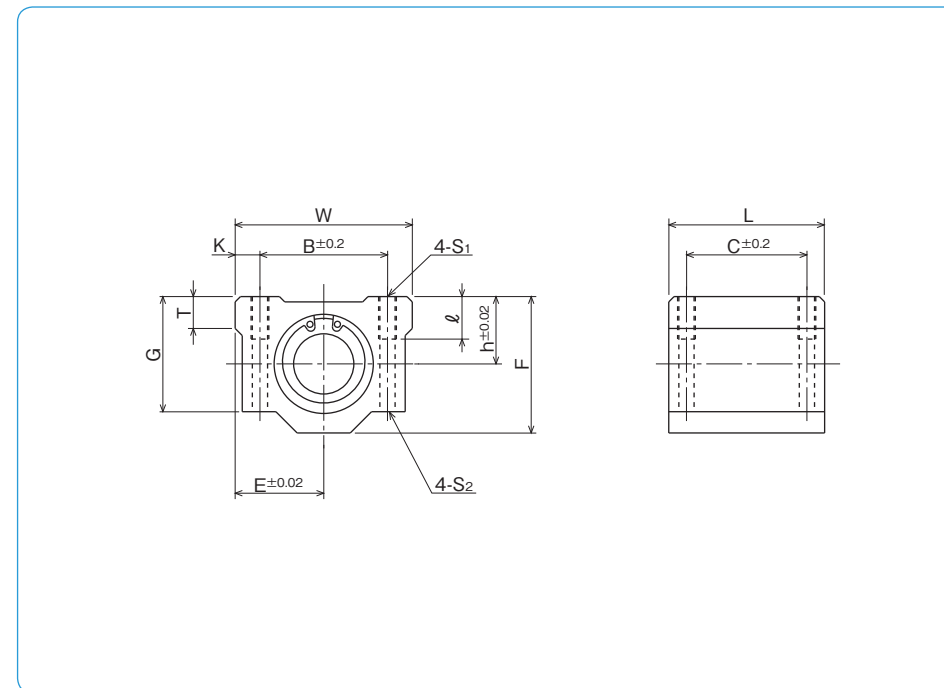
example **SMSA 25 G UU**

specification  
**SMA**: standard  
**SMSA**: anti-corrosion

seal  
**blank**: without seal  
**UU**: seals on both sides

retainer material  
**blank**: standard/steel  
           anti-corrosion/stainless steel  
**G**: resin

inner contact diameter



part number	inner contact diameter		outer dimensions							major dimensions	
	mm	tolerance μm	h mm	E mm	W mm	L mm	F mm	G mm	T mm		
SMA 3GUU	3		5	8	16	13	10	8	—		
SMA 4GUU	4	0	5.5	8.5	17	15	11	9	—		
SMA 5GUU	5	- 8	7	11	22	18	14	11	—		
SMA 6GUU	6		9	15	30	25	18	15	6		
SMA 8GUU	8		11	17	34	30	22	18	6		
SMA 10GUU	10	0	13	20	40	35	26	21	8		
SMA 12GUU	12	- 9	15	21	42	36	28	24	8		
SMA 13GUU	13		15	22	44	39	30	24.5	8		
SMA 16GUU	16		19	25	50	44	38.5	32.5	9		
SMA 20GUU	20		21	27	54	50	41	35	11		
SMA 25GUU	25	0	26	38	76	67	51.5	42	12		
SMA 30GUU	30	-10	30	39	78	72	59.5	49	15		
SMA 35GUU	35		34	45	90	80	68	54	18		
SMA 40GUU	40	0	40	51	102	90	78	62	20		
SMA 50GUU	50	-12	52	61	122	110	102	80	25		
SMA 60GUU	60	0/-15	58	66	132	122	114	94	30		

mounting dimensions						basic load rating		* mass g	shaft diameter mm
B mm	C mm	K mm	S <sub>1</sub>	ℓ mm	S <sub>2</sub> mm	dynamic C N	static Co N		
11	8	2.5	M2	—	—	69	105	5	3
12	10	2.5	M3	—	—	88	127	7	4
16	12	3	M3	—	—	167	206	14	5
20	15	5	M4	8	3.4	206	265	34	6
24	18	5	M4	8	3.4	274	392	52	8
28	21	6	M5	12	4.3	372	549	92	10
30.5	26	5.75	M5	12	4.3	510	784	102	12
33	26	5.5	M5	12	4.3	510	784	120	13
36	34	7	M5	12	4.3	774	1,180	200	16
40	40	7	M6	12	5.2	882	1,370	255	20
54	50	11	M8	18	7	980	1,570	600	25
58	58	10	M8	18	7	1,570	2,740	735	30
70	60	10	M8	18	7	1,670	3,140	1,100	35
80	60	11	M10	25	8.7	2,160	4,020	1,590	40
100	80	11	M10	25	8.7	3,820	7,940	3,340	50
108	90	12	M12	25	10.7	4,700	10,000	4,270	60

\* Mass of resin retainer type

1N=0.102kgf

# SMA-W TYPE

– Double-Wide Block Type –



## part number structure

example **SMSA 25 G W UU**

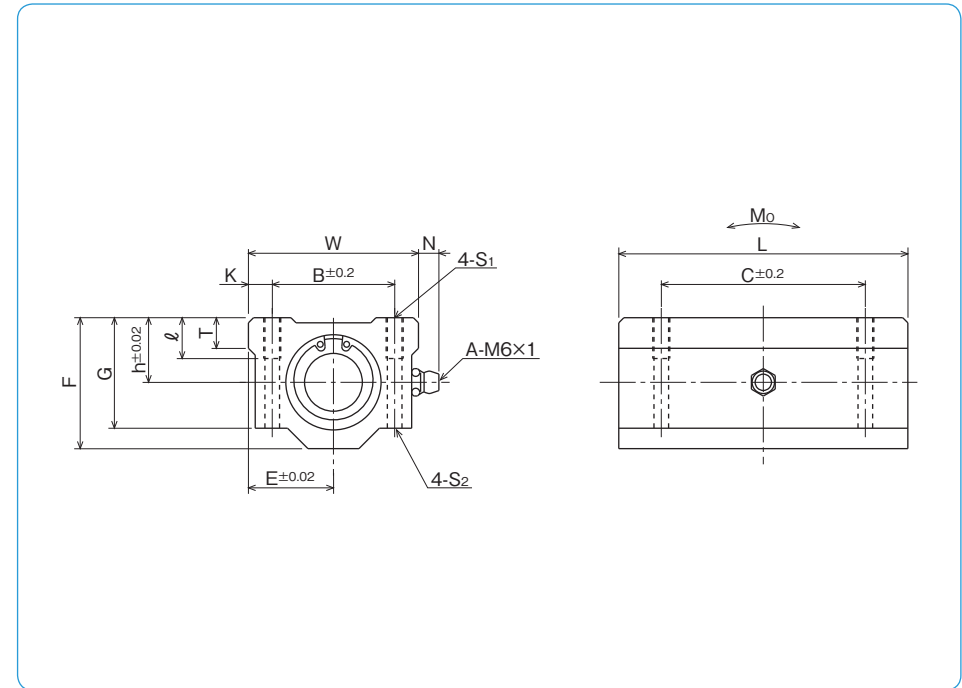
specification  
**SMA**: standard  
**SMSA**: anti-corrosion

inner contact diameter

retainer material  
**blank**: standard/steel  
**G**: resin

seal  
**blank**: without seal  
**UU**: seals on both sides

double-wide type



part number	inner contact diameter		major dimensions							
	mm	tolerance	h mm	E mm	W mm	outer dimensions				
		μm				L mm	F mm	G mm	T mm	N mm
SMA 3GWUU	3	0	5	8	16	23	10	8	—	—
SMA 4GWUU	4	-8	5.5	8.5	17	27	11	9	—	—
SMA 5GWUU	5		7	11	22	33	14	11	—	—
SMA 6GWUU	6		9	15	30	48	18	15	6	7
SMA 8GWUU	8		11	17	34	58	22	18	6	7
SMA 10GWUU	10	0	13	20	40	68	26	21	8	7
SMA 12GWUU	12	-9	15	21	42	70	28	24	8	6.5
SMA 13GWUU	13		15	22	44	75	30	24.5	8	6.5
SMA 16GWUU	16		19	25	50	85	38.5	32.5	9	6
SMA 20GWUU	20		21	27	54	96	41	35	11	7
SMA 25GWUU	25	0	26	38	76	130	51.5	42	12	4
SMA 30GWUU	30	-10	30	39	78	140	59.5	49	15	5
SMA 35GWUU	35		34	45	90	155	68	54	18	5.5
SMA 40GWUU	40	0	40	51	102	175	78	62	20	5
SMA 50GWUU	50	-12	52	61	122	215	102	80	25	5
SMA 60GWUU	60	0/-15	58	66	132	240	114	94	30	5

mounting dimensions						basic load rating		allowable static moment	* mass	shaft diameter
B mm	C mm	K mm	S <sub>1</sub>	ℓ mm	S <sub>2</sub> mm	C N	Co N			
11	16	2.5	M2	—	—	108	206	0.49	10	3
12	20	2.5	M3	—	—	137	255	0.72	13	4
16	25	3	M3	—	—	265	412	1.54	27	5
20	36	5	M4	8	3.4	323	530	2.18	63	6
24	42	5	M4	8	3.4	431	784	4.31	102	8
28	46	6	M5	12	4.3	588	1,100	7.24	180	10
30.5	50	5.75	M5	12	4.3	813	1,570	10.9	205	12
33	50	5.5	M5	12	4.3	813	1,570	11.6	240	13
36	60	7	M5	12	4.3	1,230	2,350	19.7	400	16
40	70	7	M6	12	5.2	1,400	2,740	26.8	570	20
54	100	11	M8	18	7	1,560	3,140	43.4	1,200	25
58	110	10	M8	18	7	2,490	5,490	82.8	1,480	30
70	120	10	M8	18	7	2,650	6,270	110	2,200	35
80	140	11	M10	25	8.7	3,430	8,040	147	3,200	40
100	160	11	M10	25	8.7	6,080	15,900	397	6,700	50
108	180	12	M12	25	10.7	7,550	20,000	530	8,560	60

\* Mass of resin retainer type

1N≒0.102kgf 1N · m≒0.102kgf · m

# AK TYPE

– Compact Block Type –



## part number structure

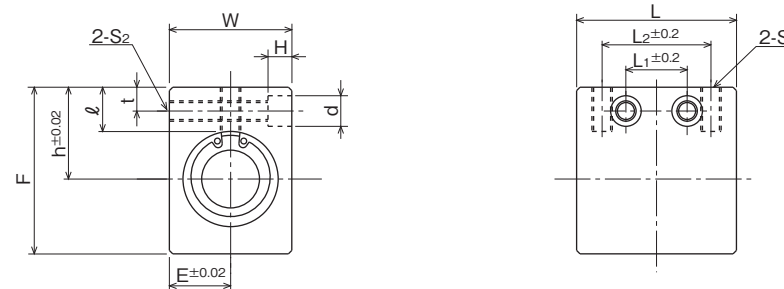
example **AKS 25 G UU**

specification  
**AK:** standard  
**AKS:** anti-corrosion

seal  
**blank:** without seal  
**UU:** seals on both sides

retainer material  
**blank:** standard/steel  
 anti-corrosion/stainless steel  
**G:** resin

inner contact diameter



part number	inner contact diameter		outer dimensions				major dimensions		
	mm	tolerance μm	h mm	E mm	W mm	L mm	F mm	L <sub>2</sub> mm	S <sub>1</sub>
<b>AK 6GUU</b>	6	0 - 9	14	8	16	27	22	18	M4
<b>AK 8GUU</b>	8		16	10	20	32	26	20	M5
<b>AK10GUU</b>	10		19	13	26	39	32	27	M6
<b>AK12GUU</b>	12		20	14	28	40	34	27	M6
<b>AK13GUU</b>	13		25	15	30	42	43	28	M6
<b>AK16GUU</b>	16		27	18	36	47	49	32	M6
<b>AK20GUU</b>	20	0 -10	31	21	42	52	54	36	M8
<b>AK25GUU</b>	25		37	26	52	69	65	42	M10
<b>AK30GUU</b>	30		40	29	58	74	71	44	M10

mounting dimensions						basic load rating		* mass g	shaft diameter mm
l mm	L <sub>1</sub> mm	t mm	S <sub>2</sub>	d mm	H mm	dynamic C N	static Co N		
8	9	5	M4	6	5	206	265	21.5	6
8.5	10	5	M4	6	5	274	392	40	8
9.5	15	6	M5	8	6	372	549	80	10
9.5	15	6	M5	8	6	510	784	90	12
13.5	16	7	M6	9	7	510	784	132	13
13	18	7	M6	9	7	774	1,180	204	16
15	18	8	M8	11	8	882	1,370	272	20
17	22	9	M10	14	10	980	1,570	574	25
17.5	22	9	M10	14	10	1,570	2,740	710	30

\* Mass of resin retainer type

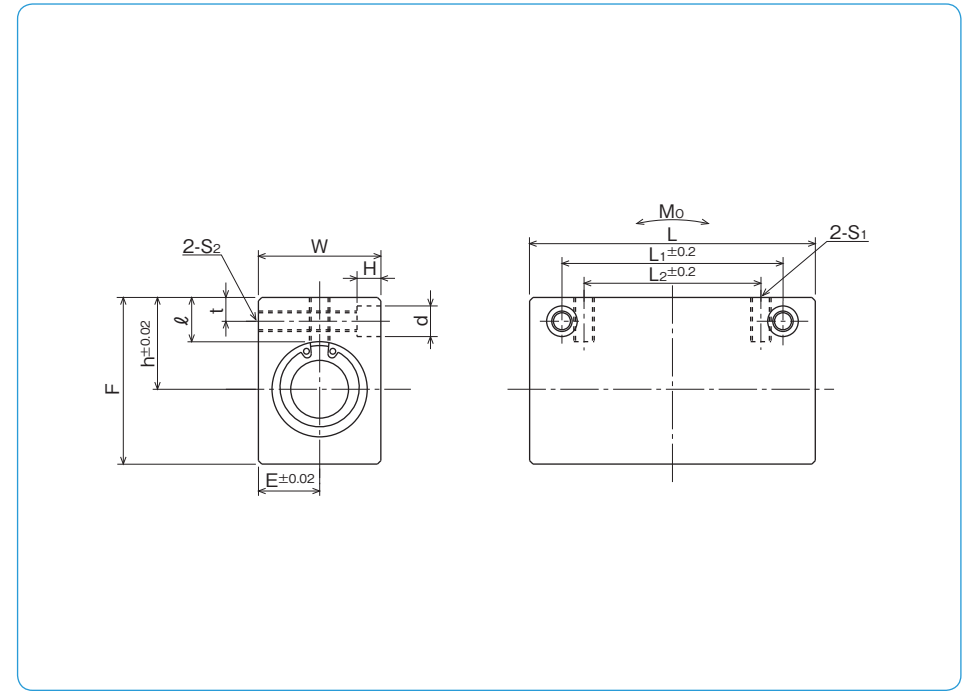
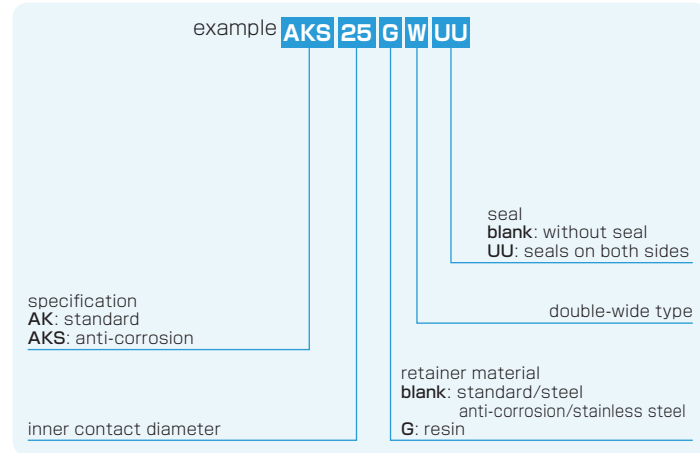
1N=0.102kgf

# AK-W TYPE

– Double-Wide Compact Block Type –



## part number structure



part number	inner contact diameter		outer dimensions				major dimensions		
	mm	tolerance μm	h mm	E mm	W mm	L mm	F mm	L <sub>2</sub> mm	S <sub>1</sub>
AK 6GWUU	6	0 - 9	14	8	16	46	22	20	M4
AK 8GWUU	8		16	10	20	56	26	30	M5
AK10GWUU	10		19	13	26	68	32	36	M6
AK12GWUU	12		20	14	28	70	34	36	M6
AK13GWUU	13		25	15	30	74	43	42	M6
AK16GWUU	16		27	18	36	84	49	52	M6
AK20GWUU	20	0 -10	31	21	42	94	54	58	M8
AK25GWUU	25		37	26	52	128	65	80	M10
AK30GWUU	30		40	29	58	138	71	90	M10

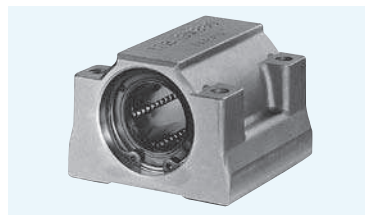
mounting dimensions						basic load rating		allowable static moment Mo N·m	* mass g	shaft diameter mm
ℓ mm	L <sub>1</sub> mm	t mm	S <sub>2</sub>	d mm	H mm	dynamic C N	static Co N			
8	30	5	M4	6	5	323	530	2.18	40	6
8.5	42	5	M4	6	5	431	784	4.31	75	8
9.5	50	6	M5	8	6	588	1,100	7.24	150	10
9.5	50	6	M5	8	6	813	1,570	10.9	168	12
13.5	55	7	M6	9	7	813	1,570	11.6	248	13
13	65	7	M6	9	7	1,230	2,350	19.7	383	16
15	70	8	M8	11	8	1,400	2,740	26.8	520	20
17	100	9	M10	14	10	1,560	3,140	43.4	1,120	25
17.5	110	9	M10	14	10	2,490	5,490	82.8	1,384	30

\* Mass of resin retainer type

1N≐0.102kgf 1N·m≐0.102kgf·m

# SMB TYPE

– Block Type –



## part number structure

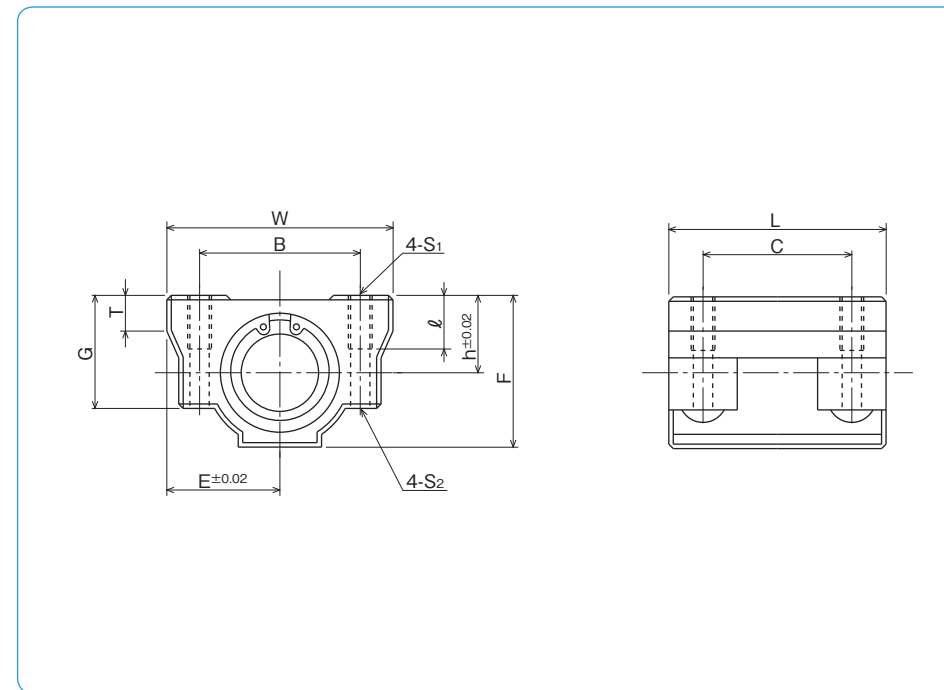
example **SMSB 25 G UU**

specification  
**SMB**: standard  
**SMSB**: anti-corrosion

seal  
**blank**: without seal  
**UU**: seals on both sides

retainer material  
**blank**: standard/steel  
 anti-corrosion/stainless steel  
**G**: resin

inner contact diameter



part number	inner contact diameter		outer dimensions							major dimensions	
	mm	tolerance μm	h mm	E mm	W mm	L mm	F mm	G mm	T mm		
<b>SMB13GUU</b>	13	0	16	22	44	39	31	22	8		
<b>SMB16GUU</b>	16	- 9	19	25	50	49	37	28	9		
<b>SMB20GUU</b>	20	0	21	27	54	55	41	31	11		
<b>SMB25GUU</b>	25	-10	26	38	76	73	51	38	12		
<b>SMB30GUU</b>	30	0	30	39	78	80	57	45	15		
<b>SMB40GUU</b>	40	0/-12	40	51	102	96	75	59	22		

mounting dimensions					basic load rating		* mass g	shaft diameter mm
B mm	C mm	S <sub>1</sub>	ℓ mm	S <sub>2</sub> mm	dynamic C N	static Co N		
33	26	M5	10	4.3	510	784	120	13
36	34	M5	12	4.3	774	1,180	170	16
40	40	M6	12	5.1	882	1,370	210	20
54	50	M8	18	6.8	980	1,570	500	25
58	58	M8	18	6.8	1,570	2,740	600	30
80	60	M10	25	8.6	2,160	4,020	1,200	40

\* Mass of resin retainer type

1N≒0.102kgf

# SMP TYPE

– Pillow Block Type –



## part number structure

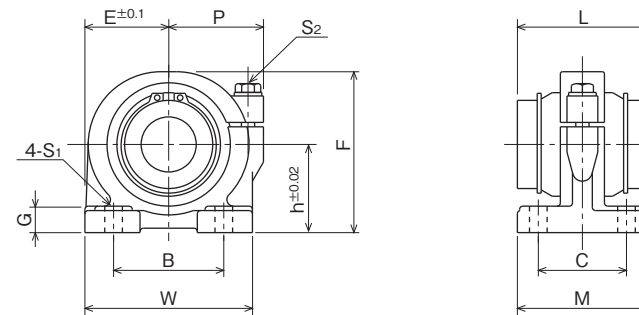
example **SMP 25 G UU**

SMP type

inner contact diameter

seal  
blank: without seal  
UU: seals on both sides

retainer material  
blank: steel  
G: resin



part number	inner contact diameter		outer dimensions							major dimensions	
	mm	tolerance μm	h mm	E mm	W mm	L mm	F mm	G mm	M mm		
	<b>SMP13GUU</b>	13	0	25	25	50	32	46	8	36	
<b>SMP16GUU</b>	16	- 9	29	27.5	55	37	53	10	40		
<b>SMP20GUU</b>	20	0	34	32.5	65	42	62	12	48		
<b>SMP25GUU</b>	25	-10	40	38	76	59	73	12	59		
<b>SMP30GUU</b>	30	0	45	42.5	85	64	84	15	69		
<b>SMP35GUU</b>	35	0	50	49	98	70	94	15	76		
<b>SMP40GUU</b>	40	-12	60	62	124	80	112	18	86		
<b>SMP50GUU</b>	50	-12	70	72	144	100	134	20	105		
<b>SMP60GUU</b>	60	0/-15	82	84.5	169	110	154	23	115		

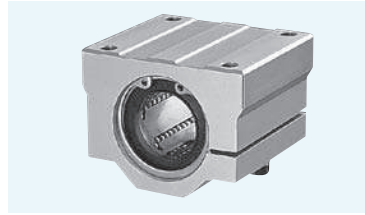
P mm	mounting dimensions			adjustment screw size S <sub>2</sub>	basic load rating		* mass g	shaft diameter mm
	B mm	C mm	S <sub>1</sub> mm		dynamic C N	static C <sub>0</sub> N		
30	30	26	7 (M5)	M5	510	784	270	13
32	35	29	7 (M5)	M5	774	1,180	380	16
37	40	35	8 (M6)	M6	882	1,370	680	20
43	50	40	8 (M6)	M6	980	1,570	1,000	25
49	58	46	10 (M8)	M8	1,570	2,740	1,400	30
58	62	53	12 (M10)	M10	1,670	3,140	2,100	35
68	76	64	12 (M10)	M10	2,160	4,020	3,700	40
80	100	70	14 (M12)	M12	3,820	7,940	6,100	50
88	115	80	14 (M12)	M12	4,700	10,000	8,700	60

\* Mass of resin retainer type

1N=0.102kgf

# SMJ TYPE

– Clearance Adjustable Type –



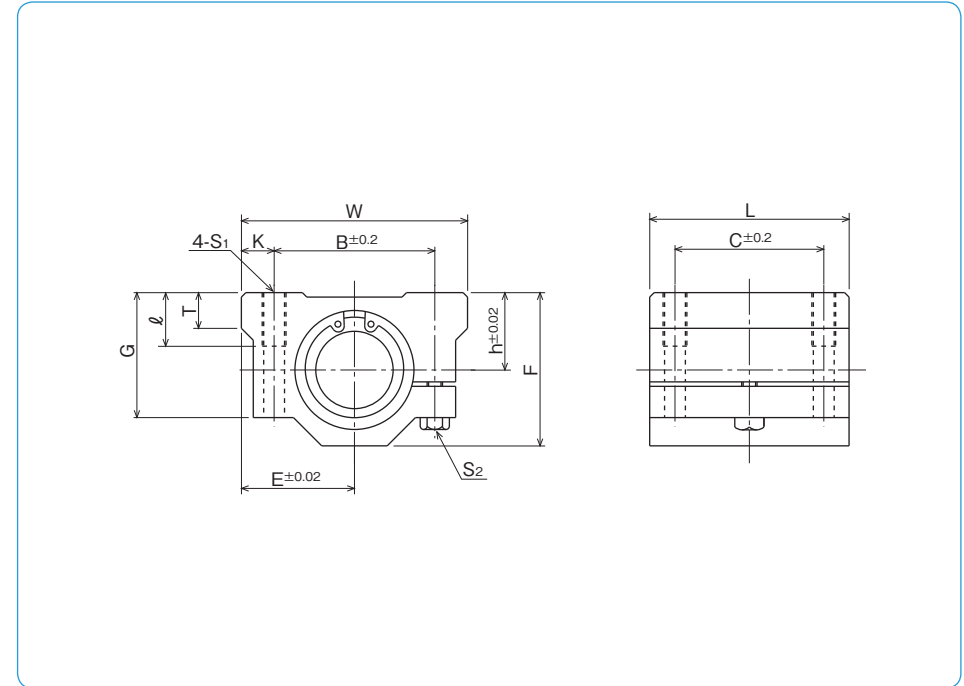
## part number structure

example **SMSJ 25 G UU**

specification SMJ: standard SMSJ: anti-corrosion	inner contact diameter	retainer material blank: standard/steel* anti-corrosion/stainless steel* G: resin	seal blank: without seal UU: seals on both sides
--	------------------------	--	--

\*Size 10 is provided with resin retainer type only.

part number	inner contact diameter mm	major dimensions							
		h mm	E mm	outer dimensions			G mm	T mm	B mm
				W mm	L mm	F mm			
SMJ10GUU	10	13	20	40	35	26	21	8	28
SMJ12GUU	12	15	21	42	36	28	24	8	30.5
SMJ13GUU	13	15	22	44	39	30	24.5	8	33
SMJ16GUU	16	19	25	50	44	38.5	32.5	9	36
SMJ20GUU	20	21	27	54	50	41	35	11	40
SMJ25GUU	25	26	38	76	67	51.5	42	12	54
SMJ30GUU	30	30	39	78	72	59.5	49	15	58
SMJ35GUU	35	34	45	90	80	68	54	18	70
SMJ40GUU	40	40	51	102	90	78	62	20	80
SMJ50GUU	50	52	61	122	110	102	80	25	100
SMJ60GUU	60	58	66	132	122	114	94	30	108



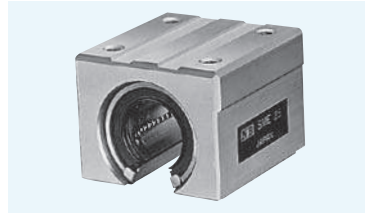
mounting dimensions				adjustment screw size S <sub>2</sub>	basic load rating		* mass g	shaft diameter mm
C mm	K mm	S <sub>1</sub>	ℓ mm		dynamic C N	static C <sub>0</sub> N		
21	6	M5	12	M4	372	549	92	10
26	5.75	M5	12	M4	510	784	102	12
26	5.5	M5	12	M4	510	784	120	13
34	7	M5	12	M4	774	1,180	200	16
40	7	M6	12	M5	882	1,370	255	20
50	11	M8	18	M6	980	1,570	600	25
58	10	M8	18	M6	1,570	2,740	735	30
60	10	M8	18	M6	1,670	3,140	1,100	35
60	11	M10	25	M8	2,160	4,020	1,590	40
80	11	M10	25	M8	3,820	7,940	3,340	50
90	12	M12	25	M10	4,700	10,000	4,270	60

\* Mass of resin retainer type

1N=0.102kgf

# SME TYPE

— Open Block Type —



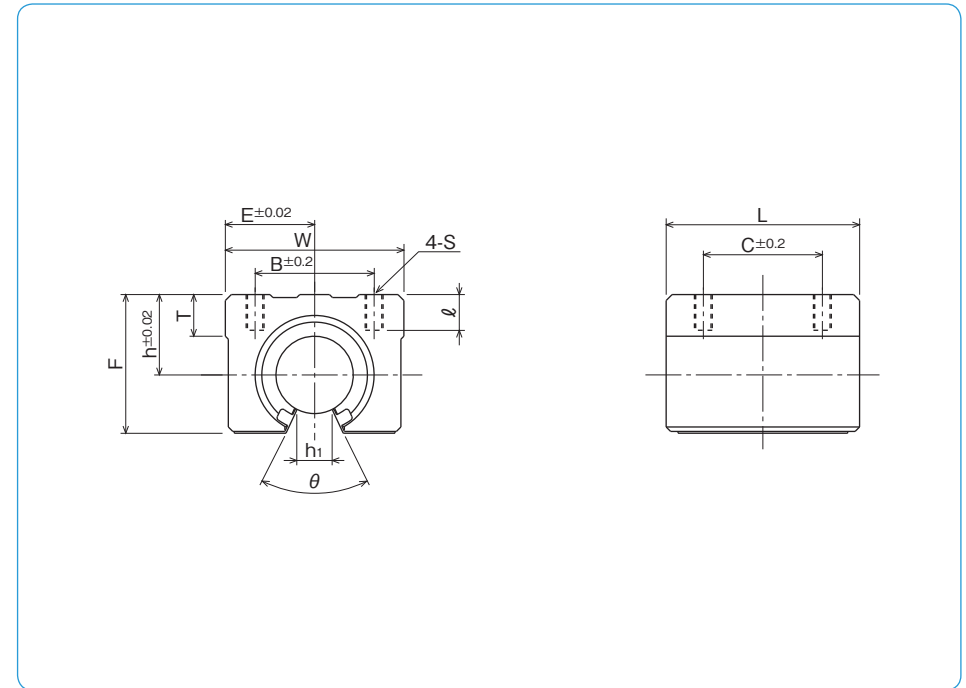
## part number structure

example **SMSE 25 G UU**

specification SME: standard SMSE: anti-corrosion	inner contact diameter	retainer material blank: standard/steel* anti-corrosion/stainless steel* G: resin	seal blank: without seal UU: seals on both sides
--	------------------------	--	--

\*Size 10 is provided with resin retainer type only.

part number	inner contact diameter mm	outer dimensions			major dimensions				
		h mm	E mm	W mm	L mm	F mm	T mm	h <sub>1</sub> mm	θ
SME10GUU	10	15	18	36	32	24	7	6	80°
SME13GUU	13	17	20	40	39	28	8	8.5	80°
SME16GUU	16	20	22.5	45	45	33	9	10	80°
SME20GUU	20	23	24	48	50	39	11	10	60°
SME25GUU	25	27	30	60	65	47	14	11.5	50°
SME30GUU	30	33	35	70	70	56	15	14	50°
SME35GUU	35	37	40	80	80	63	18	16	50°
SME40GUU	40	42	45	90	90	72	20	19	50°
SME50GUU	50	53	60	120	110	92	25	23	50°



B mm	mounting dimensions			basic load rating		* mass g	shaft diameter mm
	C mm	S	ℓ mm	dynamic C N	static Co N		
25	20	M5	10	372	549	65	10
28	26	M5	10	510	784	100	13
32	30	M5	12	774	1,180	150	16
35	35	M6	12	882	1,370	200	20
40	40	M6	12	980	1,570	450	25
50	50	M8	18	1,570	2,740	630	30
55	55	M8	18	1,670	3,140	925	35
65	65	M10	20	2,160	4,020	1,330	40
94	80	M10	20	3,820	7,940	3,000	50

\* Mass of resin retainer type

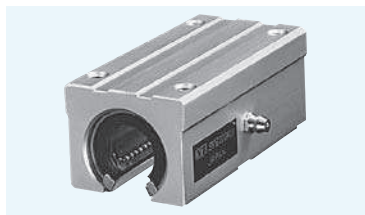
1N=0.102kgf

SLIDE BUSH

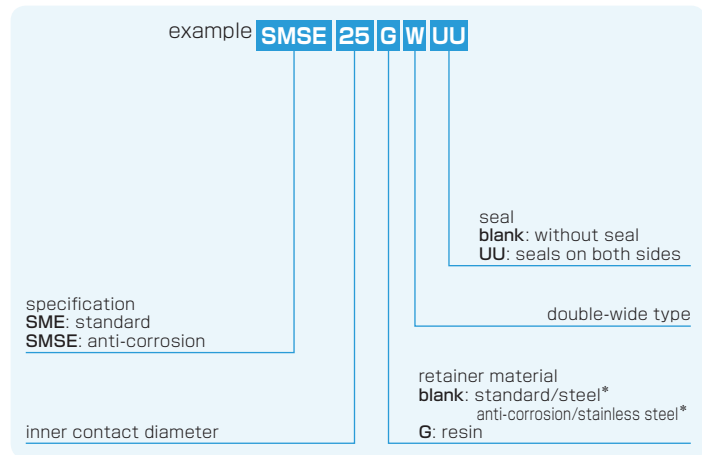


# SME-W TYPE

— Double-wide Open Block Type —

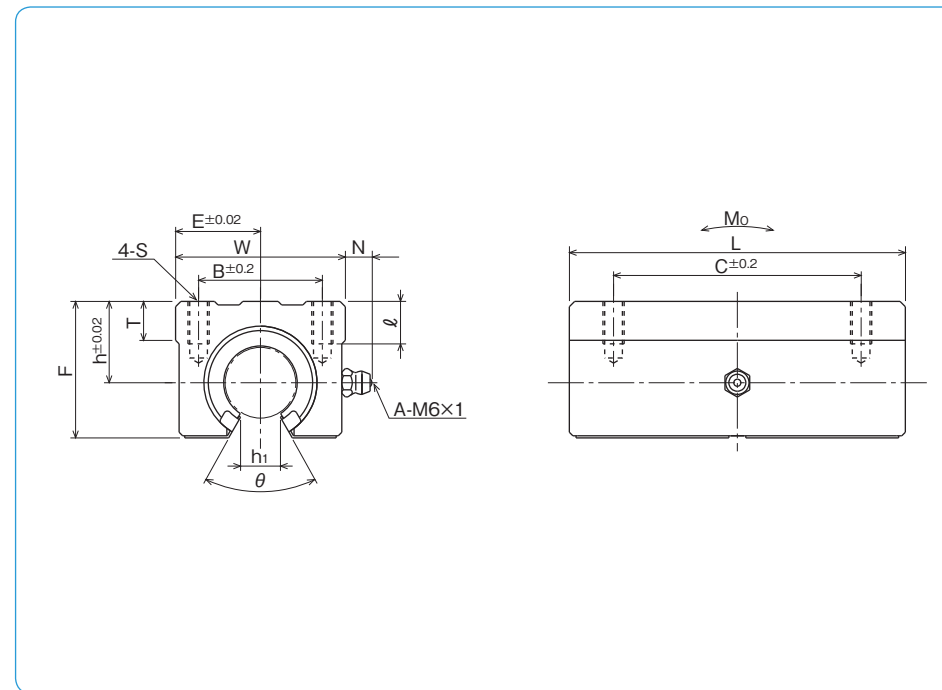


## part number structure



\*Size 10 is provided with resin retainer type only.

part number	inner contact diameter mm	major dimensions								
		h mm	E mm	W mm	outer dimensions					
					L mm	F mm	T mm	N mm	h <sub>1</sub> mm	θ
<b>SME10GWUU</b>	10	15	18	36	65	24	7	7.5	6	80°
<b>SME13GWUU</b>	13	17	20	40	75	28	8	7.5	8.5	80°
<b>SME16GWUU</b>	16	20	22.5	45	85	33	9	7.5	10	80°
<b>SME20GWUU</b>	20	23	24	48	95	39	11	7.5	10	60°
<b>SME25GWUU</b>	25	27	30	60	130	47	14	7.5	11.5	50°
<b>SME30GWUU</b>	30	33	35	70	140	56	15	7.5	14	50°



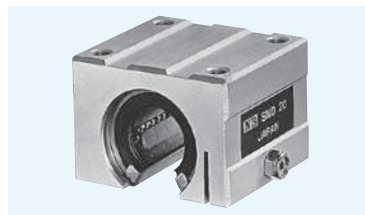
B mm	mounting dimensions			dynamic C N	static Co N	allowable static moment Mo N · m	※ mass g	shaft diameter mm
	C mm	S	ℓ mm					
25	40	M5	10	588	1,100	4.63	140	10
28	50	M5	10	813	1,570	7.42	200	13
32	60	M5	12	1,230	2,350	12.6	300	16
35	70	M6	12	1,400	2,740	14.5	400	20
40	90	M6	12	1,560	3,140	24.7	900	25
50	100	M8	18	2,490	5,490	47.2	1,260	30

\* Mass of resin retainer type

1N≐0.102kgf 1N · m≐0.102kgf · m

# SMD TYPE

— Open Block with Clearance Adjustable Type —



## part number structure

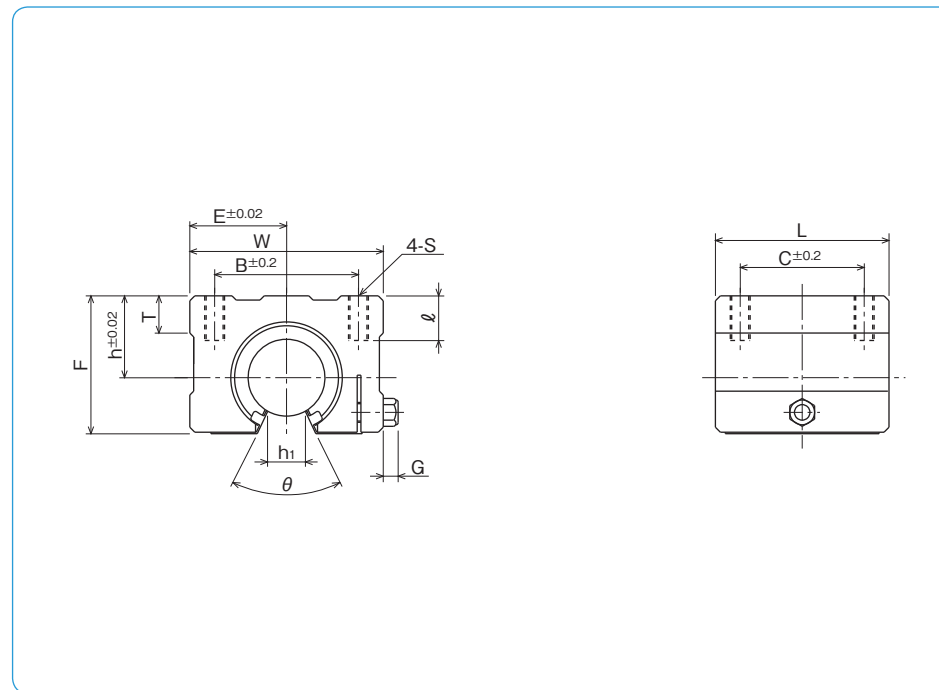
example **SMSD 25 G UU**

specification  
**SMD**: standard  
**SMSD**: anti-corrosion

seal  
**blank**: without seal  
**UU**: seals on both sides

retainer material  
**blank**: standard/steel  
 anti-corrosion/stainless steel  
**G**: resin

inner contact diameter



part number	inner contact diameter mm	h mm	outer dimensions				major dimensions				
			E mm	W mm	L mm	F mm	T mm	G mm	h <sub>1</sub> mm	θ	
<b>SMD16GUU</b>	16	20	25	50	45	33	9	6	10	80°	
<b>SMD20GUU</b>	20	23	27	54	50	39	11	7	10	60°	
<b>SMD25GUU</b>	25	27	38	76	65	47	14	7	11.5	50°	
<b>SMD30GUU</b>	30	33	39	78	70	56	15	7	14	50°	

mounting dimensions				basic load rating		* mass g	shaft diameter mm
B mm	C mm	S	ℓ mm	dynamic C N	static Co N		
36	30	M5	12	774	1,180	170	16
40	35	M6	12	882	1,370	240	20
54	40	M6	12	980	1,570	580	25
58	50	M8	18	1,570	2,740	720	30

\* Mass of resin retainer type

1N=0.102kgf

# RB TYPE

— Resin Block Type —

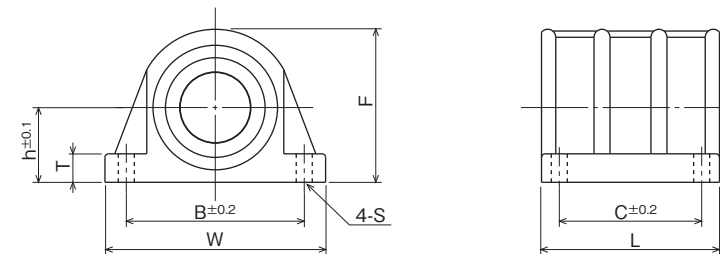


## part number structure

example **RB 20**

RB type

inner contact diameter



part number	inner contact diameter		major dimensions			
	mm	tolerance μm	h mm	outer dimensions		
				W mm	L mm	F mm
<b>RB10</b>	10	0 -9	13	45	35	26.5
<b>RB12</b>	12		15	50	36	30
<b>RB13</b>	13		15	50	39	31
<b>RB16</b>	16		19	56	44	38.5
<b>RB20</b>	20		0/-10	21	62	50

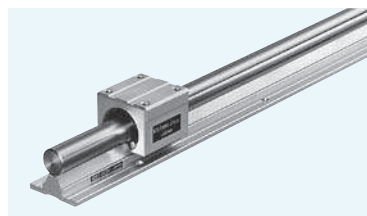
RB has seals as standard.

T mm	mounting dimensions			basic load rating		mass g	shaft diameter mm
	B mm	C mm	S mm	dynamic C N	static Co N		
6	35	21	4.5	372	549	43	10
6.5	40	26	4.5	510	784	50	12
6.5	40	26	4.5	510	784	63	13
7	46	34	4.5	774	1,180	99	16
8	50	40	5.5	882	1,370	127	20

1N≐0.102kgf

# CE TYPE

– Non-Clearance Adjustable Type –



## part number structure

**CES 25 - 2 - 500**

specification  
**CE:** standard  
**CES:** anti-corrosion

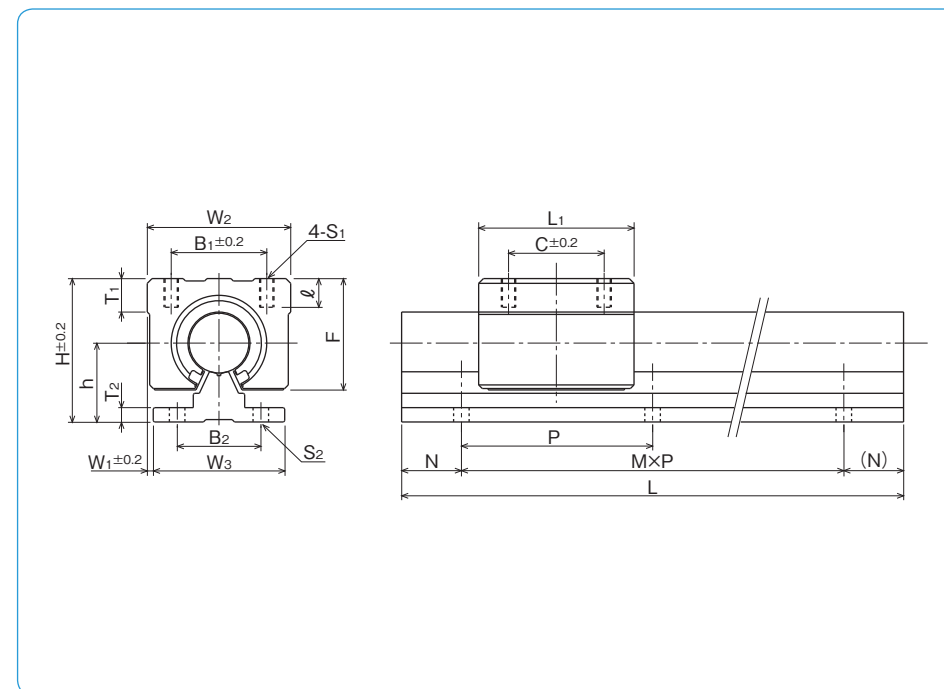
total length

shaft diameter

number of blocks  
 attached to one shaft

※Bush inside is a resin retainer type with seals.

part number		shaft diameter mm	assembly dimension			block dimension										major dimensions				
standard	anti-corrosion		H mm	h mm	W <sub>1</sub> mm	W <sub>2</sub> mm	L <sub>1</sub> mm	B <sub>1</sub> mm	C mm	T <sub>1</sub> mm	ℓ mm	S <sub>1</sub>	F mm	W <sub>3</sub> mm	B <sub>2</sub> mm	T <sub>2</sub> mm	P mm	S <sub>2</sub> mm		
<b>CE16</b>	<b>CES16</b>	16	45	25	2.5	45	45	32	30	9	12	M5	33	40	30	5	150	5.5		
<b>CE20</b>	<b>CES20</b>	20	50	27	1.5	48	50	35	35	11	12	M6	39	45	30	5	150	5.5		
<b>CE25</b>	<b>CES25</b>	25	60	33	2.5	60	65	40	40	14	12	M6	47	55	35	6	200	6.5		
<b>CE30</b>	<b>CES30</b>	30	70	37	5	70	70	50	50	15	18	M8	56	60	40	7	200	6.5		

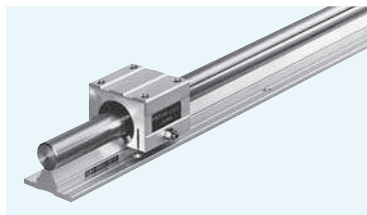


rail dimensions L (M,N) mm				basic load rating		mass		size
				dynamic C N	static Co N	block g	rail kg/m	
300 (1,75)	500 (3,25)	800 (5,25)	1,000 (6,50)	774	1,180	150	2.58	<b>16</b>
1,500 (9,75)	1,800 (11,75)	2,000 (13,25)		882	1,370	200	3.49	<b>20</b>
300 (1,50)	500 (2,50)	800 (3,100)	1,000 (4,100)	980	1,570	450	5.31	<b>25</b>
1,500 (7,50)	1,800 (8,100)	2,000 (9,100)		1,570	2,740	630	7.39	<b>30</b>

1N=0.102kgf

# CD TYPE

– Clearance Adjustable Type –



## part number structure

**CDS 25 - 2 - 500**

specification  
 CD: standard  
 CDS: anti-corrosion

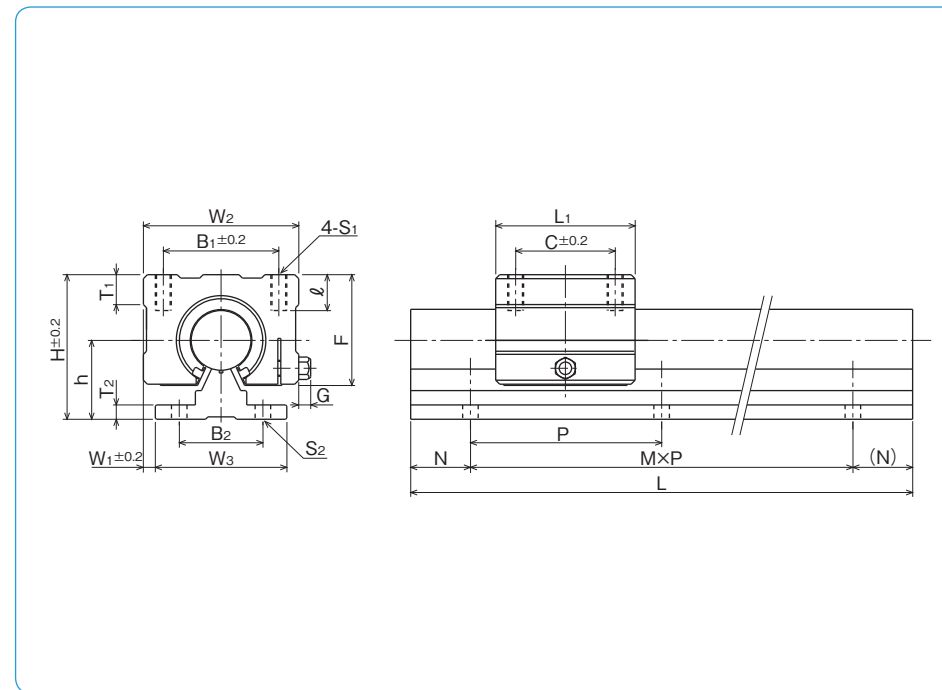
total length

shaft diameter

number of blocks  
 attached to one shaft

※Bush inside is a resin retainer type with seals.

part number		shaft diameter mm	assembly dimensions				block dimensions										major dimensions			
standard	anti-corrosion		H	h	W <sub>1</sub>	W <sub>2</sub>	L <sub>1</sub>	B <sub>1</sub>	C	T <sub>1</sub>	ℓ	S <sub>1</sub>	G	F	W <sub>3</sub>	B <sub>2</sub>	T <sub>2</sub>	P	S <sub>2</sub>	
<b>CD16</b>	<b>CDS16</b>	16	45	25	5	50	45	36	30	9	12	M5	6	33	40	30	5	150	5.5	
<b>CD20</b>	<b>CDS20</b>	20	50	27	4.5	54	50	40	35	11	12	M6	7	39	45	30	5	150	5.5	
<b>CD25</b>	<b>CDS25</b>	25	60	33	10.5	76	65	54	40	14	12	M6	7	47	55	35	6	200	6.5	
<b>CD30</b>	<b>CDS30</b>	30	70	37	9	78	70	58	50	15	18	M8	7	56	60	40	7	200	6.5	

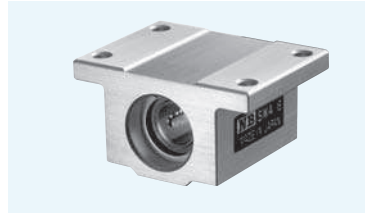


rail dimensions L (M,N) mm				basic load rating		mass		size
				dynamic C N	static Co N	block g	rail kg/m	
300 (1,75)	500 (3,25)	800 (5,25)	1,000 (6,50)	774	1,180	170	2.58	<b>16</b>
1,500 (9,75)	1,800 (11,75)	2,000 (13,25)		882	1,370	240	3.49	<b>20</b>
300 (1,50)	500 (2,50)	800 (3,100)	1,000 (4,100)	980	1,570	580	5.31	<b>25</b>
1,500 (7,50)	1,800 (8,100)	2,000 (9,100)		1,570	2,740	720	7.39	<b>30</b>

1N=0.102kgf

# SWA TYPE (Inch Standard)

– Block Type –



## part number structure

example **SWA20GRUU**

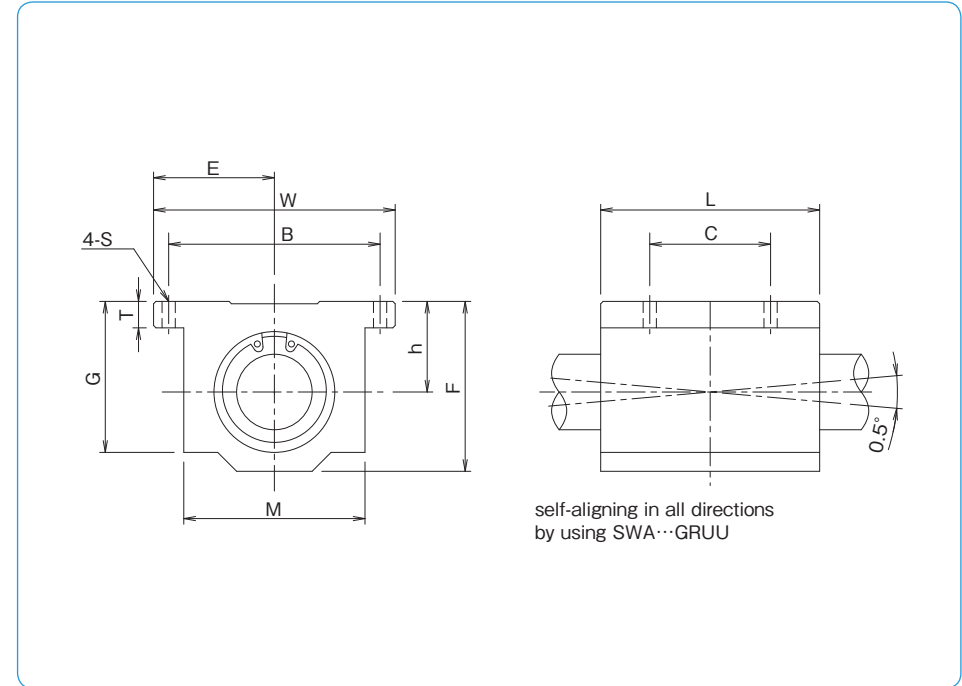
specification  
**SWA**: standard  
**SWSA**: anti-corrosion

size

retainer material  
**blank**: standard/steel  
 anti-corrosion/stainless steel  
**G**: resin

seal  
**blank**: without seal  
**UU**: seals on both sides

self-aligning  
 (SWA-resin retainer only)



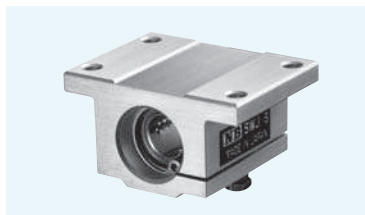
part number	inner contact diameter tolerance		major dimensions				
	inch/(mm)	inch/(μm)	outer dimensions				
			h ±.001/(±0.02) inch/(mm)	E ±.001/(±0.02) inch/(mm)	W inch/(mm)	L inch/(mm)	F inch/(mm)
<b>SWA 4GUU</b>	.2500 (6.350)	0 −.00040 (−9)	.4370 (11.100)	.8125 (20.638)	1.625 (41.28)	1.188 (30.16)	.813 (20.64)
<b>SWA 6GUU</b>	.3750 (9.525)		.5000 (12.700)	.8750 (22.225)	1.750 (44.45)	1.313 (33.34)	.938 (23.82)
<b>SWA 8GUU</b>	.5000 (12.700)		.6870 (17.450)	1.0000 (25.400)	2.000 (50.80)	1.688 (42.86)	1.250 (31.75)
<b>SWA 10GUU</b>	.6250 (15.875)		.8750 (22.225)	1.2500 (31.750)	2.500 (63.50)	1.938 (49.21)	1.625 (41.28)
<b>SWA 12GUU</b>	.7500 (19.050)		.9370 (23.800)	1.3750 (34.925)	2.750 (69.85)	2.063 (52.39)	1.750 (44.45)
<b>SWA 16GUU</b>	1.0000 (25.400)	0 −.00040 (−10)	1.1870 (30.150)	1.6250 (41.275)	3.250 (82.55)	2.813 (71.44)	2.188 (55.56)
<b>SWA 20GUU</b>	1.2500 (31.750)		1.5000 (38.100)	2.0000 (50.800)	4.000 (101.60)	3.625 (92.08)	2.813 (71.44)
<b>SWA 24GUU</b>	1.5000 (38.100)	0 −.00050 (−12)	1.7500 (44.450)	2.3750 (60.325)	4.750 (120.65)	4.000 (101.60)	3.250 (82.55)
<b>SWA 32GUU</b>	2.0000 (50.800)		2.1250 (53.975)	3.0000 (76.200)	6.000 (152.40)	5.000 (127.00)	4.063 (103.19)

T	G	M	mounting dimensions			dynamic C	static Co	mass
			B ±.01/(±0.2) inch/(mm)	C ±.01/(±0.2) inch/(mm)	S inch/(mm)			
.188 (4.76)	.750 (19.05)	1.000 (25.40)	1.312 (33.33)	.750 (19.05)	.156 (4.0)	206	265	45
.188 (4.76)	.875 (22.23)	1.125 (28.58)	1.437 (36.50)	.875 (22.23)	.156 (4.0)	225	314	62
.250 (6.35)	1.125 (28.58)	1.375 (34.93)	1.688 (42.88)	1.000 (25.40)	.156 (4.0)	510	784	130
.281 (7.14)	1.437 (36.50)	1.750 (44.45)	2.125 (53.98)	1.125 (28.58)	.188 (4.8)	774	1,180	240
.313 (7.94)	1.563 (39.69)	1.875 (47.63)	2.375 (60.33)	1.250 (31.75)	.188 (4.8)	862	1,370	290
.375 (9.53)	1.938 (49.21)	2.375 (60.33)	2.875 (73.03)	1.750 (44.45)	.219 (5.6)	980	1,570	615
.438 (11.11)	2.500 (63.50)	3.000 (76.20)	3.500 (88.90)	2.000 (50.80)	.219 (5.6)	1,570	2,740	1,300
.500 (12.70)	2.875 (73.03)	3.500 (88.90)	4.125 (104.78)	2.500 (63.50)	.281 (7.2)	2,160	4,020	1,900
.625 (15.88)	3.625 (92.08)	4.500 (114.30)	5.250 (133.35)	3.250 (82.55)	.406 (10.5)	3,820	7,940	3,600

SI UNIT 1N≐0.225lbf  
 1kg≐2.205lbs

# SWJ TYPE (Inch Standard)

– Clearance Adjustable Block Type –



### part number structure

example **SWJ20GRUU**

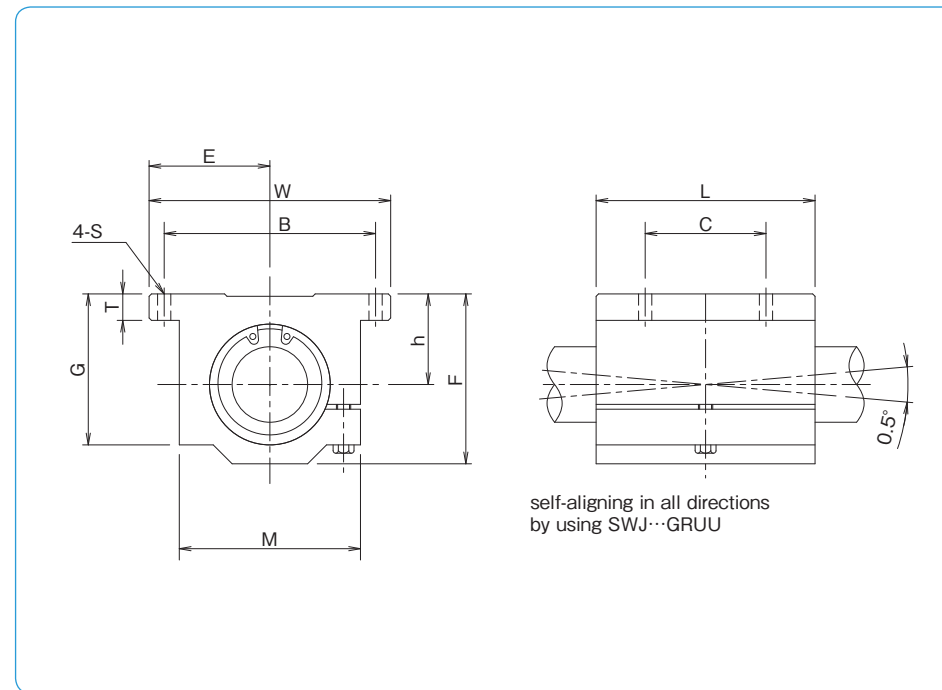
specification  
**SWJ:** standard  
**SWSJ:** anti-corrosion

size

retainer material  
**blank:** standard/steel  
 anti-corrosion/stainless steel  
**G:** resin

seal  
**blank:** without seal  
**UU:** seals on both sides

self-aligning  
 (SWA-resin retainer only)



part number	inner contact diameter inch/(mm)	major dimensions outer dimensions				
		h ±.001/(±0.02) inch/(mm)	E ±.001/(±0.02) inch/(mm)	W inch/(mm)	L inch/(mm)	F inch/(mm)
<b>SWJ 4GUU</b>	.2500 (6.350)	.4370 (11.100)	.8125 (20.638)	1.625 (41.28)	1.188 (30.16)	.813 (20.64)
<b>SWJ 6GUU</b>	.3750 (9.525)	.5000 (12.700)	.8750 (22.225)	1.750 (44.45)	1.313 (33.34)	.938 (23.82)
<b>SWJ 8GUU</b>	.5000 (12.700)	.6870 (17.450)	1.0000 (25.400)	2.000 (50.80)	1.688 (42.86)	1.250 (31.75)
<b>SWJ 10GUU</b>	.6250 (15.875)	.8750 (22.225)	1.2500 (31.750)	2.500 (63.50)	1.938 (49.21)	1.625 (41.28)
<b>SWJ 12GUU</b>	.7500 (19.050)	.9370 (23.800)	1.3750 (34.925)	2.750 (69.85)	2.063 (52.39)	1.750 (44.45)
<b>SWJ 16GUU</b>	1.0000 (25.400)	1.1870 (30.150)	1.6250 (41.275)	3.250 (82.55)	2.813 (71.44)	2.188 (55.56)
<b>SWJ 20GUU</b>	1.2500 (31.750)	1.5000 (38.100)	2.0000 (50.800)	4.000 (101.60)	3.625 (92.08)	2.813 (71.44)
<b>SWJ 24GUU</b>	1.5000 (38.100)	1.7500 (44.450)	2.3750 (60.325)	4.750 (120.65)	4.000 (101.60)	3.250 (82.55)
<b>SWJ 32GUU</b>	2.0000 (50.800)	2.1250 (53.975)	3.0000 (76.200)	6.000 (152.40)	5.000 (127.00)	4.063 (103.19)

T	G	M	mounting dimensions			dynamic C	static Co	mass
			B ±.01/(±0.2) inch/(mm)	C ±.01/(±0.2) inch/(mm)	S inch/(mm)			
.188 (4.76)	.750 (19.05)	1.000 (25.40)	1.312 (33.33)	.750 (19.05)	.156 (4.0)	206	265	45
.188 (4.76)	.875 (22.23)	1.125 (28.58)	1.437 (36.50)	.875 (22.23)	.156 (4.0)	225	315	62
.250 (6.35)	1.125 (28.58)	1.375 (34.93)	1.688 (42.88)	1.000 (25.40)	.156 (4.0)	510	784	130
.281 (7.14)	1.437 (36.50)	1.750 (44.45)	2.125 (53.98)	1.125 (28.58)	.188 (4.8)	774	1,180	240
.313 (7.94)	1.563 (39.69)	1.875 (47.63)	2.375 (60.33)	1.250 (31.75)	.188 (4.8)	862	1,370	290
.375 (9.53)	1.938 (49.21)	2.375 (60.33)	2.875 (73.03)	1.750 (44.45)	.219 (5.6)	980	1,570	615
.438 (11.11)	2.500 (63.50)	3.000 (76.20)	3.500 (88.90)	2.000 (50.80)	.219 (5.6)	1,570	2,740	1,300
.500 (12.70)	2.875 (73.03)	3.500 (88.90)	4.125 (104.78)	2.500 (50.80)	.281 (7.2)	2,160	4,020	1,900
.625 (15.88)	3.625 (92.08)	4.500 (114.30)	5.250 (133.35)	3.250 (82.55)	.406 (10.5)	3,820	7,940	3,600

SI UNIT 1N≒0.225lbf  
 1kg≒2.205lbs

# SWD TYPE (Inch Standard)

— Open Block Type —



## part number structure

example **SWD20GRUU**

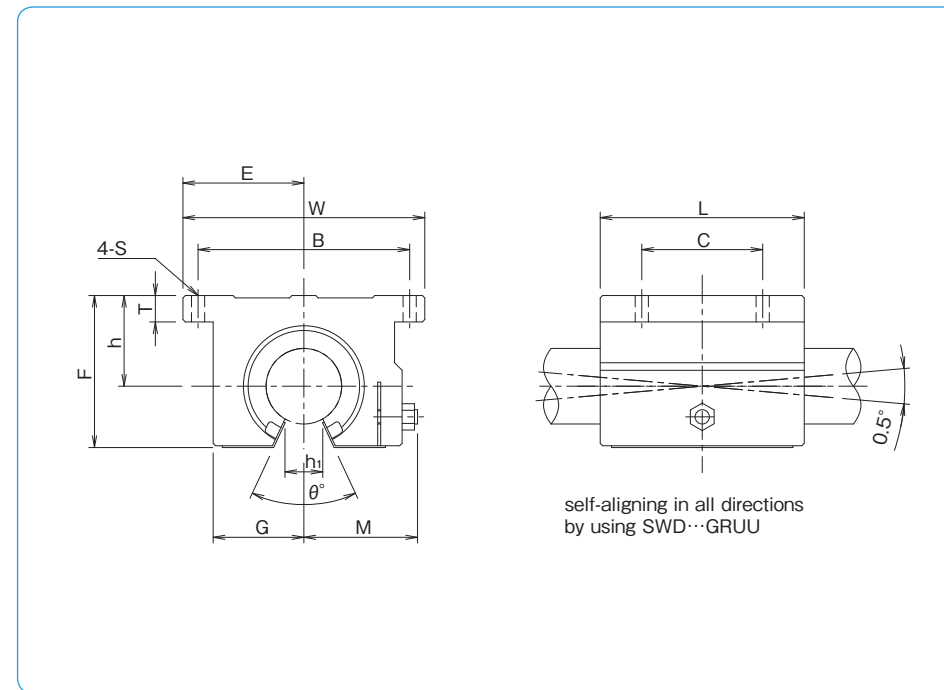
specification  
**SWD**: standard  
**SWSD**: anti-corrosion

size

retainer material  
**blank**: standard/steel  
 anti-corrosion/stainless steel  
**G**: resin

seal  
**blank**: without seal  
**UU**: seals on both sides

self-aligning  
 (SWD-resin retainer only)



part number	inner contact diameter inch/(mm)	major dimensions						
		h ±.001/(±0.02) inch/(mm)	E ±.001/(±0.02) inch/(mm)	W inch/(mm)	L inch/(mm)	F inch/(mm)	T inch/(mm)	G inch/(mm)
<b>SWD 8GUU</b>	.5000 (12.700)	.6870 (17.450)	1.0000 (25.400)	2.000 (50.80)	1.500 (38.10)	1.100 (27.94)	.250 (6.35)	.688 (17.5)
<b>SWD 10GUU</b>	.6250 (15.875)	.8750 (22.225)	1.2500 (31.750)	2.500 (63.50)	1.750 (44.45)	1.375 (34.93)	.281 (7.14)	.875 (22.23)
<b>SWD 12GUU</b>	.7500 (19.050)	.9370 (23.800)	1.3750 (34.950)	2.750 (69.85)	1.875 (47.63)	1.535 (39.00)	.315 (8.00)	.937 (23.80)
<b>SWD 16GUU</b>	1.0000 (25.400)	1.1870 (30.150)	1.6250 (41.300)	3.250 (82.55)	2.625 (66.68)	1.975 (50.17)	.375 (9.53)	1.188 (30.18)
<b>SWD 20GUU</b>	1.2500 (31.750)	1.5000 (38.100)	2.0000 (50.800)	4.000 (101.60)	3.375 (85.73)	2.485 (63.12)	.437 (11.10)	1.500 (38.10)
<b>SWD 24GUU</b>	1.5000 (38.100)	1.7500 (44.450)	2.3750 (60.325)	4.750 (120.65)	3.750 (95.25)	2.910 (73.90)	.500 (12.70)	1.750 (44.45)
<b>SWD 32GUU</b>	2.0000 (50.800)	2.1250 (53.975)	3.0000 (76.200)	6.000 (152.4)	4.750 (120.65)	3.660 (92.90)	.625 (15.88)	2.250 (57.15)

M	h <sub>1</sub>	θ	mounting dimensions			dynamic C	static C <sub>0</sub>	mass
			B ±.01/(±0.2) inch/(mm)	C ±.01/(±0.2) inch/(mm)	S inch/(mm)			
.98 (24.89)	.3425 (8.70)	80°	1.688 (42.88)	1.000 (25.40)	.156 (4.0)	510	784	98
1.15 (29.21)	.375 (9.53)	80°	2.125 (53.98)	1.125 (28.58)	.188 (4.8)	774	1,180	185
1.23 (31.24)	.4375 (11.11)	60°	2.375 (60.33)	1.250 (31.75)	.188 (4.8)	862	1,370	235
1.48 (37.59)	.5625 (14.29)	50°	2.875 (73.03)	1.750 (44.45)	.218 (5.6)	980	1,570	530
1.88 (47.75)	.625 (15.88)	50°	3.500 (88.90)	2.000 (50.80)	.218 (5.6)	1,570	2,740	1,080
2.12 (53.85)	.750 (19.05)	50°	4.125 (104.78)	2.500 (63.50)	.281 (7.4)	2,160	4,020	1,620
2.70 (68.58)	1.00 (25.40)	50°	5.250 (133.35)	3.250 (82.55)	.406 (10.5)	3,820	7,940	3,100

SI UNIT 1N≐0.225lbf  
 1kg≐2.205lbs



# RBW TYPE

(Inch Standard / Anti-Corrosion Type)

— Resin Block Type —

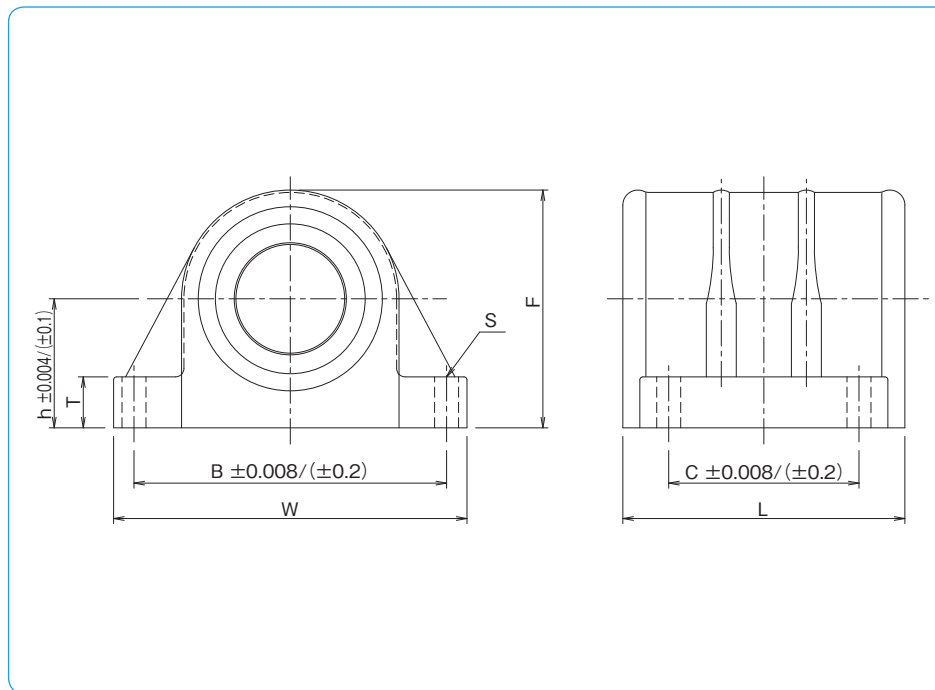


## part number structure

example **RBW 16**

RBW type

size



part number	inner contact diameter tolerance		major dimensions			
	inch/(mm)	inch/( $\mu$ m)	h inch/(mm)	outer dimensions W L F inch/(mm) inch/(mm) inch/(mm)		
<b>RBW 8</b>	.5000 (12.700)	0 -0.00040 (-9)	.6870 (17.450)	2.000 (50.80)	1.5937 (40.481)	1.2500 (31.750)
<b>RBW 10</b>	.6250 (15.875)		.8750 (22.225)	2.500 (63.50)	1.8437 (46.831)	1.6250 (41.275)
<b>RBW 12</b>	.7500 (19.050)	0 -0.00040 (-10)	.9370 (23.800)	2.750 (69.85)	1.9687 (50.006)	1.7500 (44.450)
<b>RBW 16</b>	1.0000 (25.400)		1.1870 (30.150)	3.250 (82.55)	2.5937 (65.881)	2.1870 (55.550)

※RBW type has side-seals as standard.

mounting dimensions				basic load rating		mass g
T inch/(mm)	B inch/(mm)	C inch/(mm)	S inch/(mm)	dynamic C N	static Co N	
.3437 (8.731)	1.688 (42.875)	1.000 (25.400)	.157 (4.0)	510	784	51
.3750 (9.525)	2.125 (53.975)	1.125 (28.575)	.189 (4.8)	774	1180	99
.4063 (10.319)	2.375 (60.325)	1.250 (31.750)	.189 (4.8)	862	1370	129
.4687 (11.906)	2.875 (73.025)	1.750 (44.450)	.220 (5.6)	980	1570	242

SI UNIT 1N≒0.225lbf  
1kg≒2.205lbs