

BT lifter

Long-Life Hand Pallet Trucks and Hand Stackers



TOYOTA

MATERIAL HANDLING

stronger together



BT long-life hand pallet trucks and hand stackers

Durability

Hand pallet trucks are essential tools for moving heavy loads. The BT hand pallet truck range has been setting standards in strength and performance for over 60 years. Today's BT Lifter range from Toyota Material Handling Europe maintains these values. Manufactured at our dedicated production facility in Sweden, our trucks are proven to be the most durable, lasting up to five times as long as other makes in work cycle tests.

This means that the BT Lifter offers by far the lowest lifetime cost.

Simplicity

Simplicity is also central to the design of BT trucks, allowing goods to be moved safely with minimum effort. The range includes models with an easy-start facility for heavier loads, and even trucks that are electrically powered.

Environment

Toyota Material Handling has a commitment to the environment. Our approach to hand pallet truck design and manufacture reflects this commitment, both in the way we build our trucks and as a result of their long operating life – reducing renewal rates and therefore the impact of truck disposal, again leading to...

... the lowest possible lifetime cost



A long, reliable working life

Our trucks are designed for a long lifetime of safe, reliable service. In carefully controlled and continuous tests we have measured how many work cycles can be accomplished by a BT Lifter. Comparable tests have shown that most hand trucks wear out and need to be replaced up to five times to carry out the same amount of work.

Lifetime guarantee

So confident are we in the results of these tests that we provide a unique guarantee. The BT Lifter LHM230 comes with a lifetime (99-year) functional guarantee on the fork frame – a clear demonstration of our commitment to durability.

Direct commercial benefits

The long, guaranteed working life of a hand truck from BT gives direct commercial benefits. However low the cost of alternative hand trucks, the reality that they are likely to be replaced

up to five times during the life of a single BT unit means the economic advantages of choosing BT are clear. We achieve these outstanding levels of quality and durability by combining our 60-year commitment to the manufacture of quality hand trucks with the benefit of the Toyota Production System philosophy (see page 8).

The result is evident. Trustworthy, reliable hand trucks that save you money.





Ease-of-use, through innovation

BT hand trucks have evolved over decades. The control handle has been carefully designed to provide a comfortable grip without stress to the arms and hands. Innovation has been central to the development of the range.

The easy-start BT Pro Lifter

Recent innovations include the unique BT Pro Lifter, which makes getting a heavy load moving easy. By simply engaging the manual control lever, the steering arm provides leverage to get the load in motion, reducing effort by up to 67%.

Motorized load movement

For nearly effortless movement of goods, the BT Pro Lifter M has an electric motor built into the main wheel. This means that loads of up to one ton can be moved at the touch of a button.

Quick-lift models

BT Lifters are available with 'quick-lift' specification, which means that it takes just two strokes of the pump unit to elevate the load. The easy-start BT Pro Lifter is also available as a quick-lift model.

Weigh the load on the move

BT Lifters are available as both a 'weight indicator' version,

offering +/-20 kg accuracy, and a full legal-for-trade 'scale' truck that allows accurate measurement of loads during the handling process. An optional printer means documentation can be produced at the point of weighing.

High Lifter trucks

With 800 mm lift heights, BT High Lifter models not only move loads quickly and easily, but they can elevate loads to a comfortable height for load transfer, or to function as a height-adjustable work table. Electric lift and Galvanized/Inox models are also available.

Ultra low

BT's Ultra Low Lifter has a minimum fork height of just 35 mm, making it ideal for applications using low-clearance pallets and load ledges to maximize space.



The BT Pro Lifter M (LHT100) can move loads of up to one ton at the touch of a button



The LHM230SC's weighing scale allows accurate measurement of loads during the handling process

Materials handling for Europe

Toyota Material Handling Europe (TMHE) has a strong European presence with its Toyota and BT brands, establishing close geographic links with its customers in order to better respond to their needs. TMHE has operations in more than 30 countries, and production centres in Ancenis (France), Bologna (Italy) and Mjölby (Sweden).

Toyota Production System

The Toyota Production System (TPS) empowers team members to optimize quality by constantly improving processes and eliminating unnecessary waste of resources. TPS includes a common set of knowledge, values and procedures, entrusts employees with well-defined responsibilities in each production step, and encourages each staff member to strive for overall improvement. Today, TPS is the acknowledged reference among automotive manufacturers and related industries. Our methods enable businesses to achieve sustained gains in productivity while satisfying customer expectations for quality and reliability.

Research & Development

TMHE benefits from Toyota's vast experience in the automotive industry, especially in engine development. By taking full advantage of the group's massive R&D facilities and engineering expertise, Toyota has developed a number of world-class technologies. Intelligent use of electronic and computer controlled devices has also made a significant contribution to creating more ergonomic and user-friendly operator environments, contributing to safety in the workplace.

Empowering your business

Our services and solutions are designed to provide different levels and types of support in response to individual customer's needs. This approach gives our customers the power to focus on their core business.

Our commitment to the environment

TMHE believes that getting the job done should never be at the expense of our environment. Our long-term commitment is to develop and deliver environmentally friendly and economically viable materials handling solutions that respect present and future

energy needs. TMHE strives to reduce environmental impact throughout the product life cycle, from design, manufacturing and operation through to recycling at end-of-life. TMHE's production centres are all ISO 14001 certified. A declaration of the emissions and waste during the manufacturing process and typical life cycle is available on request.

With its emphasis on eliminating waste, TPS also helps to reduce the environmental impact of our manufacturing activities. CO₂ emissions, water consumption, waste-water generation and landfill quantities have all been reduced, while recycling levels for packaging, water and scrap have been raised. Hazardous substances and air pollutants have also been reduced. Moving towards the creation of a recycling-oriented society, TMHE seeks to continuously improve the recyclability levels of its products.



BT Hand Trucks

The BT Lifter LHM230 carries the ECO label, which demonstrates TMHE's commitment to minimizing the environmental impact of its hand trucks.

Noise levels and the environment

In some situations the noise associated with moving goods can be a problem. This can typically occur in urban areas where, for example, daily goods deliveries take place late at night or early in the morning. The BT Lifter Silent addresses this problem, by ensuring that noise levels do not exceed 60 dBA, or the noise of two people in normal conversation.

Environmental calculation

In any typical life cycle five other hand pallet trucks would be required to do the work of one BT Lifter:

= 5 x less manufacturing process

= 5 x less distribution

= 5 x less disposal cost

= 5 x less negative environmental impact



Facts about manufacturing in

Sweden:

*Toyota Production System
(latest manufacturing processes)*

- quality components
- high efficiency
- low energy consumption
- low waste output
- no toxic pollutants





BT Lifters – the long-life range

BT Lifter LHM230

When everyday performance is required... The standard BT Lifter has a lift capacity of 2300 kg.



BT Heavy Lifter LHM300

When the heaviest goods need to be moved... The BT Heavy Lifter, with its lift capacity of 3000 kg, can handle the heaviest loads.

BT Quick Lifter LHM230Q

When maximum productivity is required... The BT Quick Lifter reaches the pallet with the first pump stroke and lifts it with the second.

BT Lifter Ultra Low LHM075UL

When handling low profile load carriers... The BT Lifter Ultra Low is designed to operate with low-clearance pallets and disposable pallets, which are increasingly common in containers which have been loaded by conventional forklifts. Maximum lift capacity 750 kg.



BT Pro Lifter LHM230P

When the starting force needs to be minimal... The BT Pro Lifter requires up to 67% less force than a standard hand pallet truck to start moving when laden. Maximum lift capacity 2300 kg.



BT Pro Lifter M LHT100

When close to effort-free travel is required... The BT Pro Lifter M features an electric drive motor for powered travel in either direction.



BT Lifter Silent LHM230SI

For 'after-hours' deliveries... The BT Lifter Silent operates with a noise level that does not exceed 60 dBA, making it perfect for applications such as early morning and night deliveries in residential areas.



BT Stainless Lifter LHM200ST

When operating in corrosive or clean environments... The BT Stainless Lifter is intended for corrosive environments and applications that demand a high standard of hygiene. Its structure is long-lasting high-grade stainless steel.



BT Lifter Galvanized LHM230G

An economical alternative to the Stainless Lifter for 'semi-wet' environments.

BT Lifter with scale LHM200SC

When the load weight needs to be measured... The BT Lifter with scale is designed to provide high-accuracy weighing during the handling process.



BT High Lifter HHM100

When an ergonomic workstation is required... BT High Lifter models offer hand-truck versatility with the extra feature of a lift height of over 800 mm.



BT Lifter with weight indicator LHM230WI

For applications in which +/-20 kg accuracy is acceptable.

BT High Lifter HHL100

When an ergonomic workstation is required... The electric lift model of the BT High Lifter is the ideal ergonomic workstation. Add the optional automatic height adjustment for effort-free automatic lift/lower, keeping the top of the load at the same height, for easy working and picking.



BT High Lifter Galvanized/Inox HHM100I

When an ergonomic workstation is required in corrosive or clean environments... The BT High Lifter Inox intended for environments and applications that demand a higher standard of hygiene and where corrosion can occur. Its structure is long-lasting high-grade stainless steel.



BT Ministacker SHM080 / SHL080

When needing to stack loads... The BT Ministacker is ideal for small stores. Maximum lift capacity 800 kg, maximum lift height 1600 mm. The SHL080 version features electric lift.

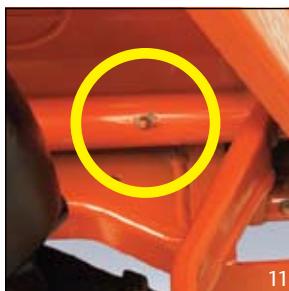
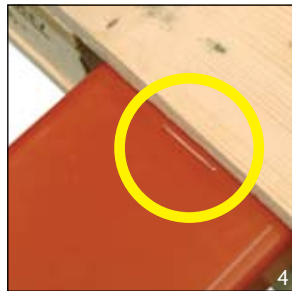
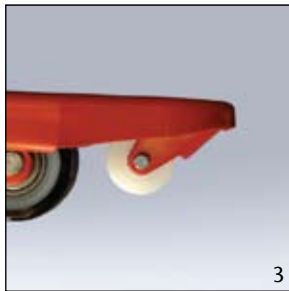


Custom designs

When your application has unique requirements... We can meet them.



Choose the features that suit your needs



picture number	BT Lifter – LHM230	BT Heavy Lifter – LHM300	BT Quick Lifter – LHM230Q	BT Lifter Ultra Low – LHM075UL	BT Pro Lifter – LHM230P	BT Pro Lifter M – LHM100	BT Lifter Silent – LHM230S1	BT Stainless Lifter – LHM200ST	BT Lifter Galvanized – LHM230G	BT Lifter with scale – LHM200SC	BT Lifter with weight indicator – LHM230WI	BT High Lifter – HHM100	BT High Lifter – HHL100	BT High Lifter Inox – HHM100I	BT High Lifter Inox – HHL100I	BT Ministacker – SHM080	BT Ministacker – SHL080
----------------	--------------------	--------------------------	---------------------------	--------------------------------	-------------------------	--------------------------	-----------------------------	--------------------------------	--------------------------------	---------------------------------	--	-------------------------	-------------------------	-------------------------------	-------------------------------	-------------------------	-------------------------

Truck features																	
Automatic height adjustment	1																
Bogie fork wheels	2	○	●	○	●	○	●	○	○	○	○						
Choice of chassis/fork widths		●	●	●	●	●	●	●	●	●	●	●	●	●	●	●	●
Choice of wheel materials/types		●	●	●	●	●	●	●	●	●	●						
Climber wheels*	3	●	●		●	●		●	●	●	●						
Overload limitation version		○	●	○	●	●	○			○							
Quick-lift version				●	●	○		○		○	●	●		●		●	
Train version		○		○													
Markers on the forks**	4	●	●		●	●	●	●	●	●	●						
Safety features																	
Foot protection							●									●	●
Automatic parking brake							●										
Emergency collision button							●										
Emergency stop/cut-off							●										●
Driving features																	
BT Lowering Control (BLC)		●	●	●	●	●	●	●	●	●	●	●	●	●	●	●	●
180°+ steering																●	●
Electronic braking system							●										
Electronic speed control							●										
Support wheels							○										
Controls and instruments																	
Electronic fingertip controls							●						●		●		
Weighing scale with optional printer	5									●							
Accessories																	
Handbrake	6	○	○	○						○	○	○	○				
Load support	7	○		○	○												
Parking brake	8	○	○	○			●			○	○	○				●	●
BT Parklock	9	○		○	○												
Stackerstop		○	○	○	○	○	○	○	○	○	○	○	○	○	○	○	○
Pen and paper holder	10	○	○	○	○	○	○	○	○	○	○	○	○	○	○	○	○
Maintenance features																	
Lubrication points	11	●	●	●	●	●	●	●	●	●	●	●	●	●	●	●	●
Battery management features																	
Battery change facility											●	●					
Battery status indicator							●				●	●					
Built-in charger							●							●		●	
Special applications																	
Coldstore oil		○	○					●	○					●	●		
Wet specification version		○															
Corrosive environment version								●	●					●	●		
Reel/drum handling	12	○	○	○	○	○											

● standard ○ optional
 * Standard on single fork wheels
 ** Standard on 1150 mm fork models

How to choose the right wheel type

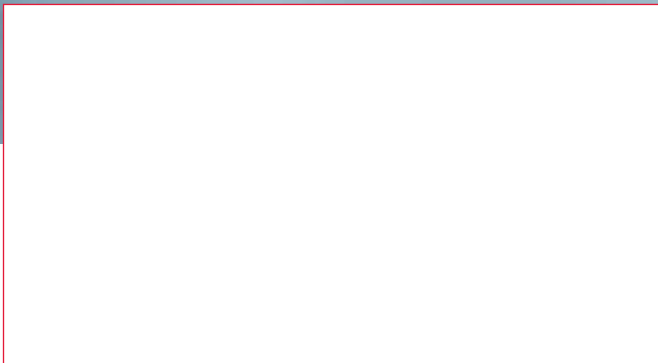
Nylon An easy-rolling wheel on hard floors. Hard and durable; the best choice when the load is heavy

Rubber Quiet and provides good grip on wet/slippery floors

Steel Suitable for heavy industry. Easy-rolling wheel that resists damage and dirt and has a very long life

Powerthane Combines noiseless travel with high wear resistance

Polyurethane Softer and quieter in use than nylon



TOYOTA

MATERIAL HANDLING

stronger together

TOYOTA MATERIAL HANDLING EUROPE, MANAGING THE TOYOTA AND BT MATERIALS HANDLING BRANDS IN EUROPE