



EW65

Wheeled Excavators

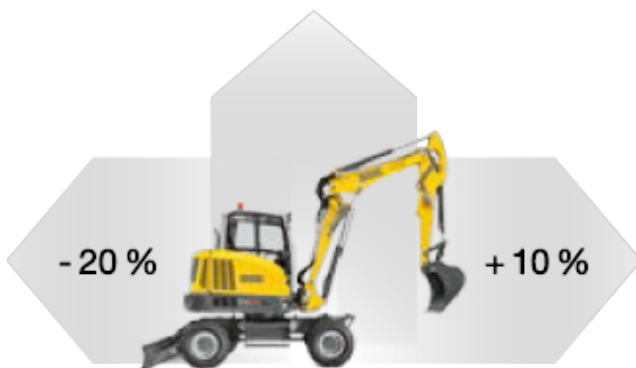


Drives itself to the next construction site: EW65

The wheeled excavator EW65 drives itself to the site of application thanks to the installed street driving mode and does not require a time and cost-intensive transport. The variable drive system with up to 20 km/h has low fuel consumption and with just one pedal drives almost like a car. The powerful load-sensing hydraulic system with LUDV* (load-independent flow control) also provides for the same speeds of several movements with different loads. With 5 control circuits — of which 3 are individually adjustable — and an articulated boom, the EW65 is very efficient and its way quickly.

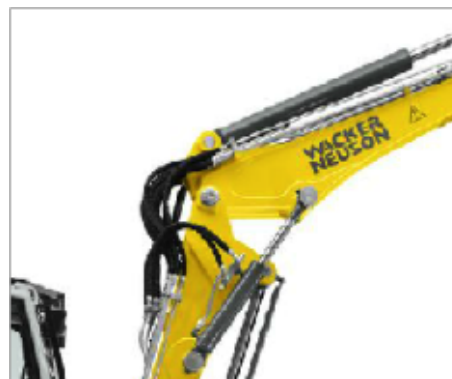
- Precise and sensitive operation thanks to the load sensing hydraulic system with LUDV (load-independent flow control)*
- Low consumption due to the economical ECO mode
- Up to 5 auxiliary control circuits for the most varied attachments
- Maintenance and service made easy due to the tiltable cabin as well as the diagnostic tool

* Load-independent flow distribution



Economical and powerful

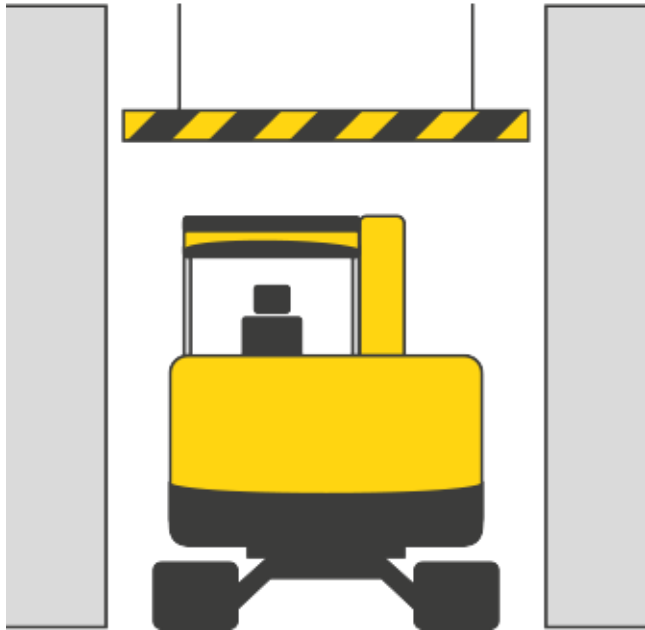
- Powerful drive system
- ECO operating mode
- Up to 20% less fuel consumption



Efficient articulated boom

- Articulated boom for greater reach, digging depth and dumping height

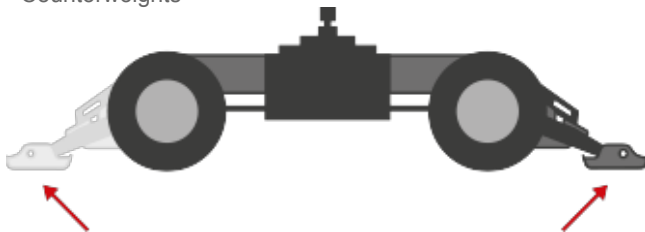
Reduced dimensions



- Significantly lower height and width than comparable competition models
- Easily master tight construction sites and low passages
- Higher level of stability due to the low center of gravity
- Easy to transport

Different stabilizer versions

- More stability due to the different stabilizer versions
- Stabilizers optionally in front or rear
- Dozer blade
- Counterweights



Cabin - sight and operating comfort



- Innovative solution for the optimal view – boom to the right next to the cabin
- Operator comfort: spacious cabin, air cushioned seat and automatic air-conditioning system
- Innovative front windshield system: two-part windshield can be slid up and moved - rain roof position
- LED headlights for optimal illumination
- Rear camera for more safety when in reverse operation



Tilttable cabin:

- for excellent service access



Jog dial system

- Technology from the automotive sector
- For the direct control of central functions
- Intuitive to operate

Technical specifications



Operating data

Shipping weight min.	6,472 kg
Operating weight min.	6,755 kg
Biting force max.	30.8 kN
Breakaway force max.	50.7 kN
Digging depth max.	3,895 mm
Dumping height max.	5,195 mm
Digging radius max.	6,877 mm
Superstructure slewing speed	9 1/min
L x W x H	6,349 x 2,088 x 2,775 mm

Engine / Motor

Engine / Motor manufacturer	Perkins
Engine / Motor type	404F-22T
Engine / Motor	water-cooled 4-cylinder turbo diesel engine
Displacement	2,216 cm ³
RPM / speed	3,000 rpm
Engine performance according to ISO	45.5 kW
Battery	88 Ah

Hydraulic system

Duty pump	Variable displacement pump and double hydraulic gear pump
Flow rate	144 l/min
Operating pressure drive pump	420 bar
Operating pressure working pump	240 bar
Hydraulic oil tank	92 l

Wheel set

Tires	mono and dual tires
Ground clearance	237 mm
Travel speed max.	30 km/h

Dozer Blade

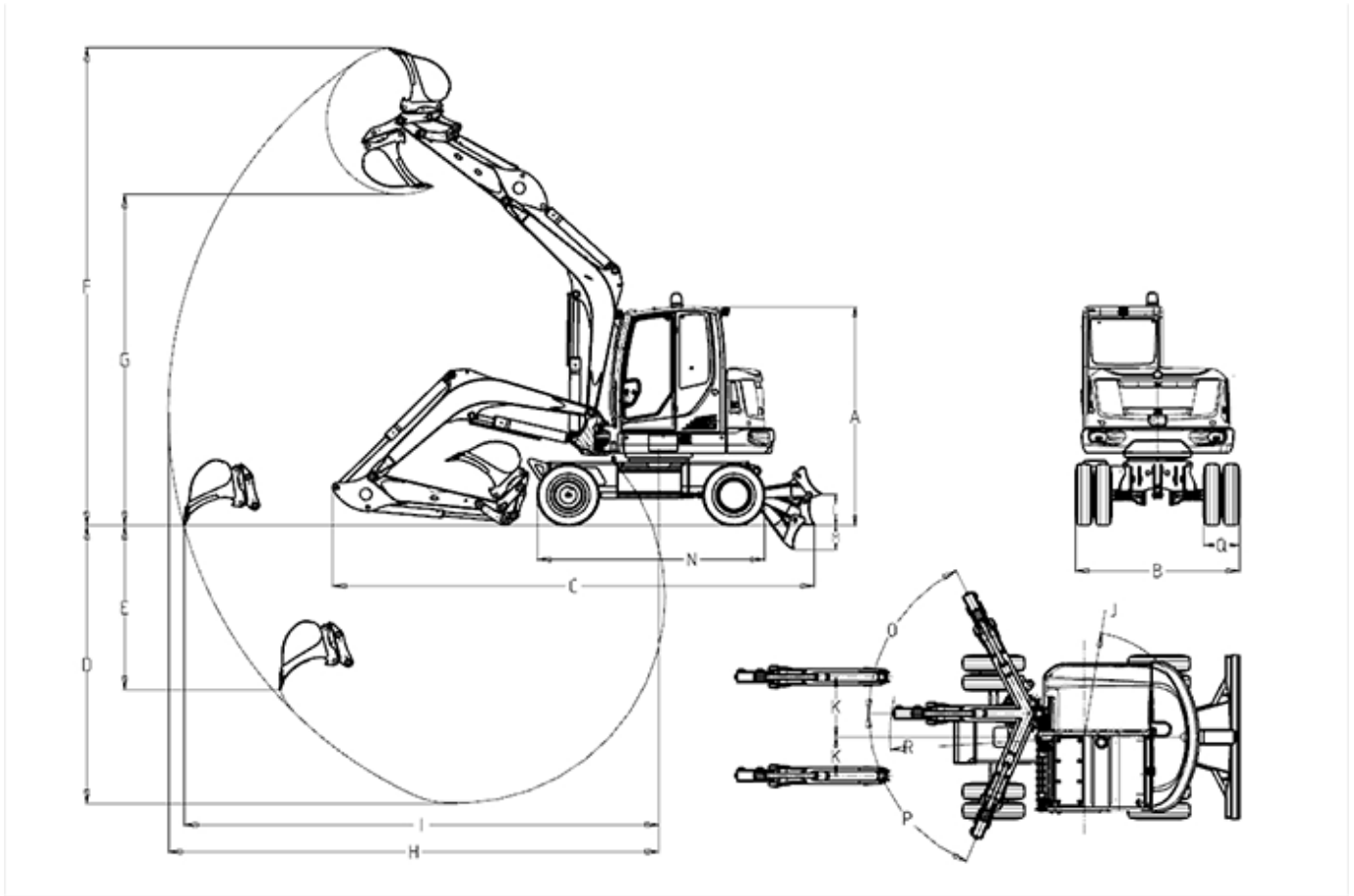
Stroke dozer blade above subgrade	395 mm
-----------------------------------	--------



Stroke dozer blade below subgrade	301 mm
Sound level	
Sound level (LwA) according to 2000/14/EC	97 dB(A)



Dimensions



	monobloc boom	articulated boom
Height mm	0	2,775
B1 Width Fahrwerk Zwillingbereifung mm	2,088	2,088
Z1 Transport length kurzer LS mm	6,114	6,220
Z2 Transport length langer LS mm	6,250	6,349
D1 Digging depth kurzer LS mm	3,531	3,596
D2 Digging depth langer LS mm	3,831	3,895
E1 Insertion depth kurzer LS mm	2,088	2,465
E2 Insertion depth langer LS mm	2,361	2,737
Insertion height kurzer LS mm	6,068	6,834
Insertion height langer LS mm	0	7,067
G1 Dumping height kurzer LS mm	4,207	4,961
G2 Dumping height langer LS mm	4,389	5,195



H1	Range am Boden (kurzer LS) mm	6,024	6,406
H2	Range am Boden (langer LS) mm	6,318	6,706
K1	Digging radius kurzer LS mm	6,220	6,590
K2	Digging radius langer LS mm	6,504	6,877
	Arm displacement auf Mitte Löffel rechts mm	766	766
	Arm displacement auf Mitte Löffel links mm	492	492
	Lift height über Planum mm	395	395
P	Scraping depth unter Planum mm	301	301
R1	Rear swivel radius mm	1,459	1,459
R2	Boom slewing radius Mitte mm	2,465	2,465
S	Length Laufwerk gesamt mm	2,887	2,887
O	Turning angle °	63	63
P	Turning angle °	67	67
	Width Fahrwerk Monobereifung mm	1,931	1,931

ds = dipper stick

Please note

that product availability can vary from country to country. It is possible that information / products may not be available in your country. More detailed information on engine power can be found in the operator's manual; the stated power may vary due to specific operating conditions.

Subject to alterations and errors excepted. Applicable also to illustrations.

Copyright © 2016 Wacker Neuson SE.