



STRONG PARTNERS. TOUGH TRUCKS.

**Counterbalanced stacker
S1.0C, S1.2C, S1.5C**



S1.0C, S1.2C, S1.5C

CHARACTERISTICS	1.1	Manufacturer	
	1.2	Model designation	
	1.3	Power: battery, diesel, LPG, electric mains	
	1.4	Operation: manual, pedestrian, stand-on, seat, order picker	
	1.5	Load capacity	Q (kg)
	1.6	Load centre	c (mm)
	1.7	Load distance	x (mm)
	1.8	Wheelbase	y (mm)

WEIGHTS	2.1	Unladen weight	kg
	2.2	Axle loading with load, front/rear	kg
	2.3	Axle loading without load, front/rear	kg

WHEELS & TYRES	3.1	Tyres: rubber, polyurethane, Vulkollan, front/rear	
	3.2	Tyre size, front	
	3.3	Tyre size, rear	
	3.5	Number of wheels, front/rear (X = driven)	
	3.7	Track width, rear	b ₁₁ (mm)

DIMENSIONS	4.1	Mast tilt, α=forward / β= backward	degrees
	4.2	Height of mast, lowered	h ₁ (mm)
	4.3	Free lift	h ₂ (mm)
	4.4	Lift height	h ₃ (mm)
	4.5	Height of mast, extended	h ₄ (mm)
	4.7	Overhead guard height	h ₆ (mm)
	4.9	Height of tiller arm in working position min./max.	h ₁₄ (mm)
	4.15	Height, forks lowered	h ₁₃ (mm)
	4.19	Overall length	l ₁ (mm)
	4.20	Length to face of forks	l ₂ (mm)
	4.21	Overall width	b ₁ /b ₂ (mm)
	4.22	Fork dimensions	s/e/l (mm)
	4.23	Fork carriage DIN 15173. Class, A/B	II A
	4.24	Fork carriage width	b ₃ (mm)
	4.25	Maximum width across forks	b ₅ (mm)
4.31	Ground clearance under mast, with load	m ₁ (mm)	
4.32	Ground clearance, centre of wheelbase	m ₂ (mm)	
4.33	Aisle width with pallets 1 000 mm x 1 200 mm wide	Ast (mm)	
4.34	Aisle width with pallets 800 mm x 1 200 mm long	Ast (mm)	
4.35	Turning radius	Wa (mm)	

PERFORMANCE	5.1	Travel speed with/without load	km/h
	5.2	Lifting speed with/without load	m/sec
	5.3	Lowering speed with/without load	m/sec
	5.8	Max. gradeability with/without load	%
	5.10	Service brake: electric, electro magnetic, hydraulic	

POWER UNIT	6.1	Drive motor, S2 60 minute rating	kW
	6.2	Lift motor, S3 10 % rating	kW
	6.3	Battery according to DIN 43531/35/36 A,B,C, no	
	6.4	Battery voltage/capacity at 5 hour rate	V/Ah
	6.5	Battery weight (+/- 5%)	kg
	6.6	Energy consumption according to VDI cycle	Kwh/h
		Vibrations according to EN 13059	m/sec ²

OTHER	8.1	Drive control	
	8.4	Average noise level according to EN 12053	dB (A)

HYSTER		HYSTER	
S1.0C		S1.0C	
Battery		Battery	
Pedestrian		Stand-on	
1 000		1 000	
500		500	
211		211	
1 300		1 300	

2 180		2 210	
2 660	520	2 680	530
1 175	1 005	1 195	1 015

Vulkollan/Vulkollan		Vulkollan/Vulkollan	
Ø 254 x 125		Ø 254 x 125	
Ø 200 x 100		Ø 200 x 100	
1X	2	1X	2
839		839	

2	-4	2	-4
See table		See table	
See table		See table	
See table		See table	
See table		See table	
-		See table	
1 180	1 530	1 220	1 570
35		35	
2 742		2 742	
1 742		1 742	
788	939	788	939
35	100	1 000	35
2 / A		2 / A	
700		700	
240	672	240	672
59		59	
76		76	
3 111		3 111	
3 227		3 227	
1 560		1 560	

4,8	5	5,5	6
0,26	0,28	0,26	0,28
0,20	0,34	0,20	0,34
11	11	11	11
Electric	Electro magnetic	Electric	Electro magnetic

4		4	
3		3	
No		No	
24	300◆	24	300◆
260		260	
1,46		2,61	
<2,5		4,3	

AC - Mosfet		AC - Mosfet	
< 70		< 70	

Specification Data is based on VDI 2198

Equipment and weight:

Weights (line 2.1) are based on the following specifications:

S1.0C:	Mast	2 972 mm
S1.2C:	Mast	2 972 mm
S1.5C:	Mast	2 972 mm

S1.0C, S1.2C, S1.5C

HYSTER		HYSTER		HYSTER		
S1.2C		S1.2C		S1.5C		1.1
Battery		Battery		Battery		1.2
Pedestrian		Stand-on		Pedestrian		1.3
1 200		1 200		1 500		1.4
500		500		500		1.5
211		211		211		1.6
1 450		1 450		1 600		1.7
						1.8

CHARACTERISTICS

2 280		2 310		2 360		2.1
2 935	545	2 955	555	3 345	515	2.2
1 285	985	1 315	995	1 420	940	2.3

WEIGHTS

Vulkollan/Vulkollan		Vulkollan/Vulkollan		Vulkollan/Vulkollan		3.1
Ø 254 x 125		Ø 254 x 125		Ø 254 x 125		3.2
Ø 200 x 100		Ø 200 x 100		Ø 200 x 100		3.3
1X	2	1X	2	1X	2	3.5
839		839		839		3.7

WHEELS & TYRES

2	-4	2	-4	2	-4	4.1
See table		See table		See table		4.2
See table		See table		See table		4.3
See table		See table		See table		4.4
See table		See table		See table		4.5
-		See table		-		4.7
1 180	1 530	1 220	1 570	1 180	1 530	4.9
35		35		35		4.15
2 892		2 892		3 042		4.19
1 892		1 892		2 042		4.20
788	939	788	939	788	939	4.21
35	100	1 000	35	100	1 000	4.22
2 / A		2 / A		2 / A		4.23
700		700		700		4.24
240	672	240	672	240	672	4.25
59		59		59		4.31
76		76		76		4.32
3 258		3 258		3 406		4.33
3 374		3 374		3 522		4.34
1 707		1 707		1 855		4.35

DIMENSIONS

4,8	5	5,5	6	4,8	5	5.1
0,20	0,28	0,20	0,28	0,18	0,28	5.2
0,20	0,34	0,20	0,34	0,20	0,34	5.3
10	10	10	10	9	9	5.8
Electric	Electro magnetic	Electric	Electro magnetic	Electric	Electro magnetic	5.10

PERFORMANCE

4		4		4		6.1
3		3		3		6.2
No		No		No		6.3
24	400	24	400	24	400	6.4
330		330		330		6.5
1,88		3,25		2,29		6.6
<2,5		4,3		<2,5		

POWER UNIT

AC - Mosfet		AC - Mosfet		AC - Mosfet		8.1
< 70		< 70		< 70		8.4

OTHER

Forks:

S1.0C: 35 x 100 x 1 000 mm long
 S1.2C: 35 x 100 x 1 000 mm long
 S1.5C: 35 x 100 x 1 000 mm long

Fork spacing:

Inside to inside: 240 mm
 Outside to outside: 672 mm

Mast and capacity information

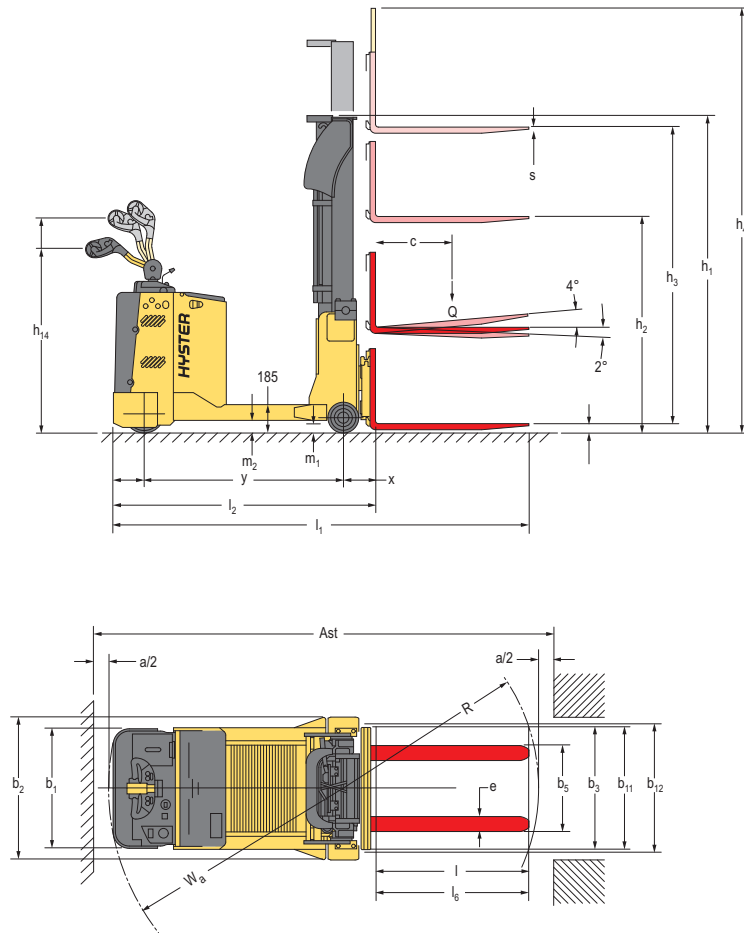
Values shown are for standard equipment. When using non-standard equipment, these values may change. Please contact your Hyster dealer for information.

S1.0C-S1.5C

	Lift height mm (h_3)	Maximum fork height mm ($h_3 + h_{13}$)	Overall lowered height mm (h_1) ■	Overall extended height mm (h_4)	Free lift mm (h_2)
2-Stage	2 972	3 007	2 075	3 547	100
	3 372	3 407	2 275	4 147	100
	3 672	3 707	2 425	4 597	100
	4 072	4 107	2 625	5 197	100
3-Stage full free lift	4 626	4 661	2 125	5 201	1 555
	5 076	5 111	2 275	5 651	1 705

The rated capacities shown are for masts in a vertical position on trucks equipped with standard or sideshift carriage, and nominal length forks. Masts above the maximum fork heights shown in the mast table are classified as high lift, and depending on the tyre/tread configuration may require reduced capacity, restricted back tilt or wide tread.

Pedestrian model - truck dimensions



$$Ast = W_a + R + a \text{ (see lines 4.33 \& 4.34)}$$

$$R = \sqrt{(l_6 + x)^2 + \left(\frac{b_{12}}{2}\right)^2}$$

a = 200 mm

l₆ = Load length

NOTE:

Specifications are affected by the condition of the vehicle and how it is equipped, as well as the nature and condition of the operating area. If these specifications are critical, the proposed application should be discussed with your dealer.

- ¶ Bottom of forks
- ◆ Battery 400 Ah is available

Mast tables:

- With 150 mm free lift

Notice

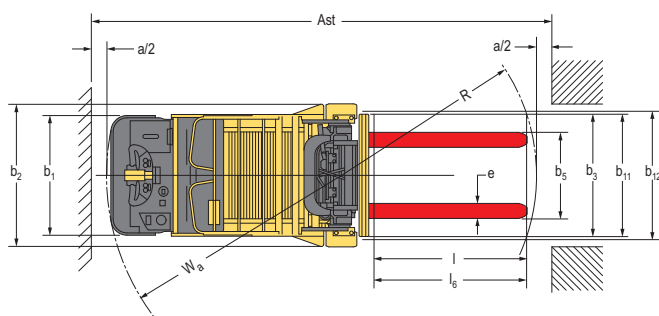
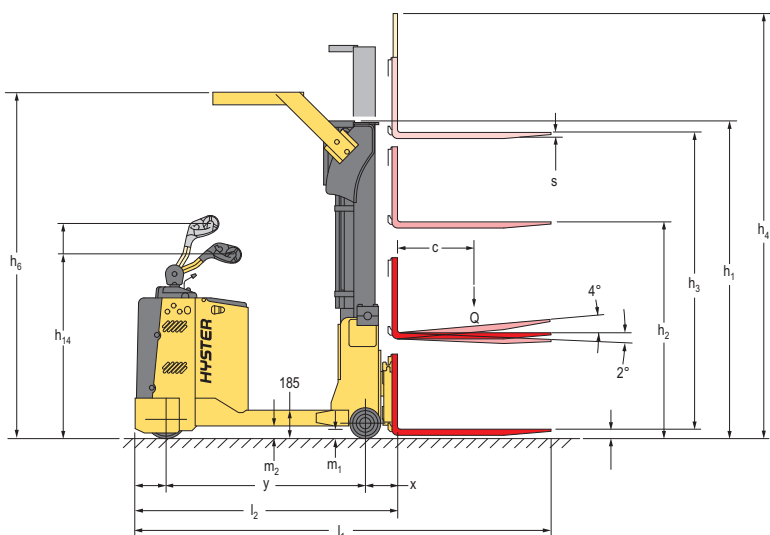
Care must be exercised when handling elevated loads. When the carriage and/or load is elevated, truck stability is reduced. Operators must be trained and adhere to the instructions contained in the Operating Manual.

Hyster products are subject to change without notice. Lift trucks illustrated may feature optional equipment.



This truck conforms to the current EU requirements.

Stand-on model - truck dimensions (Only on the models S1.0C and S1.2)



$$Ast = W_a + R + a \text{ (see lines 4.33 \& 4.34)}$$

$$R = \sqrt{(l_6 + x)^2 + \left(\frac{b_{12}}{2}\right)^2}$$

$a = 200 \text{ mm}$

$l_6 = \text{Load length}$

NOTE:

Specifications are affected by the condition of the vehicle and how it is equipped, as well as the nature and condition of the operating area. If these specifications are critical, the proposed application should be discussed with your dealer.

- ¶ Bottom of forks
- ◆ Battery 400 Ah is available

Mast tables:

- With 150 mm free lift

Notice

Care must be exercised when handling elevated loads. When the carriage and/or load is elevated, truck stability is reduced. Operators must be trained and adhere to the instructions contained in the Operating Manual.

Hyster products are subject to change without notice. Lift trucks illustrated may feature optional equipment.



This truck conforms to the current EU requirements.

Product Features

Dependability

- Tough counterbalance performance.
- Comprehensive selection of mast configurations.
- Specific options available to ensure trucks meet exact operation requirements, e.g. load back rest, FEM forks and carriages.
- CANbus electronics reduce wiring complexity, for increased reliability.
- Integral sideshift allows optimum fork positioning for all applications.

Productivity

- Operator-friendly tiller head controls for improved load handling.
- Power steering available for both pedestrian and stand-on operation.
- Compact chassis design improves handling in confined spaces.
- Automatic braking on release of the movement controls.
- Regenerative braking and anti-roll back as standard.
- Adjustable performance settings to suit specific operating conditions.

Ergonomics

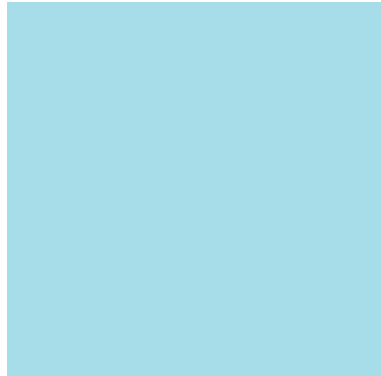
- Tiller head ergonomically designed for maximum operator comfort.
- Controls positioned to allow operation with either hand.
- EPAS (Electronic Power Assistance Steering) system provides optimum directional control at any speed.
- Software speed reduction on cornering.
- On/off auxiliary functions for tilt and side shift.
- Vertically mounted lifting motor with dampers to reduce noise and vibration.

Cost of ownership

- Powerful AC traction motor provides superior performance and increased load moves per hour.
- Increased load moves per hour reduces operating costs.
- Traction and hydraulics managed through MOSFET high frequency Combi controller.
- Intelligent management system optimises energy usage.
- Key-pad access allows greater management control.

Serviceability

- Diagnostic indicators for early warning of maintenance requirements.
- Built in diagnostic system allows preventive maintenance communications, increasing uptime.
- Updated components permit extended service intervals.
- Driver Diagnostic Interface (DDI) informs operator in real-time about truck conditions.
- Hour meter and battery discharge indicator with lift interrupt fitted as standard.



**Strong Partners, Tough Trucks,
for Demanding Operations Everywhere.**

Hyster supplies a complete product range, including Warehouse trucks, IC and Electric Counterbalanced trucks, Container Handlers and Reach Stackers.

Hyster is committed to being much more than a lift truck supplier. Our aim is to offer a complete partnership capable of responding to the full spectrum of materials handling issues:

Whether you need professional consultancy on your fleet management, fully qualified service support, or reliable parts supply, you can depend on Hyster.

Our network of highly trained dealers provides expert, responsive local support. They can offer cost-effective finance packages and introduce effectively managed maintenance programmes to ensure that you get the best possible value. Our business is dealing with your materials handling needs so you can focus on the success of your business today and in the future.



Hyster Europe, Flagship House, Reading Road North, Fleet, Hants GU51 4WD, England.

Tel: +44 (0) 1252 810261

Fax: +44 (0) 1252 770702

Email: infoeurope@hyster.com

Website: www.hyster.com/europe

A division of NACCO Materials Handling Limited.

Hyster®, **HYSTER**®, Vista® and Monotrol® are registered trademarks of Hyster Company in the United States and in certain other countries. Fortens™, Pacesetter VSM™, DuraMatch™, DuraMatch Plus™, TouchPoint™, TouchControl™, EZXchange & HSM™ are trademarks of Hyster Company in the United States and in certain other countries.

